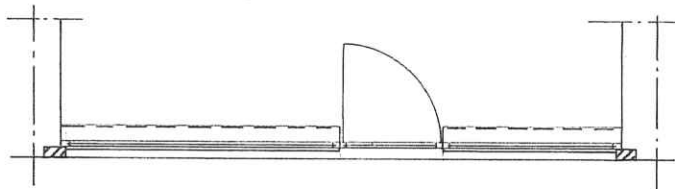


FACADE EXISTANTE



23/06/1998



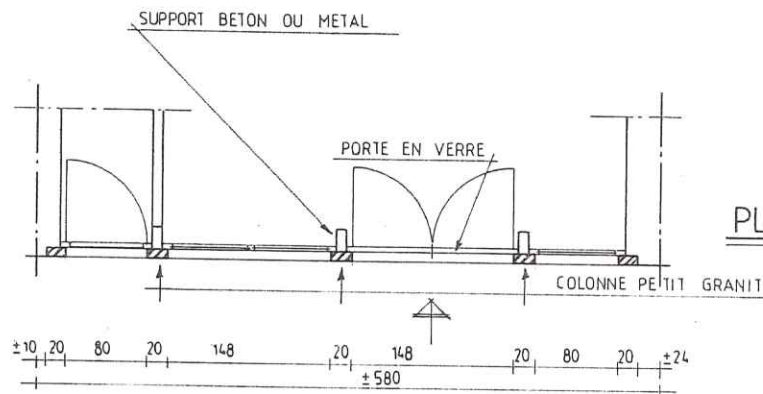
OBJET DE LA DEMANDE

Menuiserie PVC ou ALU à double vitrage thermique 400 mm pour

+0
+2.15
+2.45

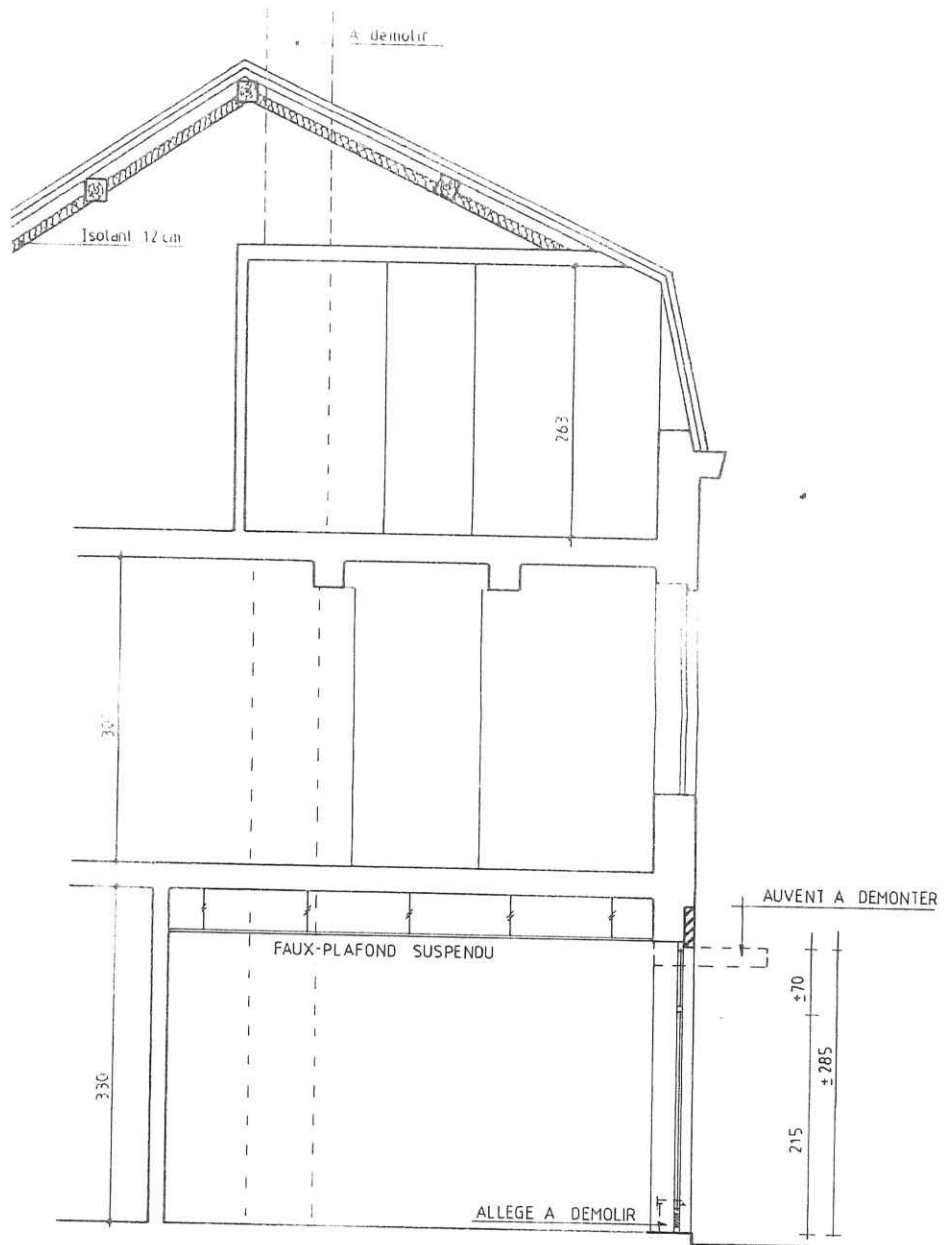
VENTILATION

FACADE PROJETEE



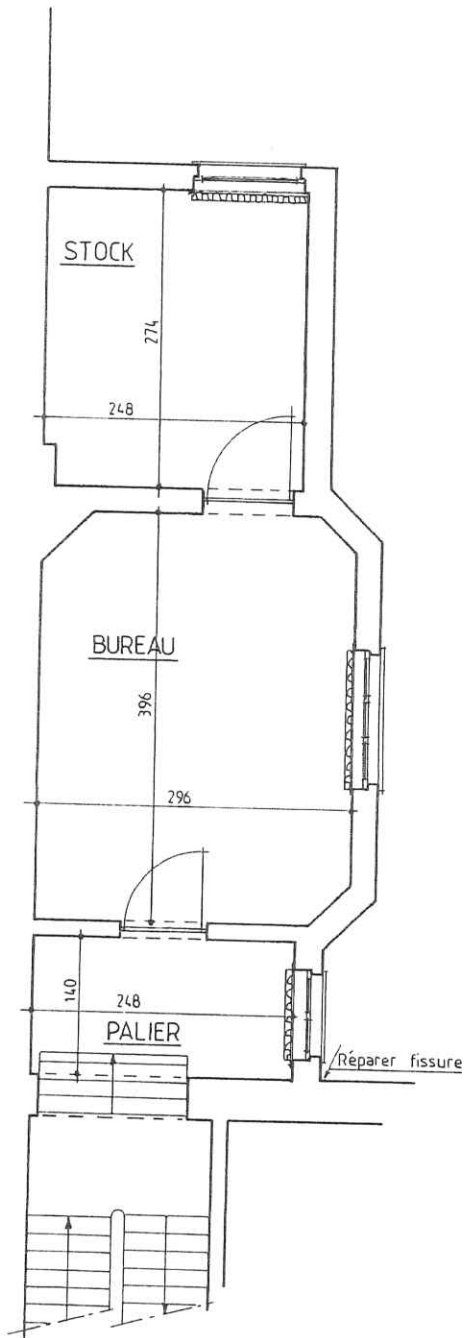
PLAN REZ

D'après : ...
 22/06/1998
 ...



COUPE

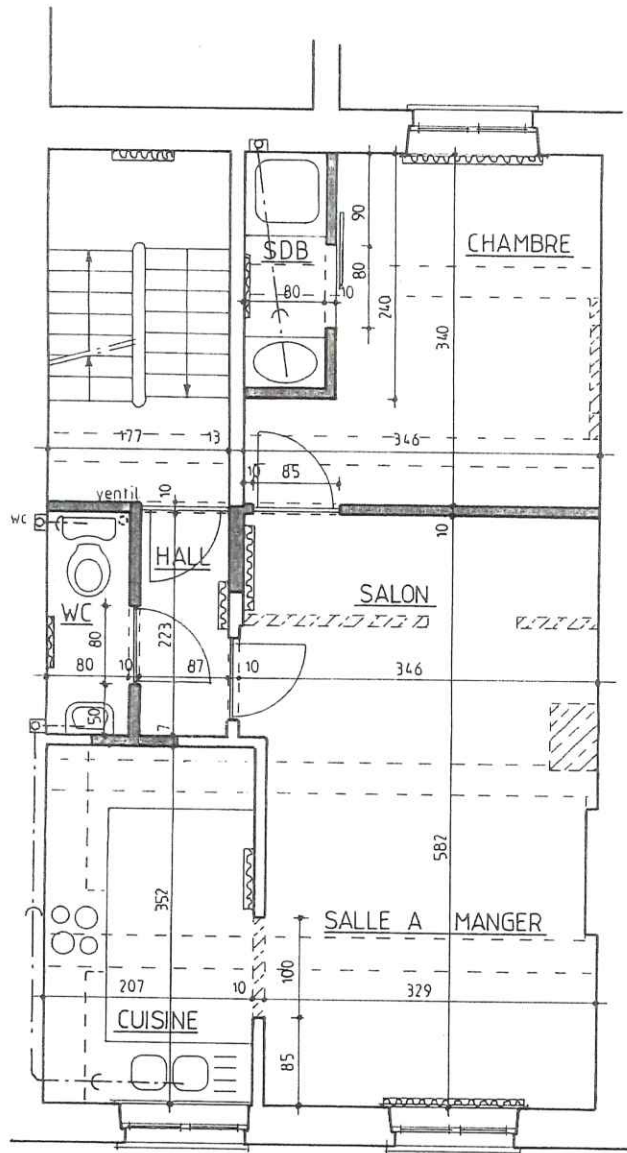
8651/90/88



TOUTES NOUVELLES CLOISONS
 EN STRUCTURE BOIS OU METALSTUD
 AVEC ISOLANT.
 REVETEMENT RF EN VIGUEUR

ETAGE INTERMEDIAIRE: BUREAU

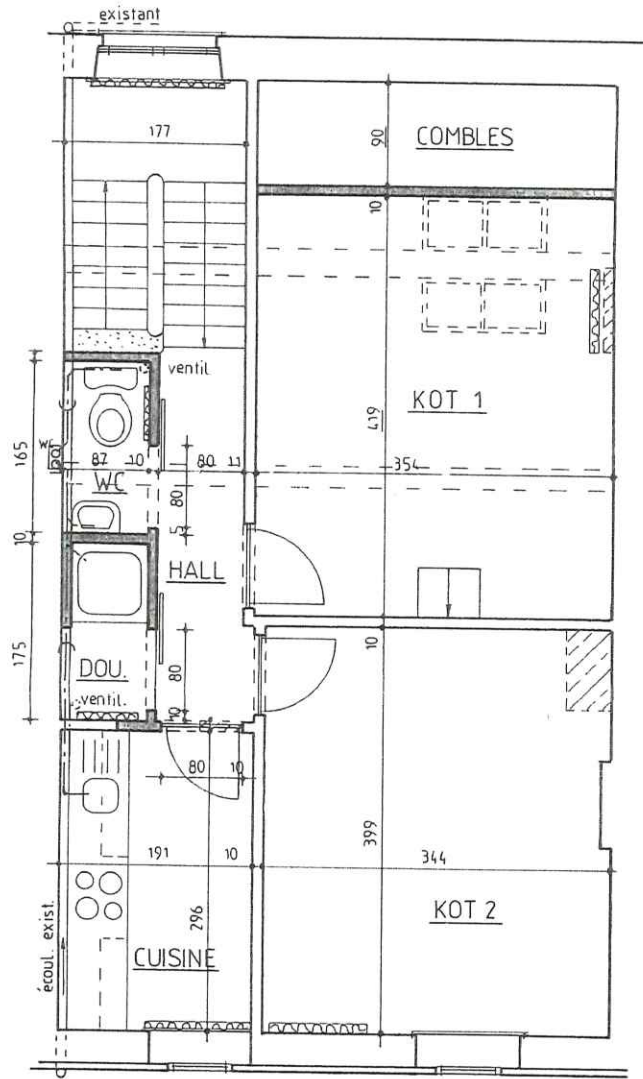
8551/06/1998



EVAC VERS RESEAU DU R.D.C.
(EXISTANT)

ETAGE 1: APPARTEMENT

22/06/1998



ETAGE 2: 2 KOTS

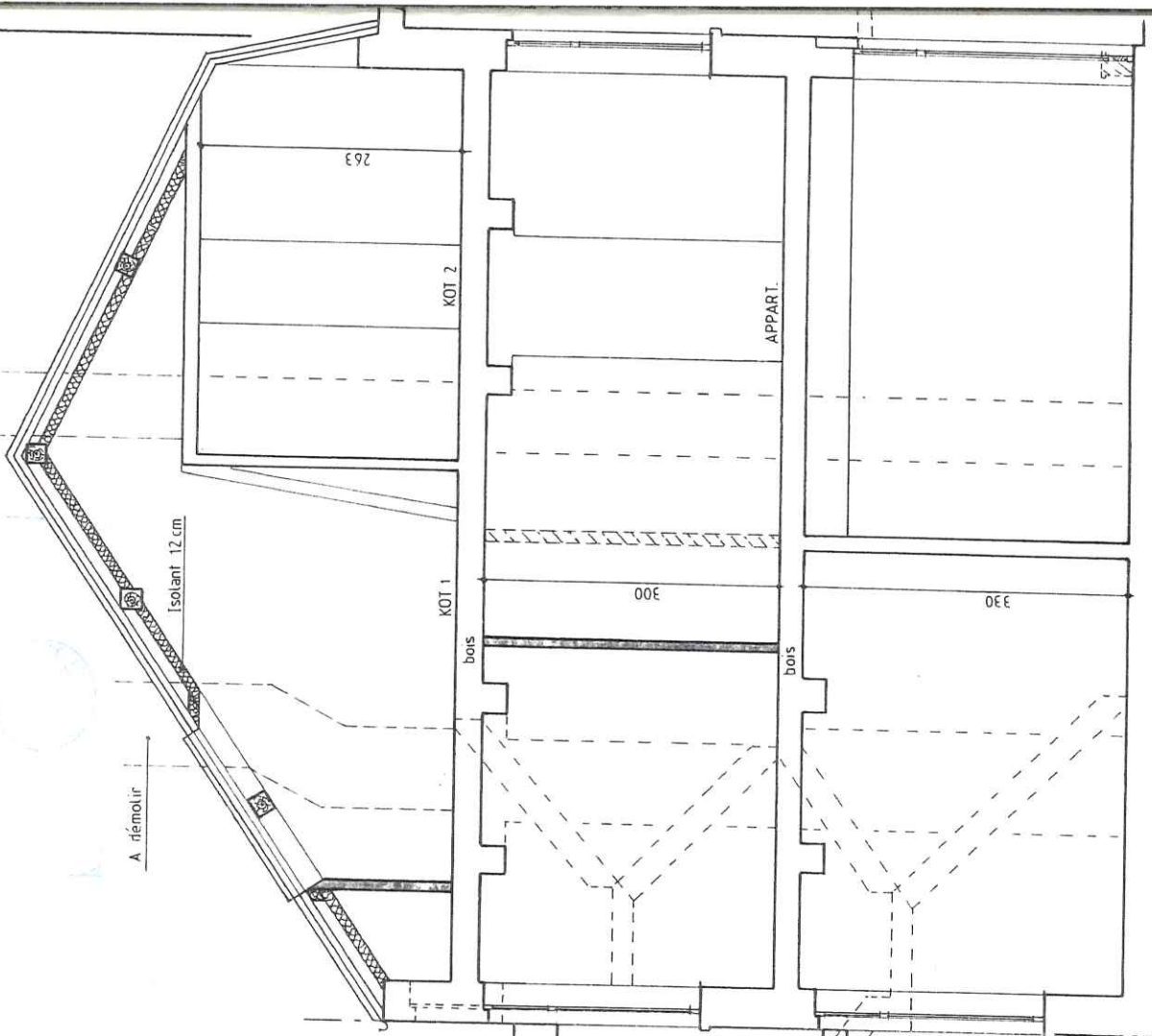
22/06/2028

82/06/1998

A démotir

A démotir

Isolant 12 cm



263

KOT 2

APPART.

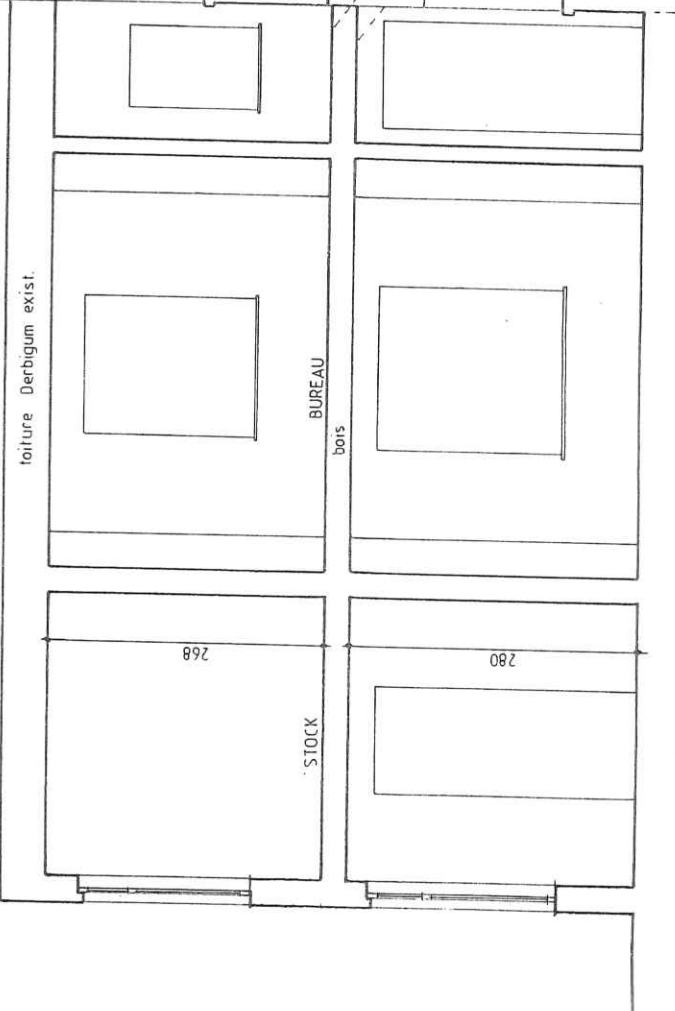
KOT 1

00E

00E

bois

bois



toiture Derbigum exist.

BUREAU

STOCK

bois

268

280