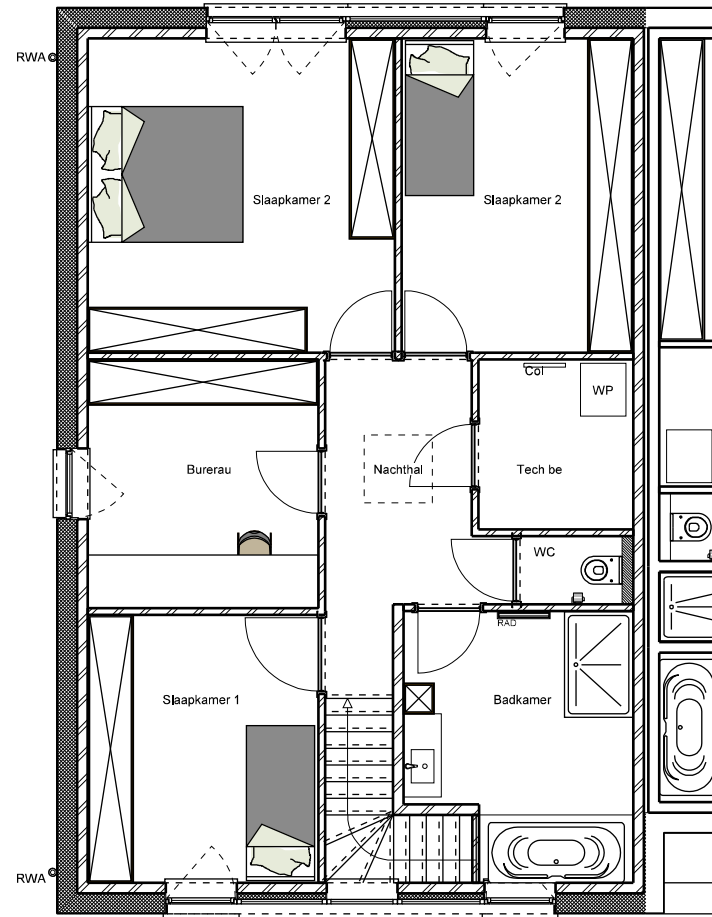
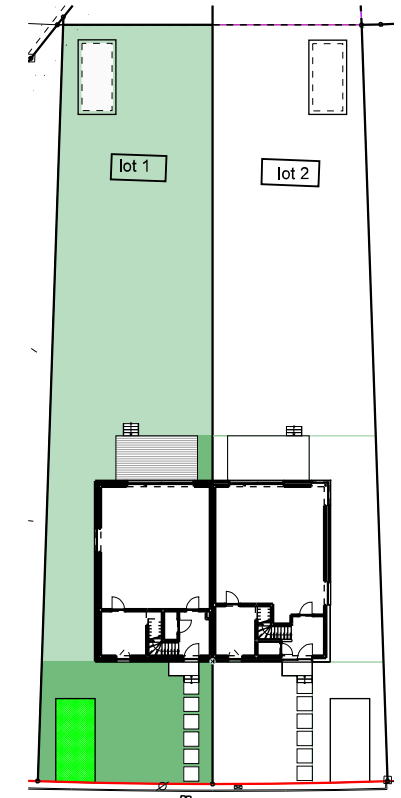


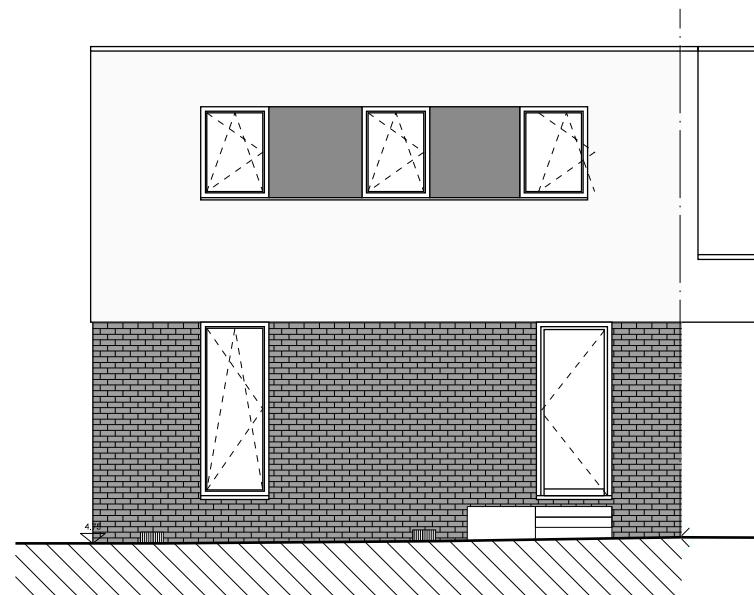
Begane grond



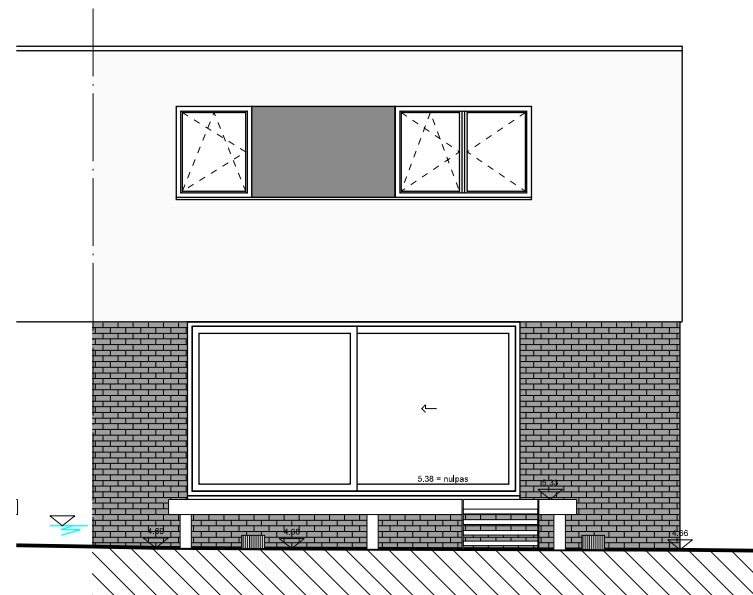
Verdieping



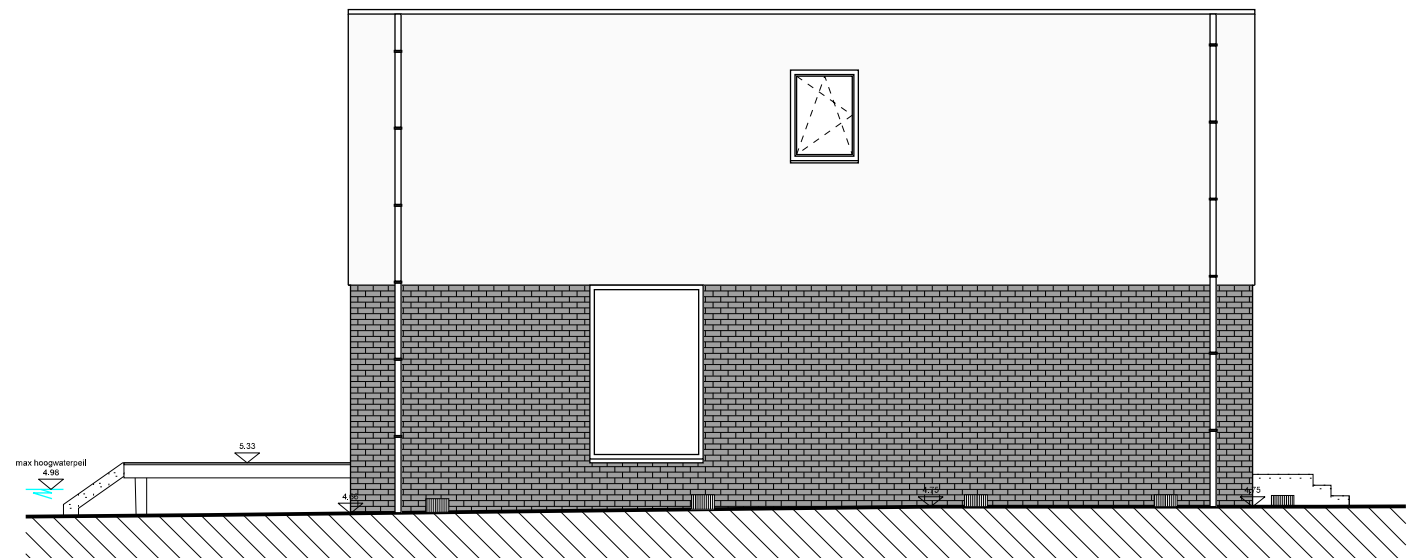
Inplanting



Voorgevel



Achtergevel



Zijgevel

Design & Projects Architects bvba
Baeckelmansstraat 41
2830 Tiselt (Willebroek)

architectenbureau
designsprojects

PROJECT

RDS construct
Bouwen van 2 woningen
Lichterstraat - Puurs-Sint-Amands

Schaal: 1/100

LOT 1
PLAN 1/1
VERSIE A

DATUM 16/06/2025

RDS
CONSTRUCT

Oppervlakte: Begane grond 80.72 m²
Verdieping +1 77.52 m²

Vermelde oppervlakte is incl. binnenmuren

