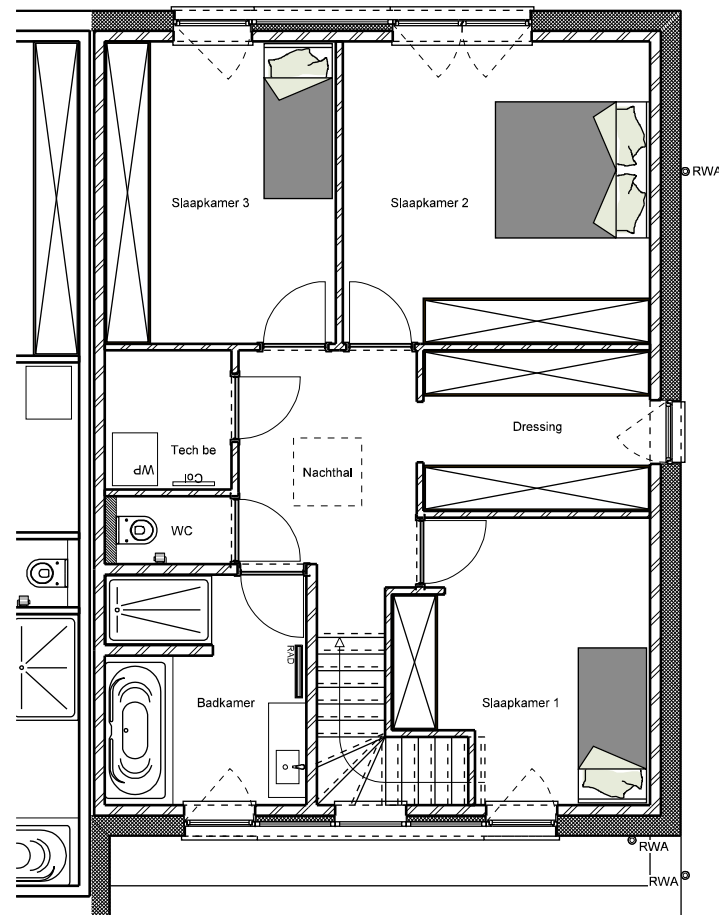
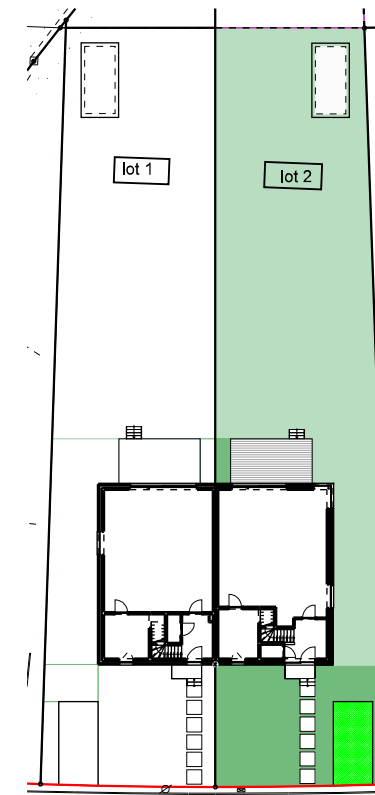


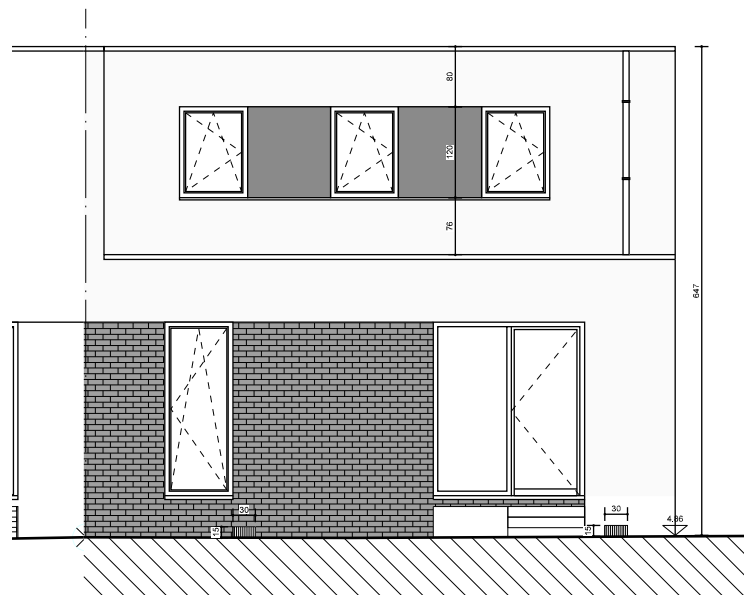
Begane grond



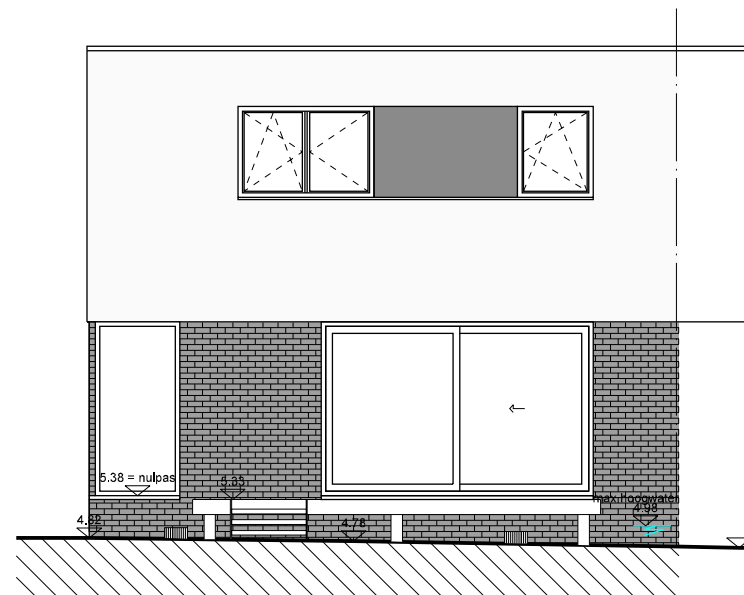
Verdieping



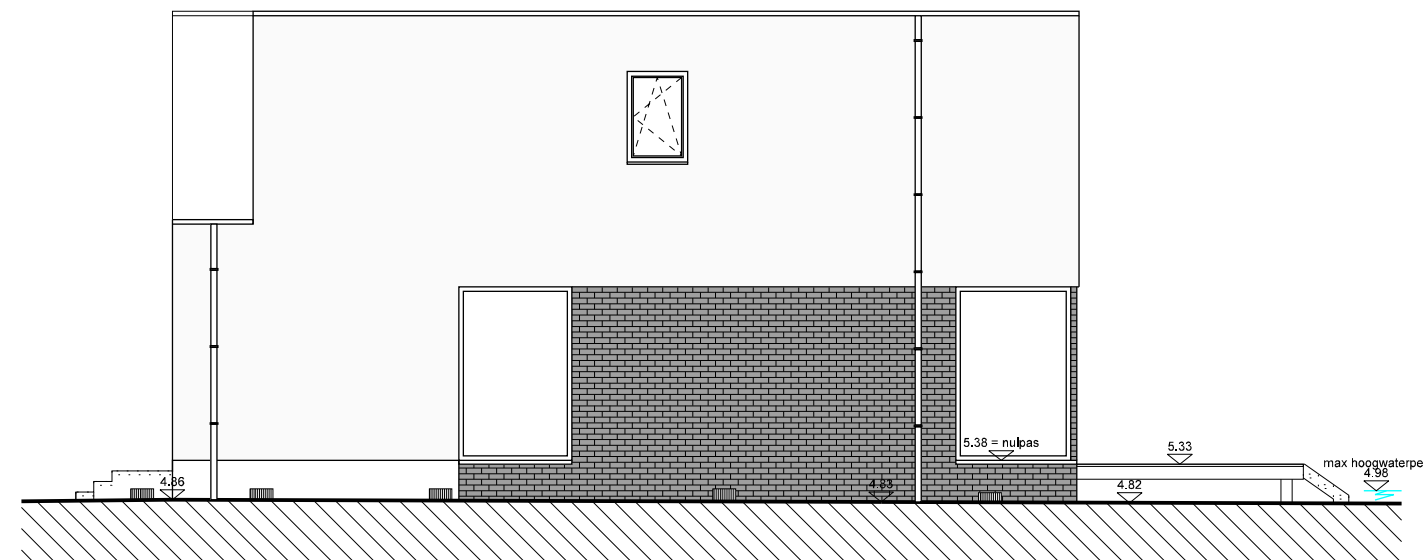
Inplanting



Voorgevel



Achtergevel



Zijgevel

Design & Projects Architects bvba  
Baeckelmansstraat 41  
2830 Tiselt (Willebroek)

architectenbureau  
design & projects

PROJECT

RDS construct  
Bouwen van 2 woningen  
Lichterstraat - Puurs-Sint-Amands

Schaal: 1/100

LOT 2  
PLAN 1/1  
VERSIE A

DATUM 16/06/2025

**RDS**  
CONSTRUCT

Oppervlakte: Begane grond 80.72 m<sup>2</sup>  
Verdieping +1 70,00 m<sup>2</sup>

Vermelde oppervlakte is incl. binnenmuren

