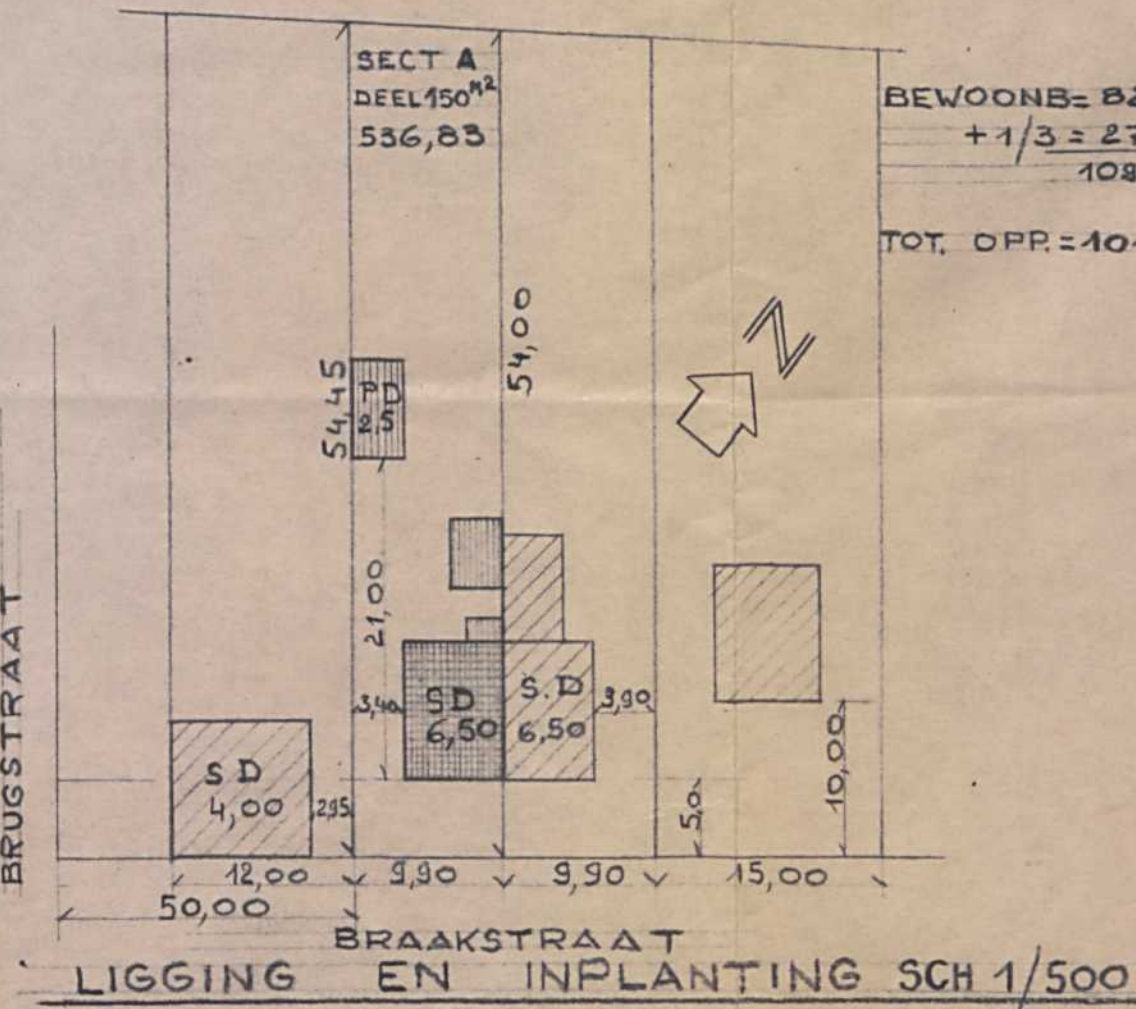
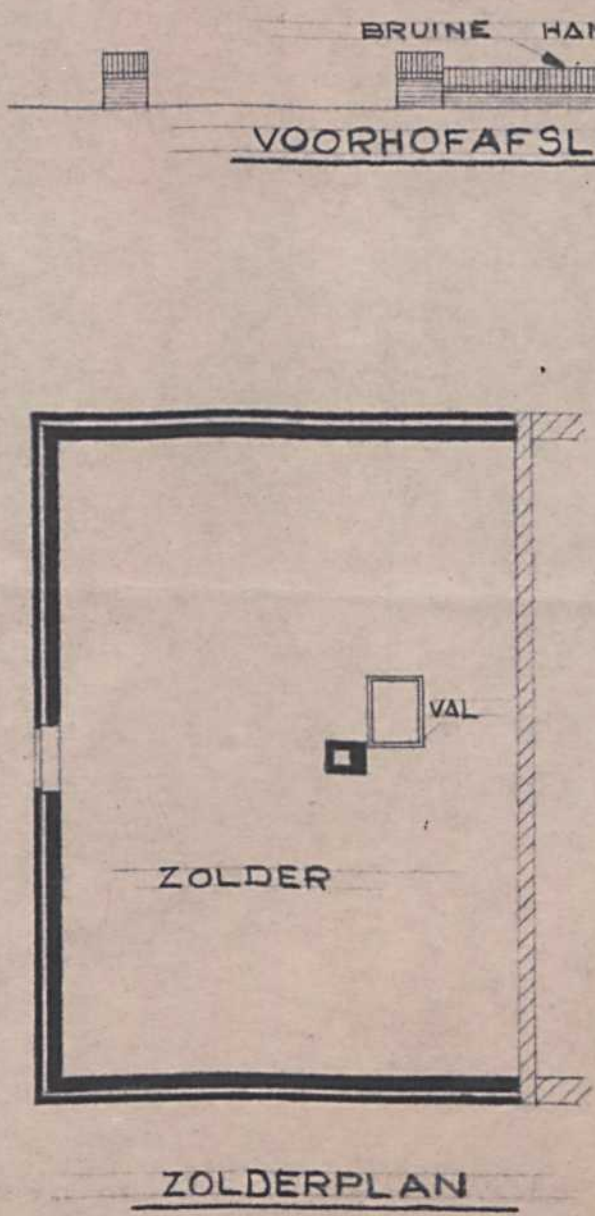
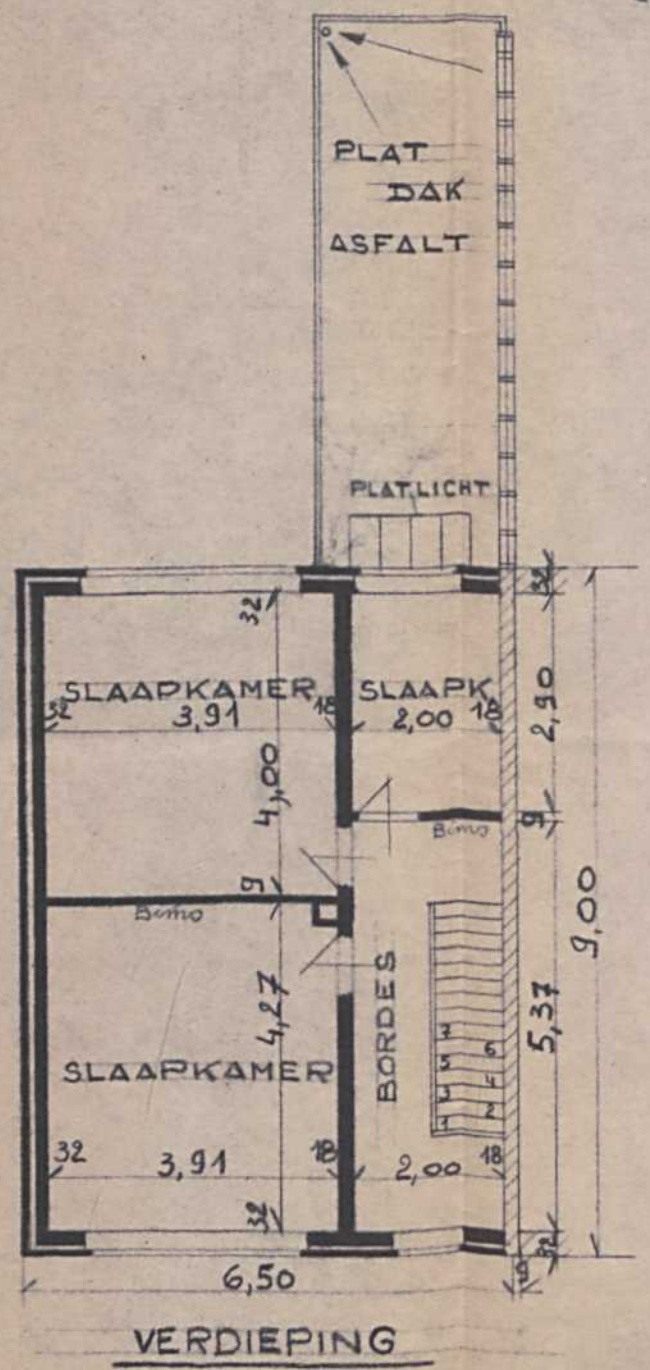
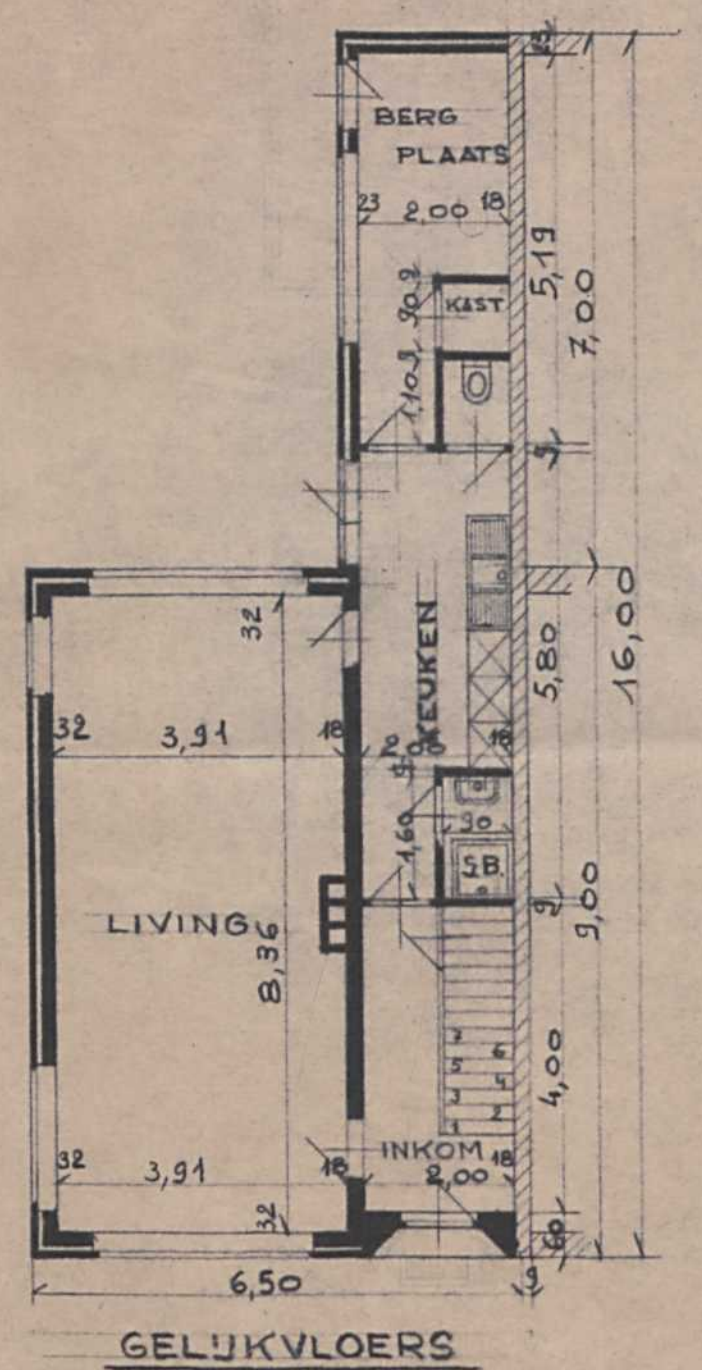
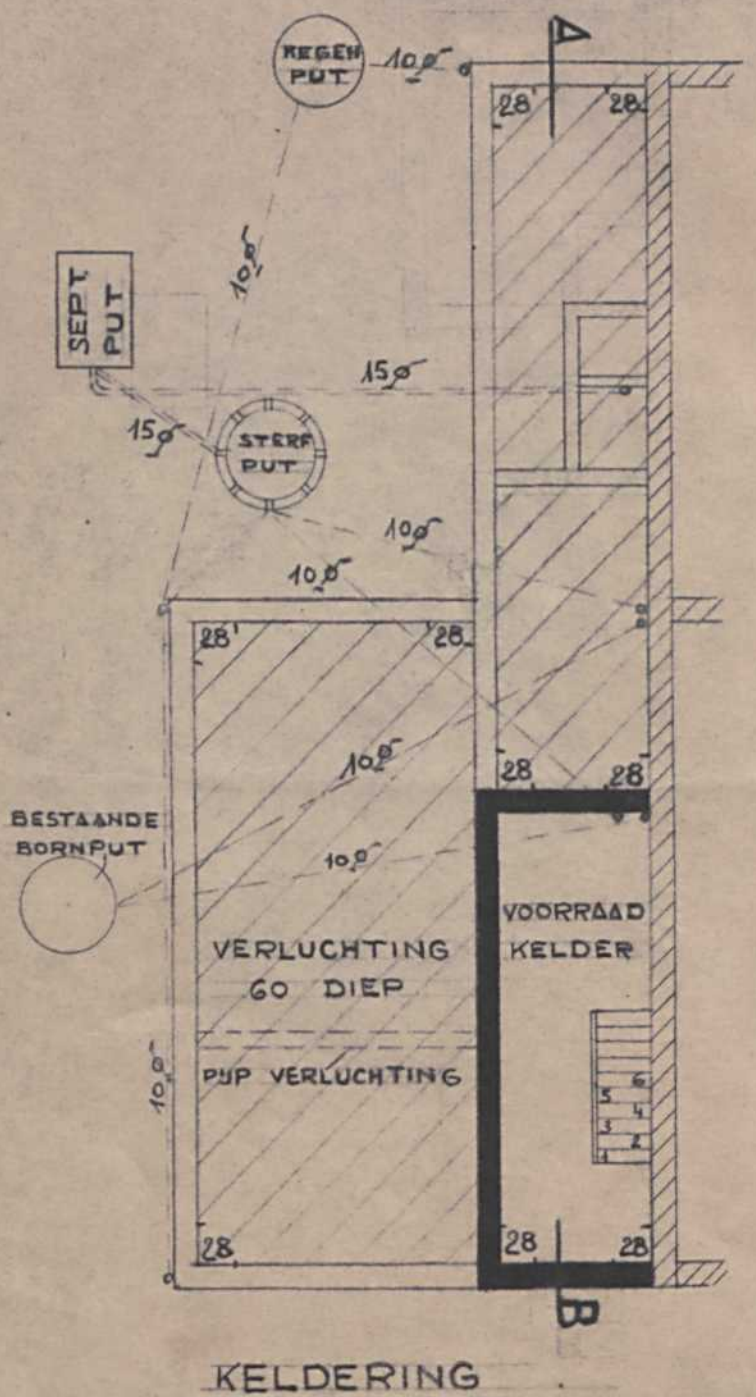
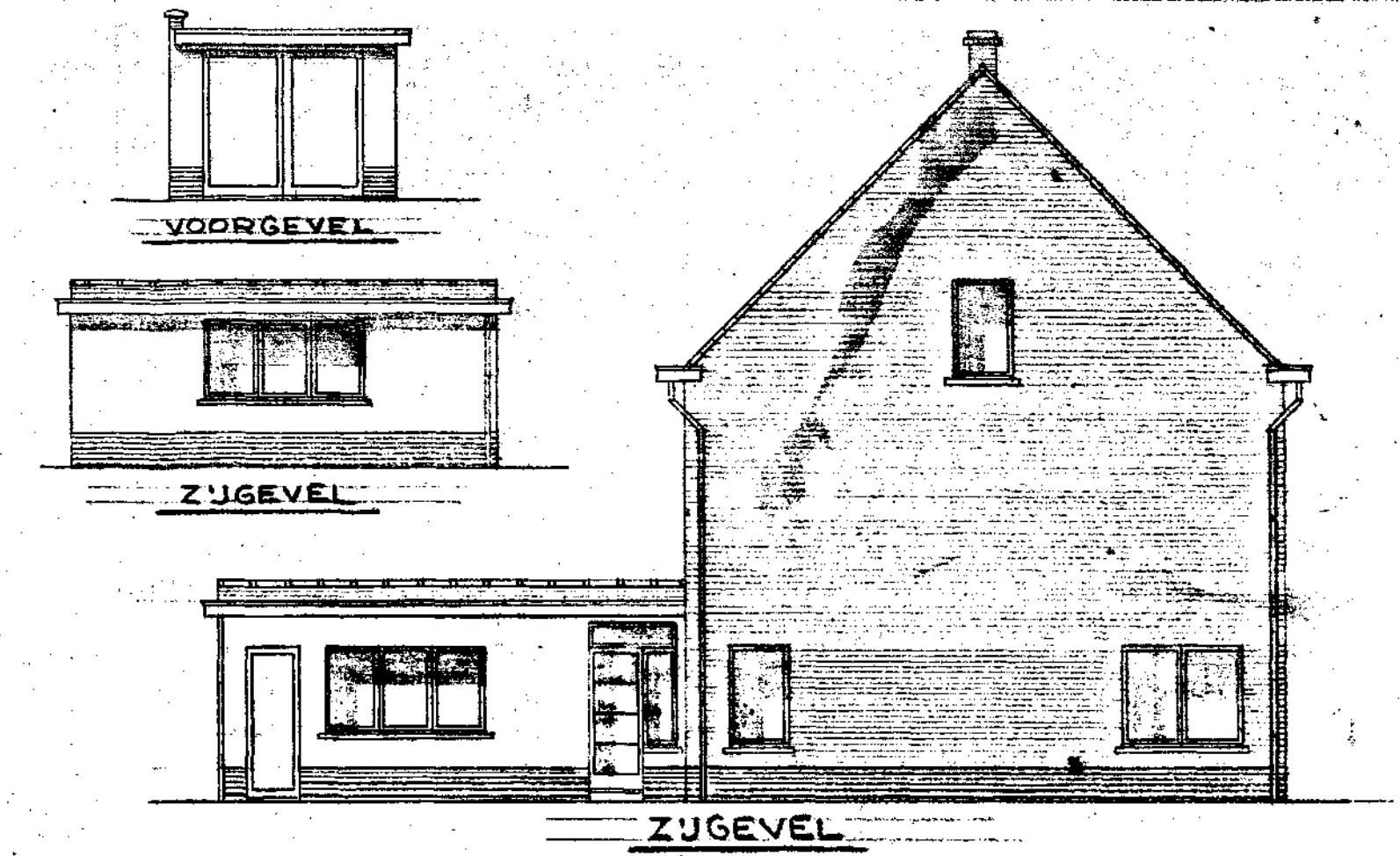
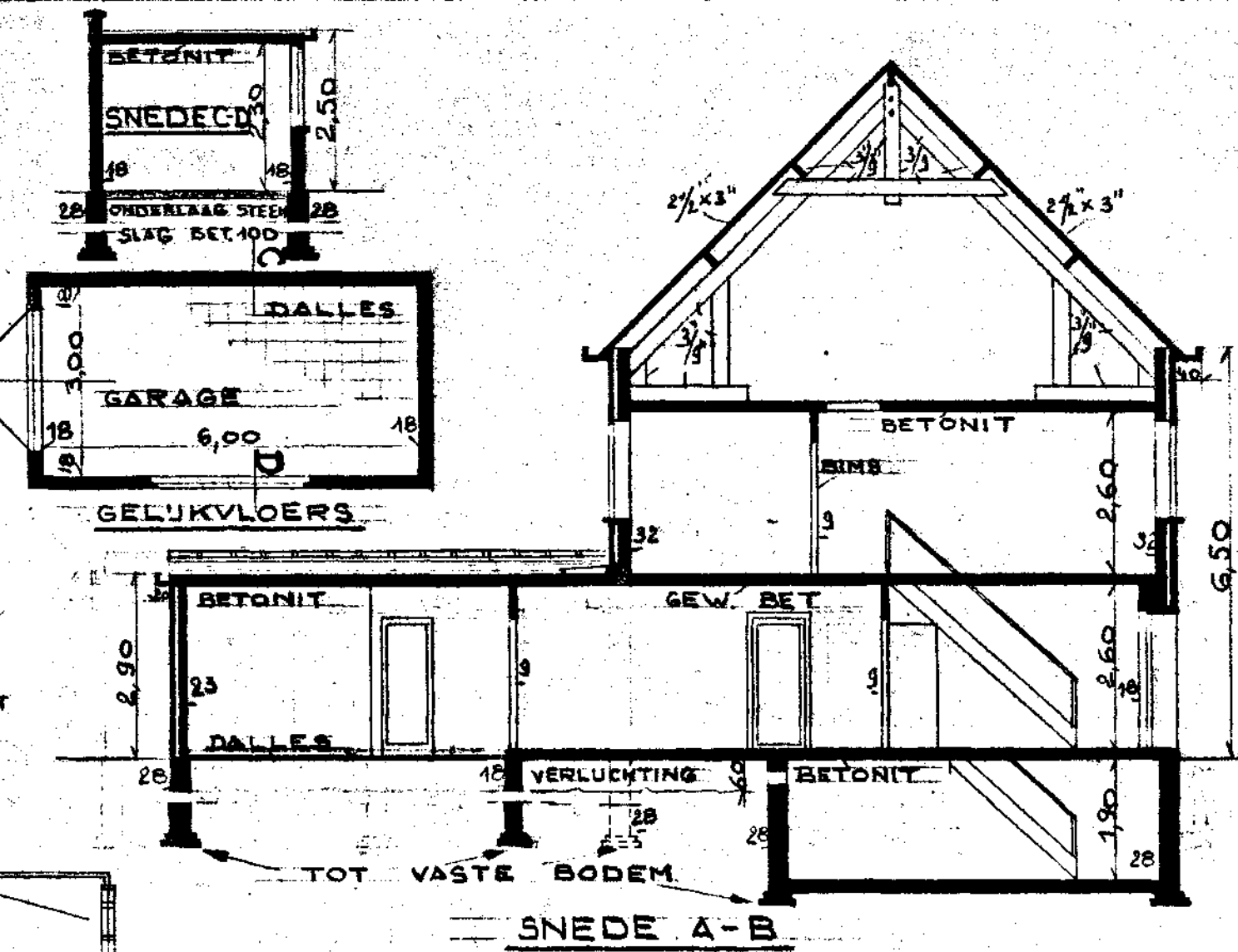
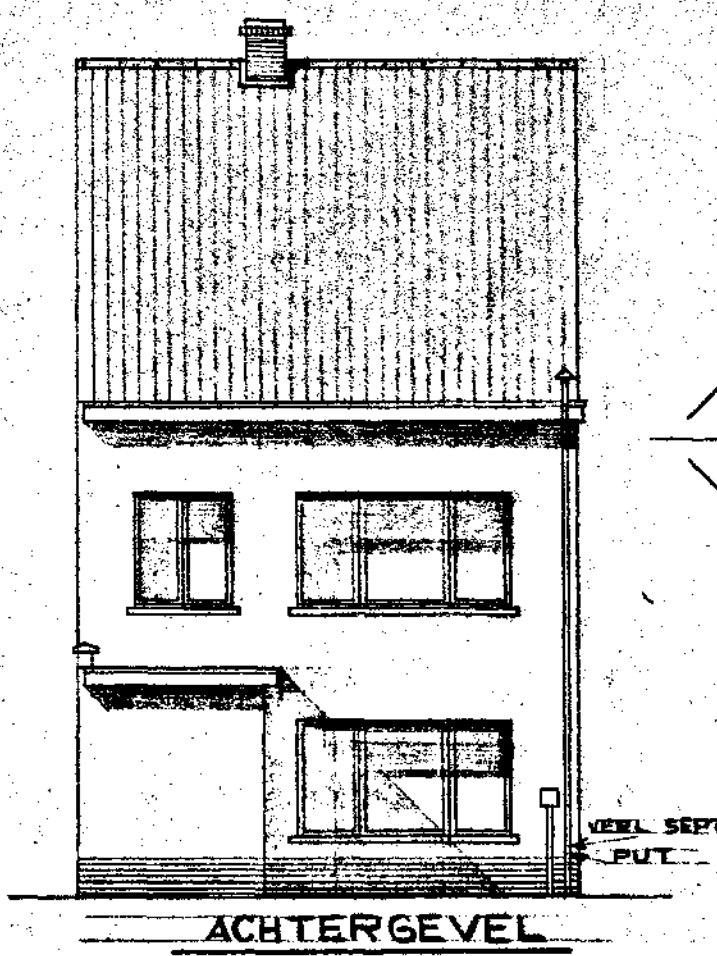
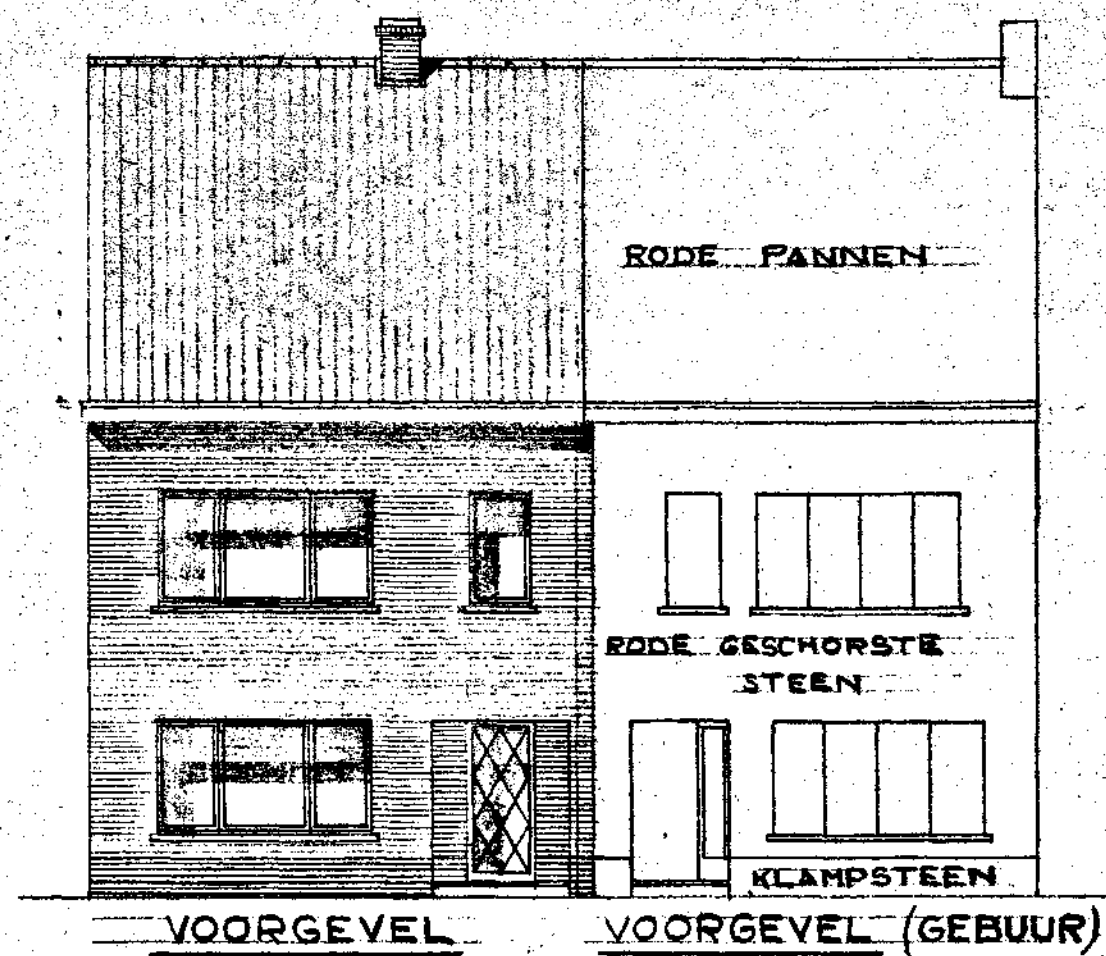


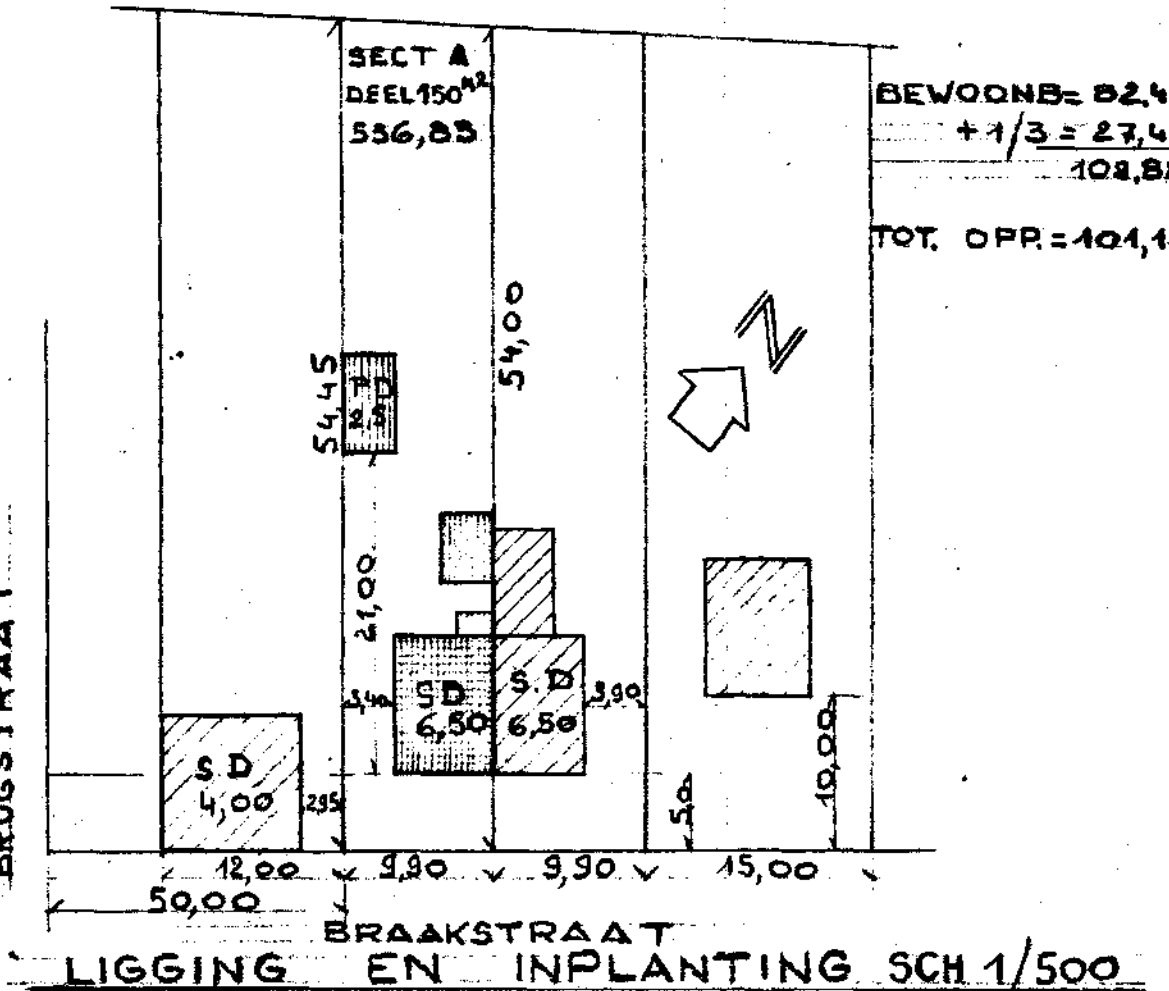
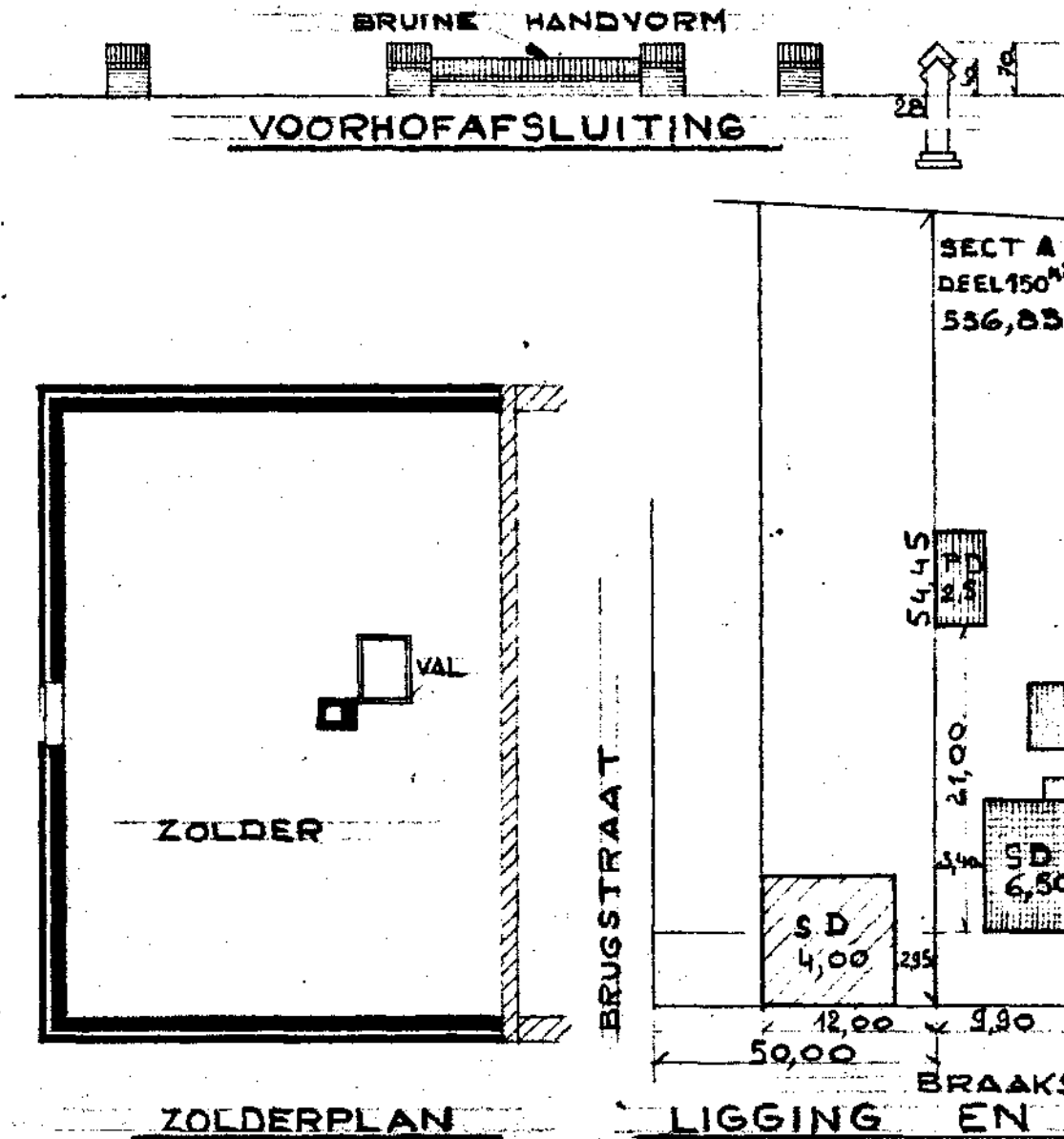
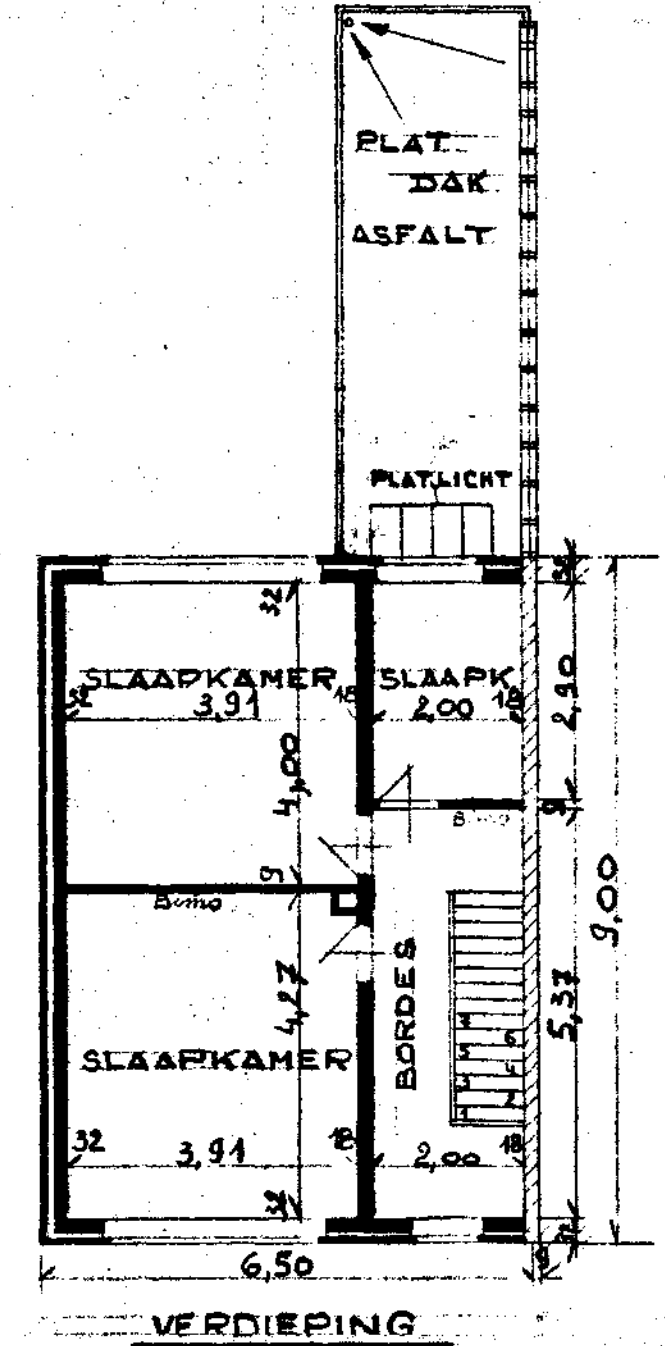
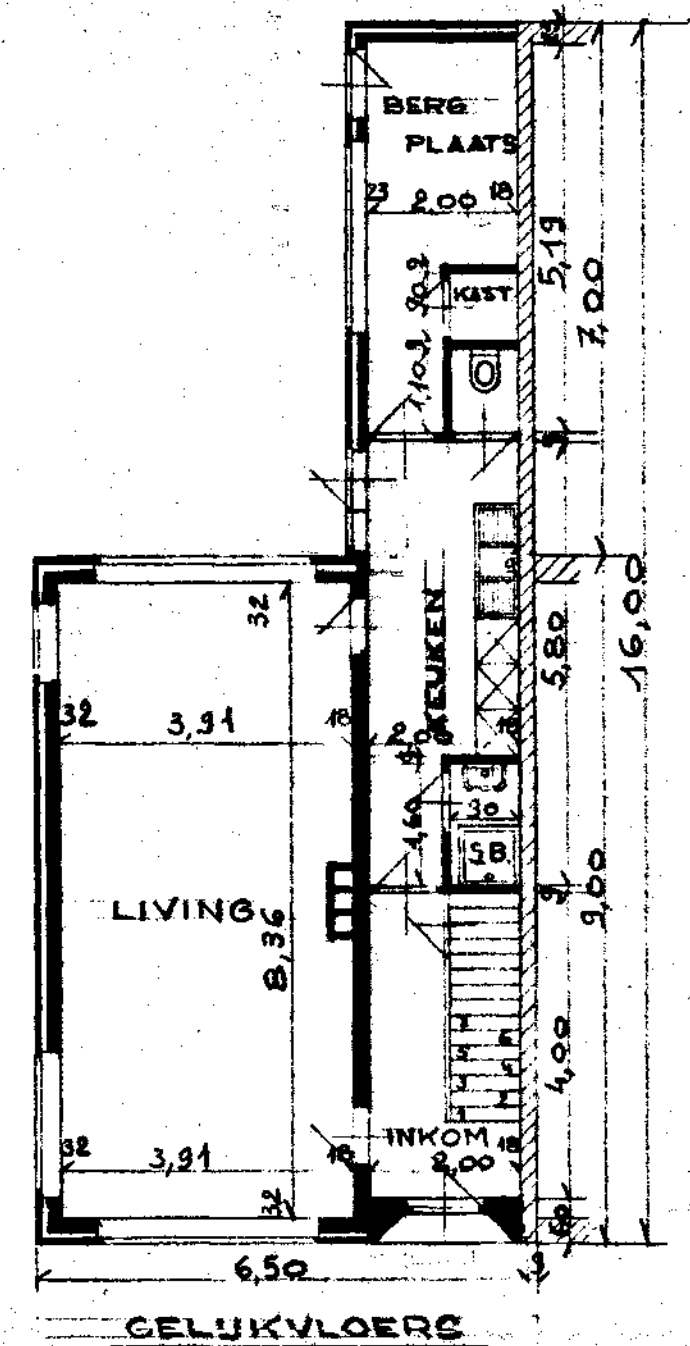
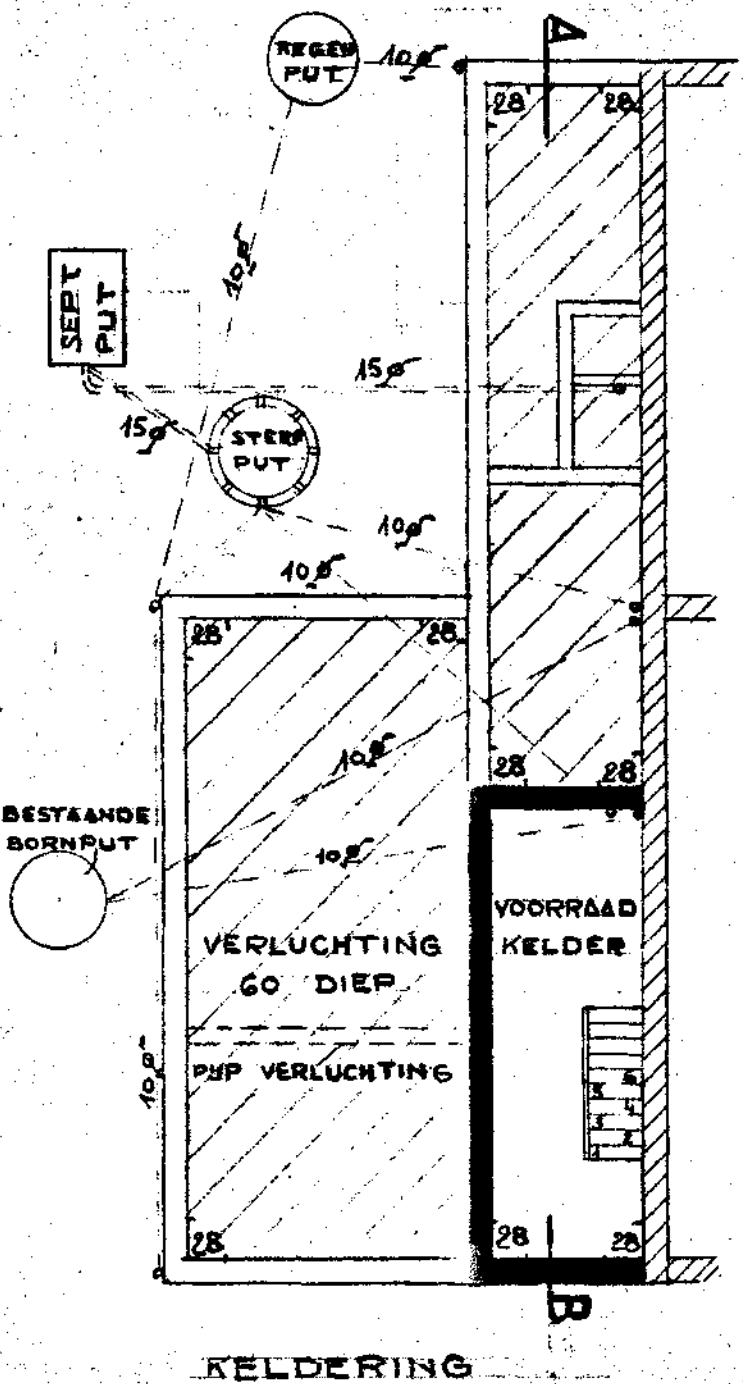
RODE PANNEN POTTTELBERG (KLEI) - DEUREN RAMEN KROONLUSTEN EN BOORDSELS IN HOUT - VOOR EN ZUGEVEL RODE HANDVORM - PLINT BRUINE HANDVORM RAAM EN DEURDORPELS BLAUWE NATUURSTEEN VOORHOF AFSLUITING BRUINE HANDVORM



OPDRACHT	BOUWEN VAN PREMIEWONING TE	
	ST. JOB IN'T GOOR	
	BRAAKSTRAAT SECT. A 150 <sup>M2</sup> DEEL	
OPDRACHT	MERTENS JOZEF	
GEVER	S. PIÉRET A BREDABAAN 388 MERKSEM	
DE EIGENAAR	DE AANNEMER	DE ARCHITECT
	<i>Mertens J</i>	<i>Piéret</i>
MERTENS JOZEF BELLEMOND 7 S GRAVENVEZEL		S. PIÉRET A BREDABAAN 388 MERKSEM
SCHAAL		
1/100		
1/500		
■ BESTAANDE ■ NIEUW	DOS: 1915	22 MEI 1962



RODE PANNEN POTTELBERG (KLEI) - DEUREN RAMEN  
 KROONLUSTEN EN BOORDSELS IN HOUT - VOOR EN ZIJGE-  
 VEL RODE HANDVORM - PLINT BRUINE HANDVORM  
 RAAM EN DEURDORPELS BLAUWE NATUURSTEEN  
 VOORHOF AFSLUITING BRUINE HANDVORM



BOUWEN VAN PREMIEWOONING TE		
ST. JOB IN'T GOOR		
BRAAKSTRAAT SECT. A 150 <sup>M²</sup> DEEL		
OPDRACHT	MERTENS JOZEF	
GEVER	MERTENS JOZEF	
DE EIGENAAR	DE AANNEMER	DE ARCHITECT
MERTENS JOZEF		S. PIÉRET A
BELLEMOND 7		BREDA BAAN 388
'S GRAVENVEZEL		MERKSEM
SCHAAL		
1/100		
1/500		
BESTAANDE NIEUW		
DOS: 1915	22 MEI 1962	