

Schreinstraat

CRÉÉ LE
5 juin 2026

Surface totale 478.54 m ²	Étages 3	Pièces 19	Salles de bain 1.1
--	--------------------	---------------------	------------------------------

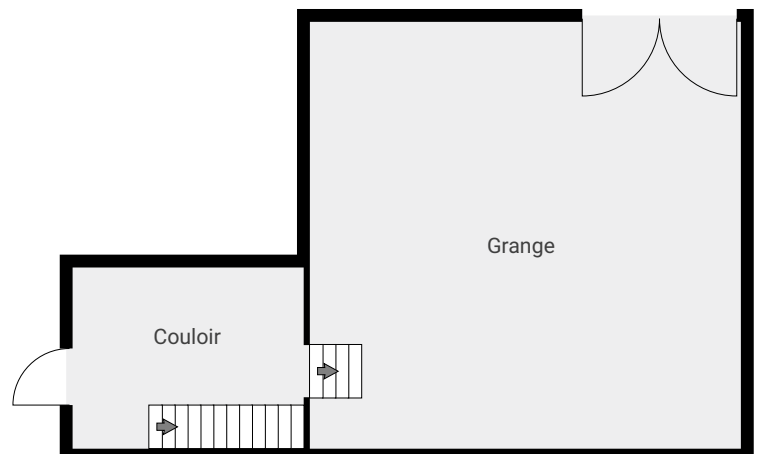
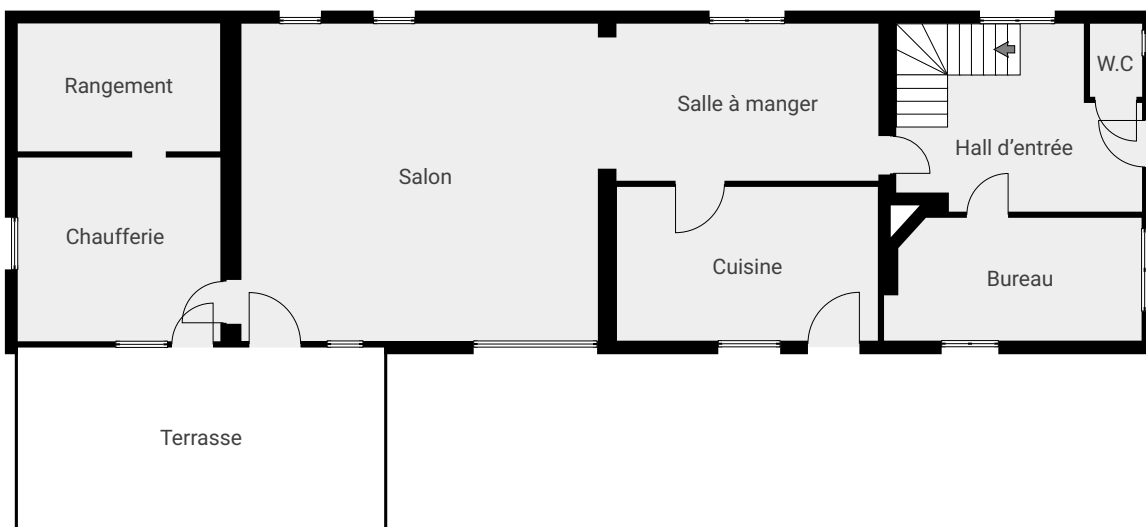
Schreinstraat

SURFACE TOTALE : 478.54 m² • SURFACE HABITABLE : 180.97 m² • ÉTAGES : 3 • PIÈCES : 19



▼ Rez-de-chaussée

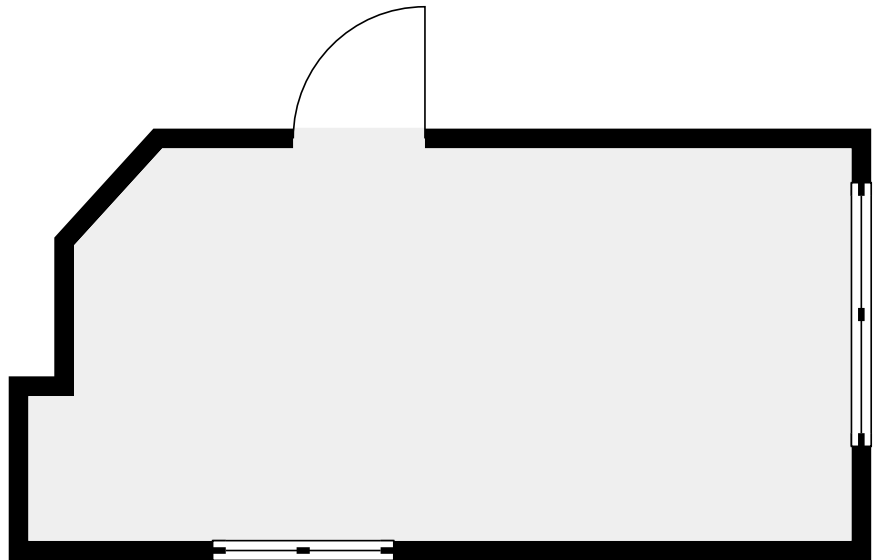
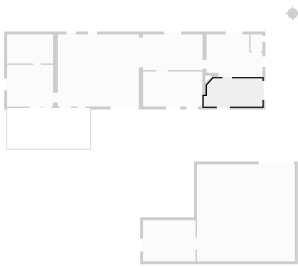
SURFACE TOTALE : 236.05 m² • SURFACE HABITABLE : 126.06 m² • PIÈCES : 10



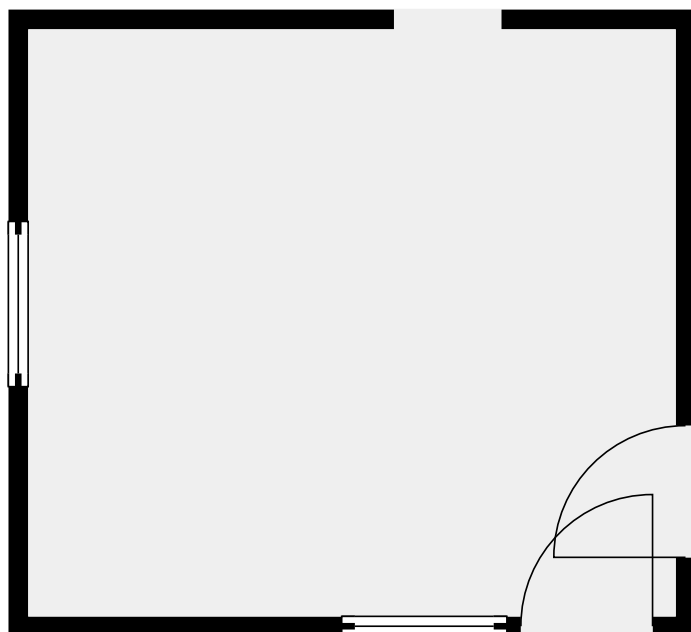
Schreinstraat

SURFACE TOTALE : 478.54 m² • SURFACE HABITABLE : 180.97 m² • ÉTAGES : 3 • PIÈCES : 19

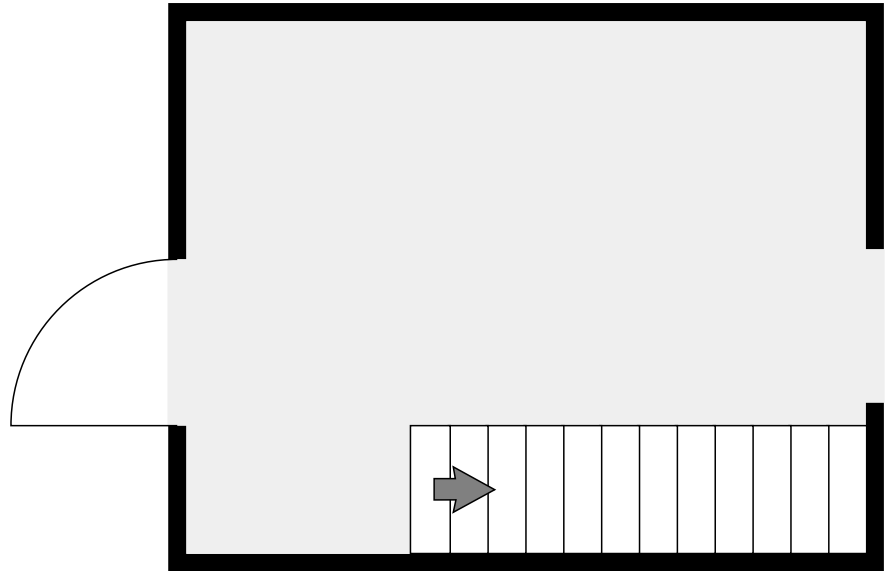
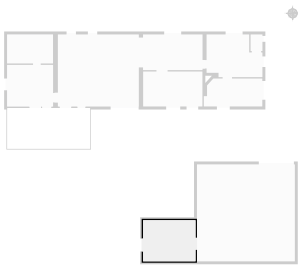
▼ Bureau Rez-de-chaussée



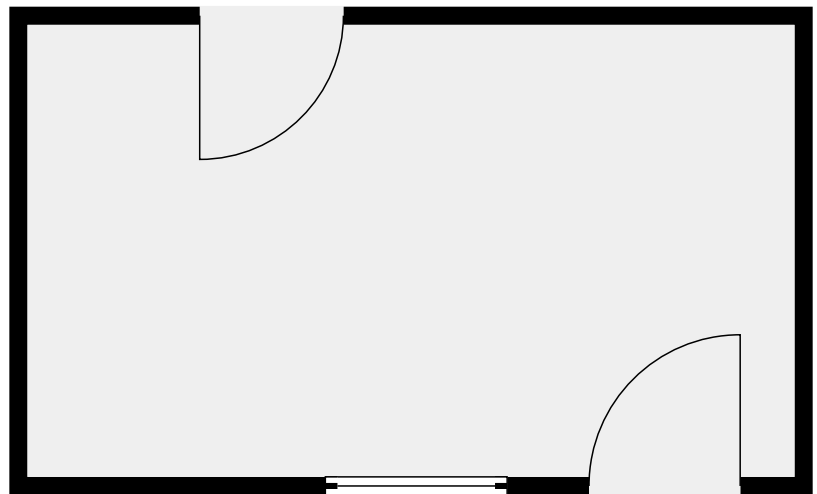
▼ Chaufferie Rez-de-chaussée



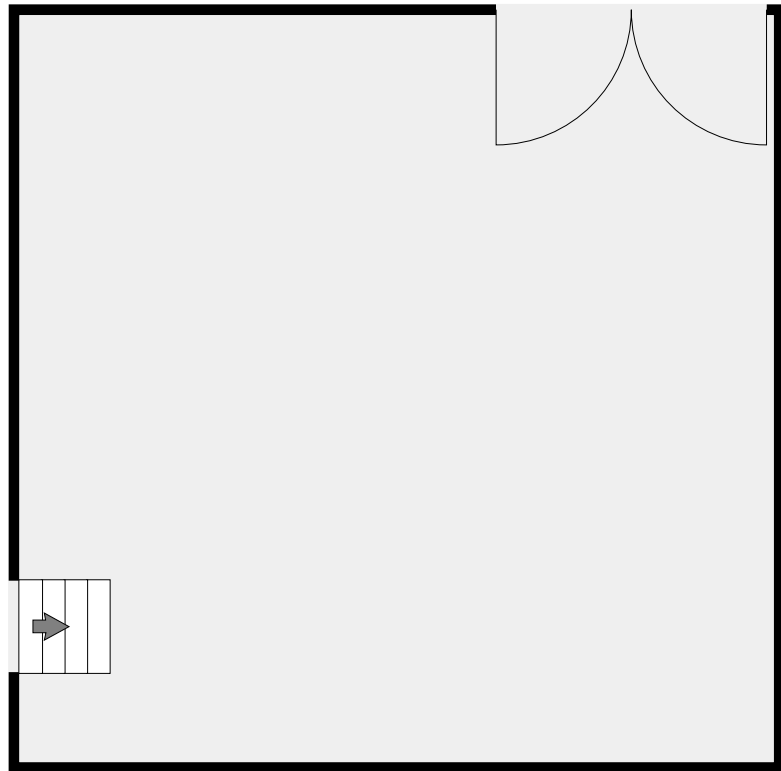
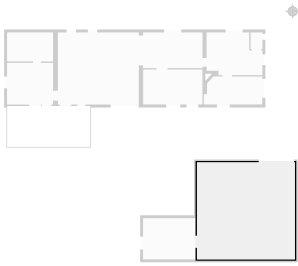
▼ Couloir Rez-de-chaussée



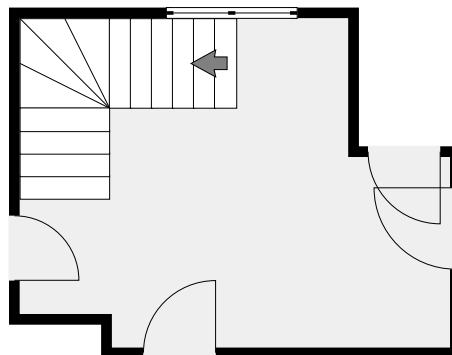
▼ Cuisine Rez-de-chaussée



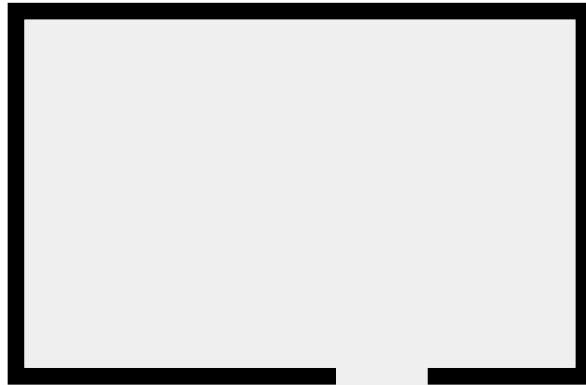
▼ Grange Rez-de-chaussée



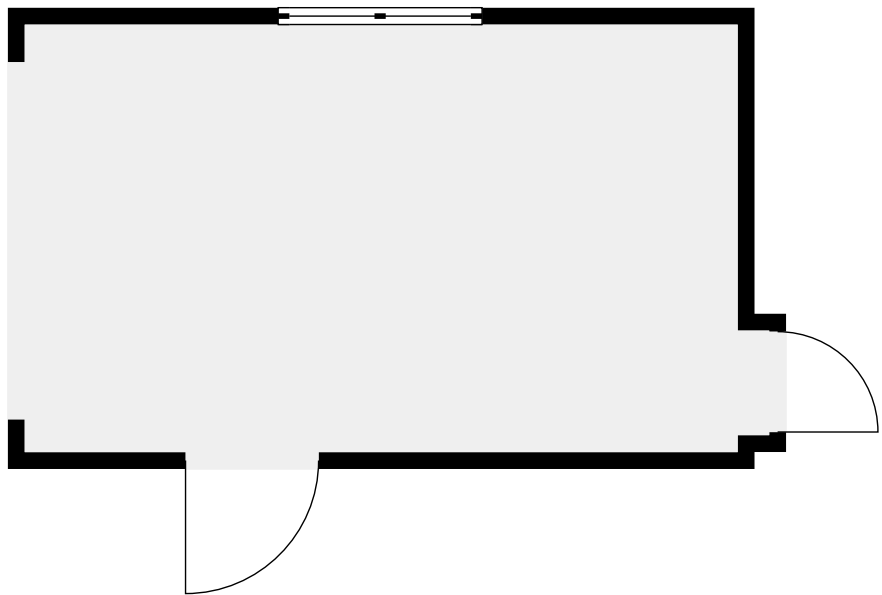
▼ Hall d'entrée Rez-de-chaussée



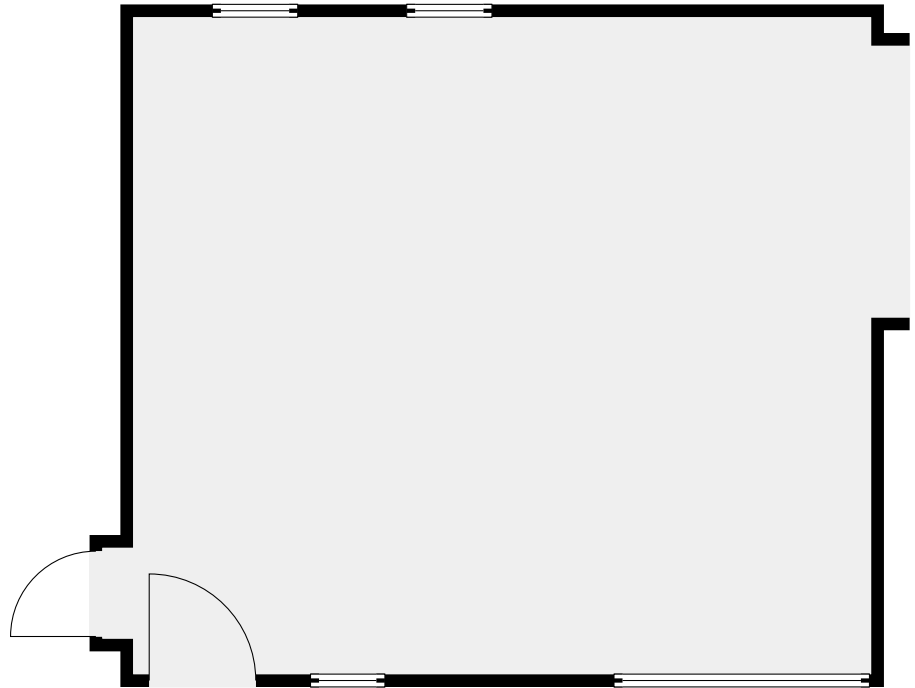
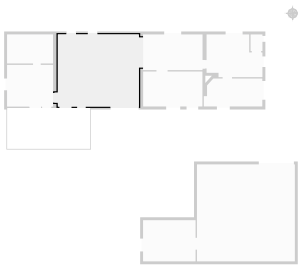
▼ Rangement Rez-de-chaussée



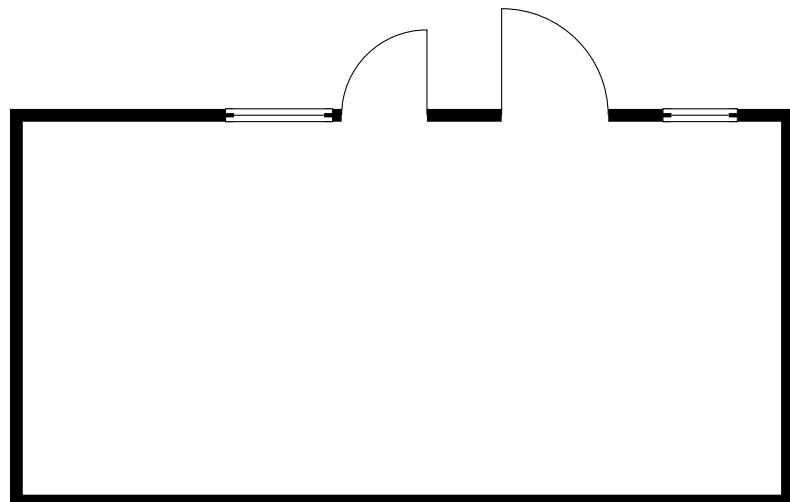
▼ Salle à manger Rez-de-chaussée



▼ Salon Rez-de-chaussée

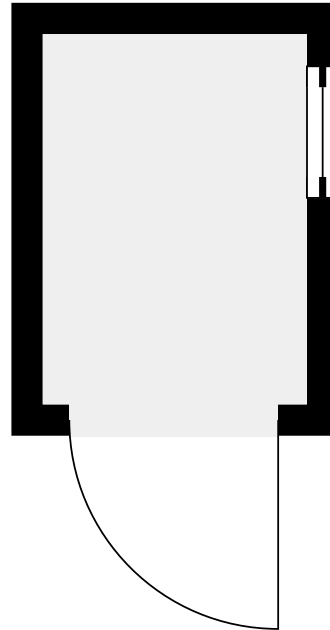


▼ Terrasse Rez-de-chaussée



▼ W.C

Rez-de-chaussée



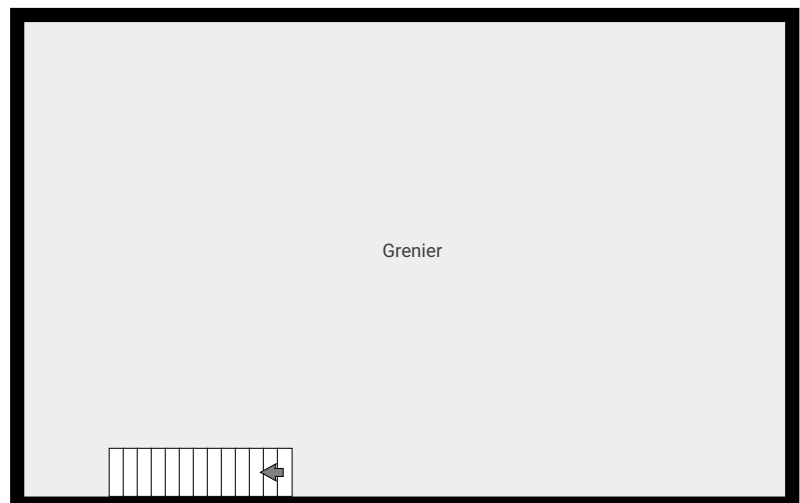
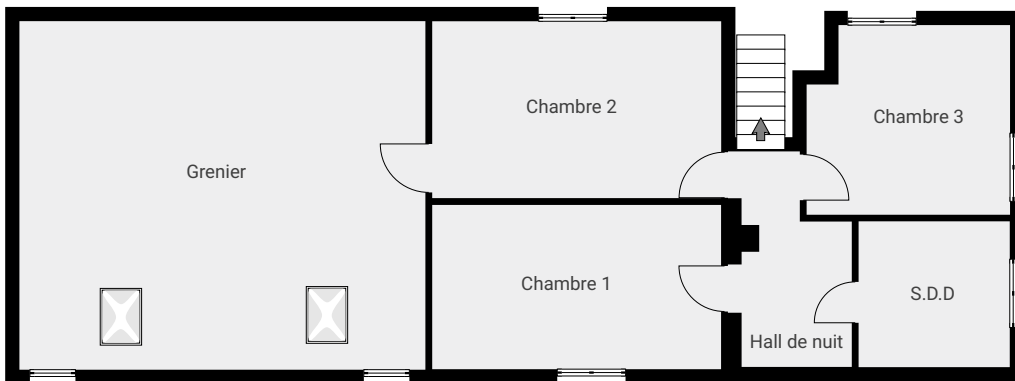
Schreinstraat

SURFACE TOTALE : 478.54 m² • SURFACE HABITABLE : 180.97 m² • ÉTAGES : 3 • PIÈCES : 19

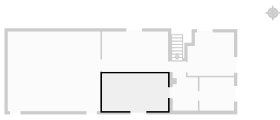


▼ 1er étage

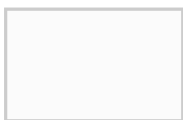
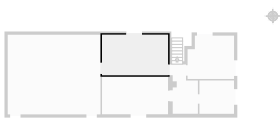
SURFACE TOTALE : 209.93 m² • SURFACE HABITABLE : 54.90 m² • PIÈCES : 7



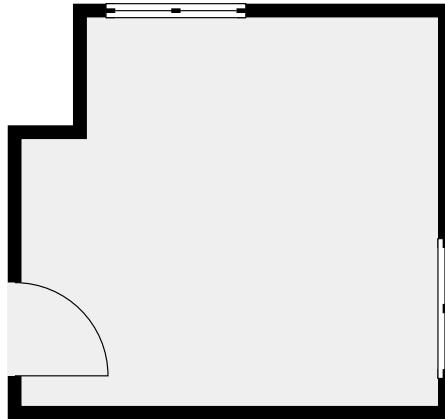
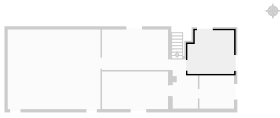
▼ Chambre 1 1er étage



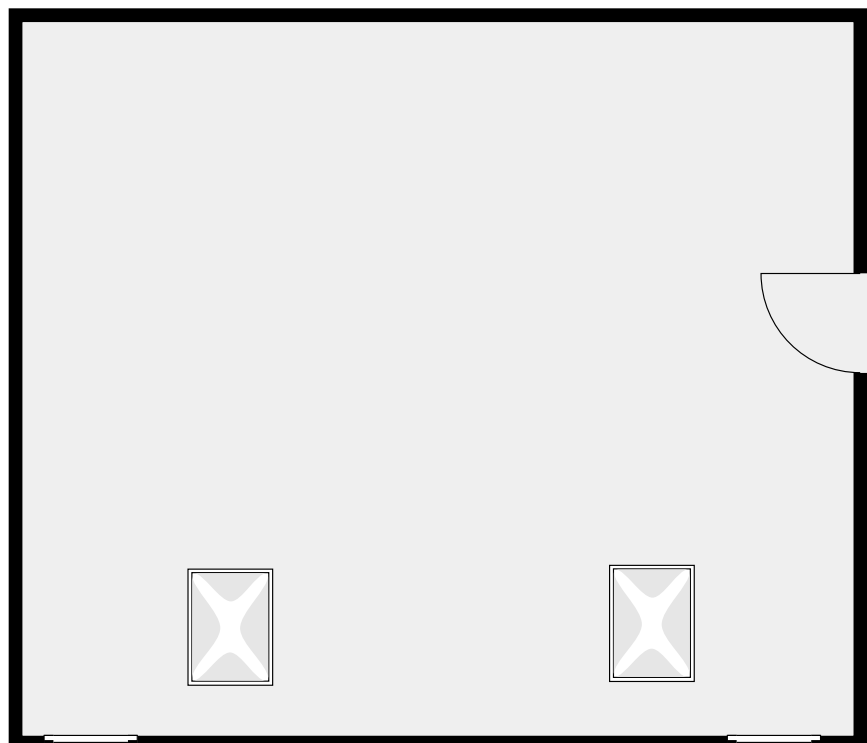
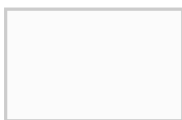
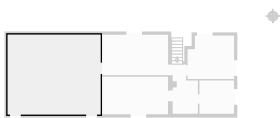
▼ Chambre 2 1er étage



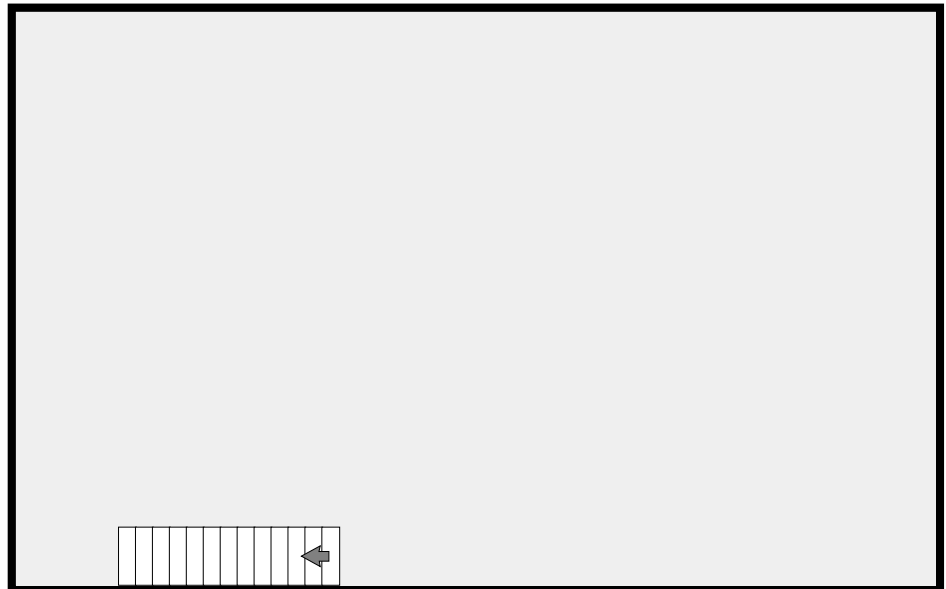
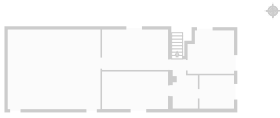
▼ Chambre 3 1er étage



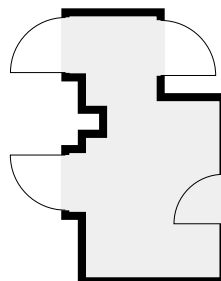
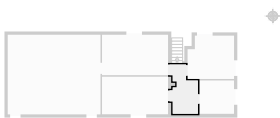
▼ Grenier 1er étage



▼ Grenier 1er étage



▼ Hall de nuit 1er étage

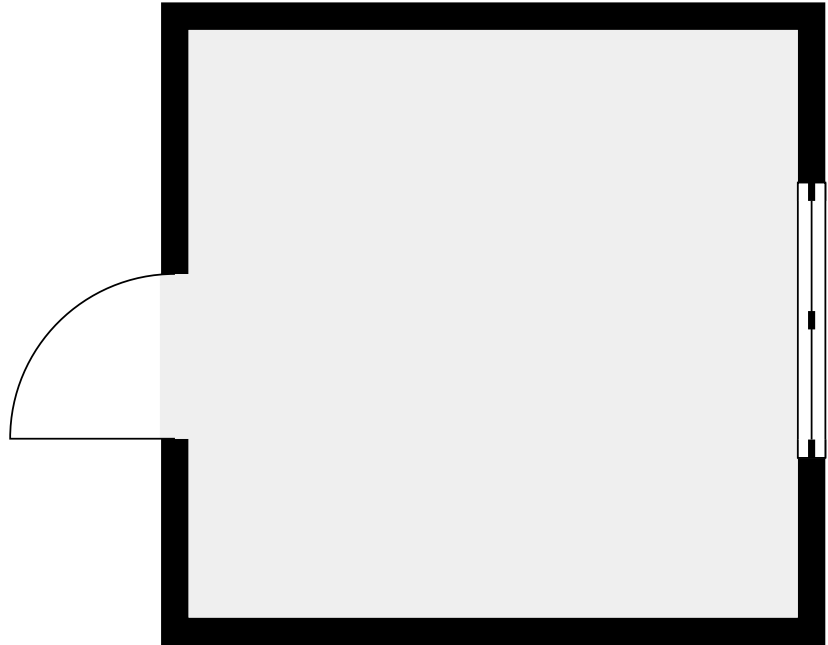
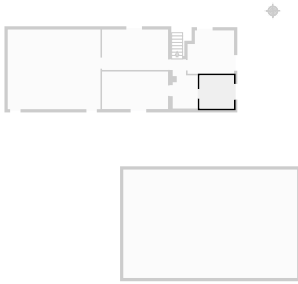


Schreinstraat

SURFACE TOTALE : 478.54 m² • SURFACE HABITABLE : 180.97 m² • ÉTAGES : 3 • PIÈCES : 19

▼ S.D.D

1er étage



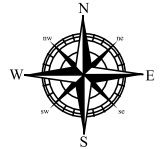
Schreinstraat

SURFACE TOTALE : 478.54 m² • SURFACE HABITABLE : 180.97 m² • ÉTAGES : 3 • PIÈCES : 19



▼ Sous-sol

SURFACE TOTALE : 32.56 m² • SURFACE HABITABLE : 0.00 m² • PIÈCES : 2



▼ Cave
Sous-sol



▼ Cave
Sous-sol

