

Chêne 2A

CRÉÉ LE
2 juin 2026

Surface totale 360.96 m ²	Étages 3	Pièces 20	Salles de bain 3.2
--	--------------------	---------------------	------------------------------

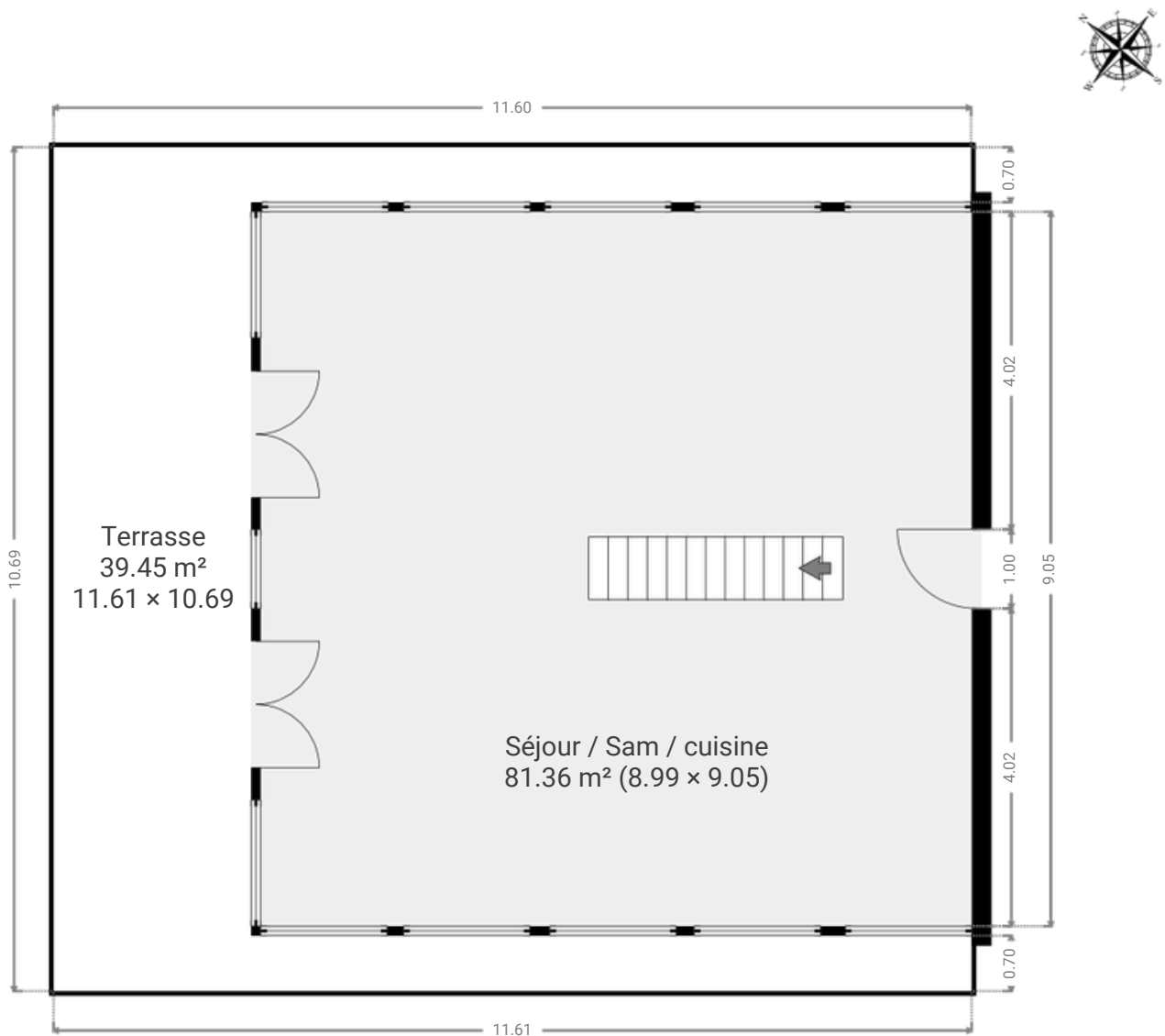
Chêne 2A

SURFACETOTALE:360.96 m²·SURFACE HABITABLE :284.85 m²·ÉTAGES :3·PIÈCES :20



▼ Niveau 1

SURFACE TOTALE :120.79 m²·SURFACE HABITABLE :81.36 m²·PIÈCES :1



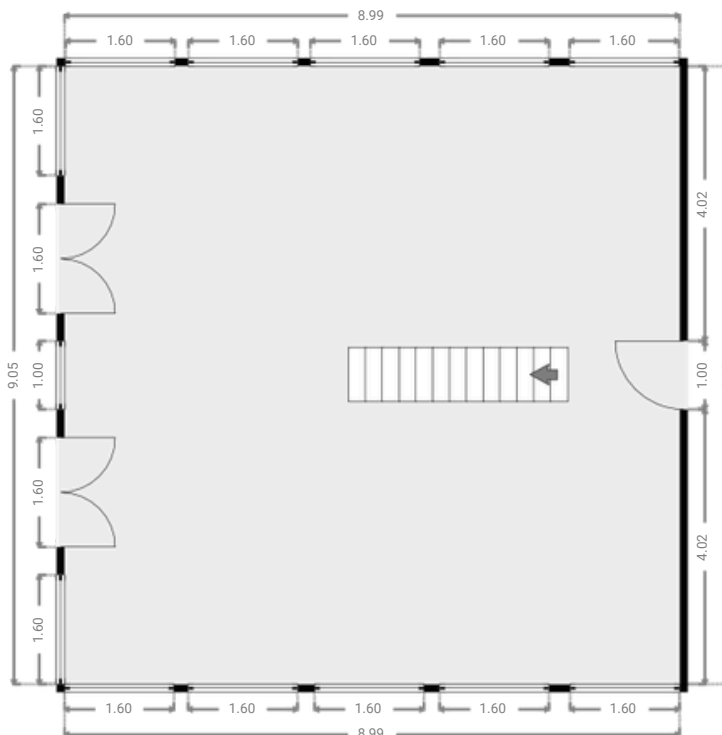
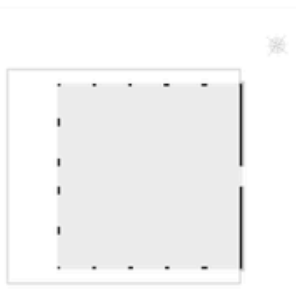
Chêne 2A

SURFACETOTALE:360.96 m²•SURFACE HABITABLE :284.85 m²•ÉTAGES :3•PIÈCES :20



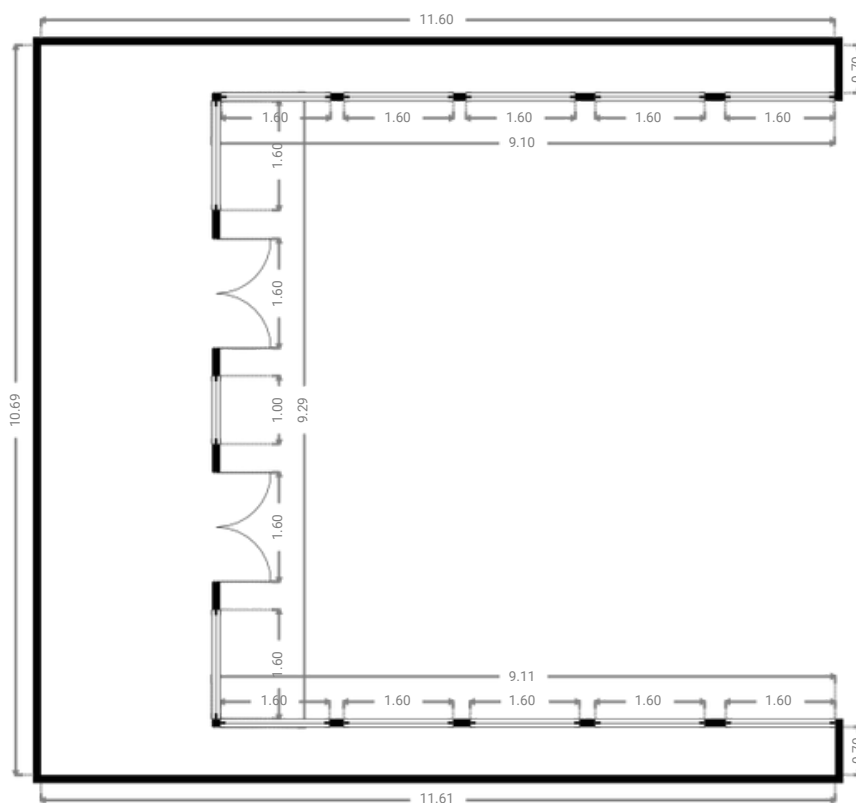
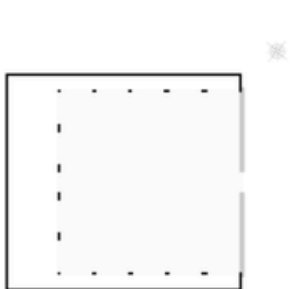
▼ Séjour / Cuisine Niveau 1

LARGEUR :8.99 m•LONGUEUR :9.05 m
SURFACE :81.36 m²•PÉRIMÈTRE :36.08 m



▼ Terrasse Niveau 1

LARGEUR :11.61 m•LONGUEUR :10.69 m
SURFACE :39.45 m²•PÉRIMÈTRE :62.79 m



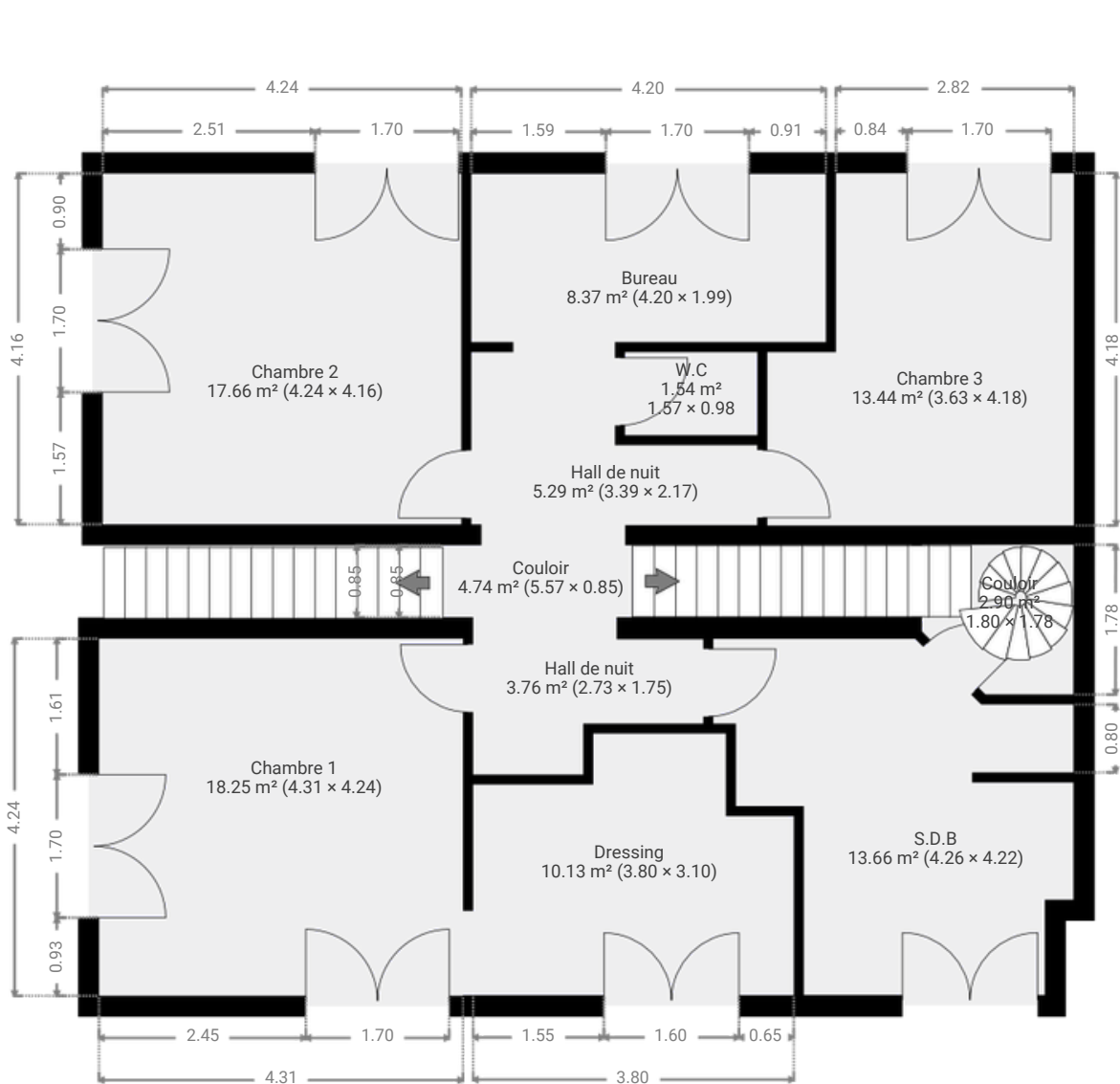
Chêne 2A

SURFACETOTALE:360.96 m²·SURFACE HABITABLE :284.85 m²·ÉTAGES :3·PIÈCES :20



▼ Niveau 2

SURFACE TOTALE :99.69 m²·SURFACE HABITABLE :99.69 m²·PIÈCES :11



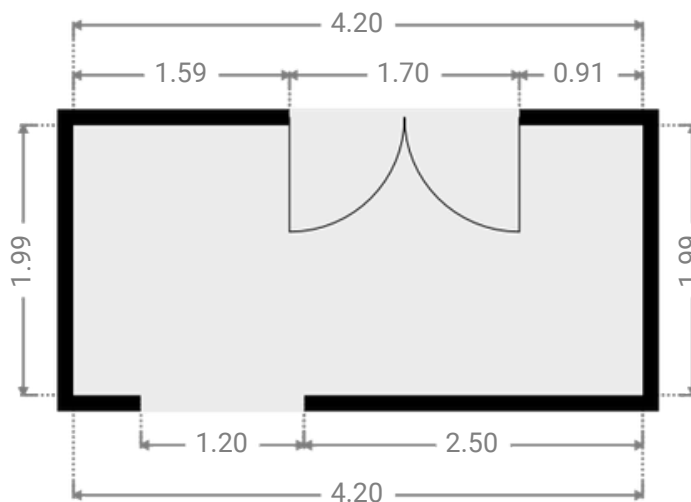
Chêne 2A

SURFACETOTALE:360.96 m²•SURFACE HABITABLE :284.85 m²•ÉTAGES :3•PIÈCES :20



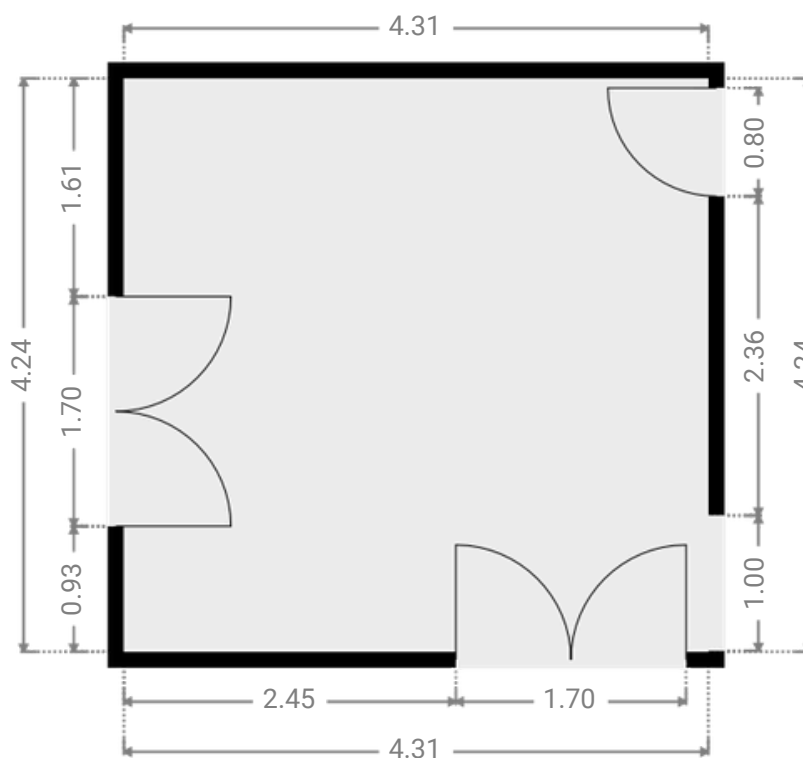
▼ Bureau Niveau 2

LARGEUR :4.20 m•LONGUEUR :1.99 m
SURFACE :8.37 m²•PÉRIMÈTRE :12.38 m



▼ Chambre 1 Niveau 2

LARGEUR :4.31 m•LONGUEUR :4.24 m
SURFACE :18.25 m²•PÉRIMÈTRE :17.09 m



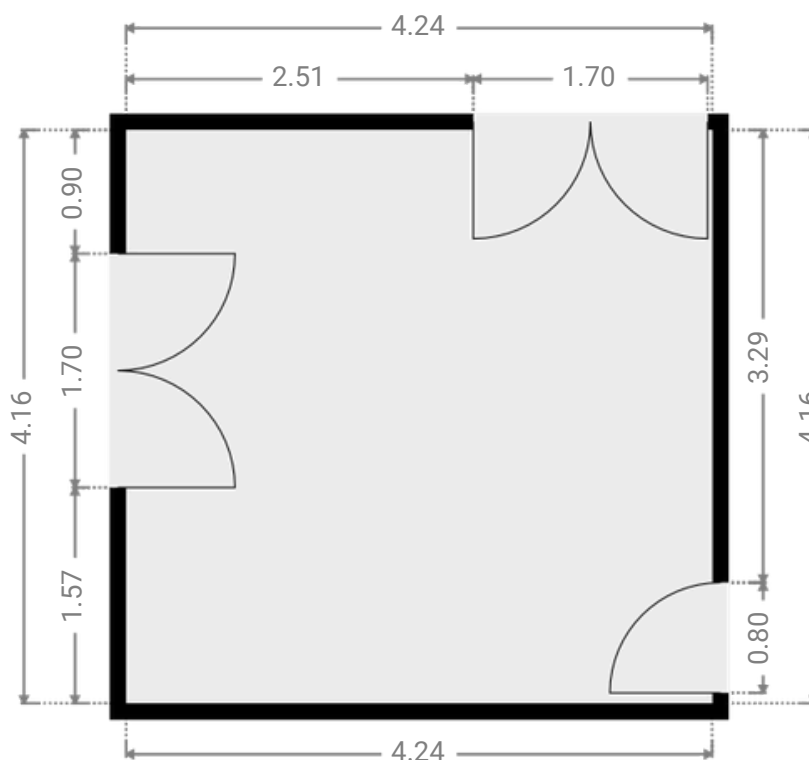
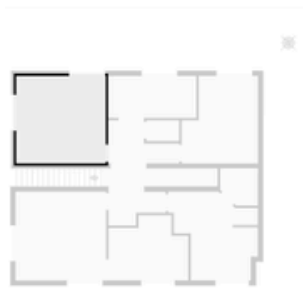
Chêne 2A

SURFACETOTALE:360.96 m²·SURFACE HABITABLE :284.85 m²·ÉTAGES :3·PIÈCES :20



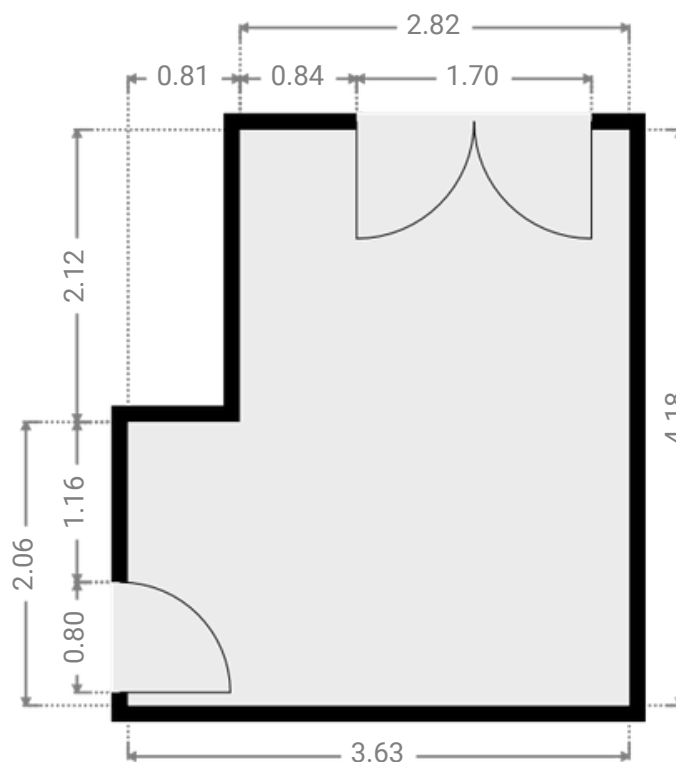
▼ Chambre 2 Niveau 2

LARGEUR :4.24 m·LONGUEUR :4.16 m
SURFACE :17.66 m²·PÉRIMÈTRE :16.81 m



▼ Chambre 3 Niveau 2

LARGEUR :3.63 m·LONGUEUR :4.18 m
SURFACE :13.44 m²·PÉRIMÈTRE :15.62 m



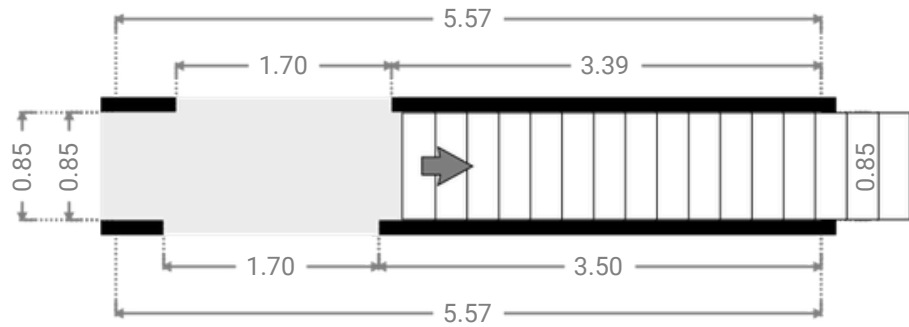
Chêne 2A

SURFACETOTALE:360.96 m²·SURFACE HABITABLE :284.85 m²·ÉTAGES :3·PIÈCES :20



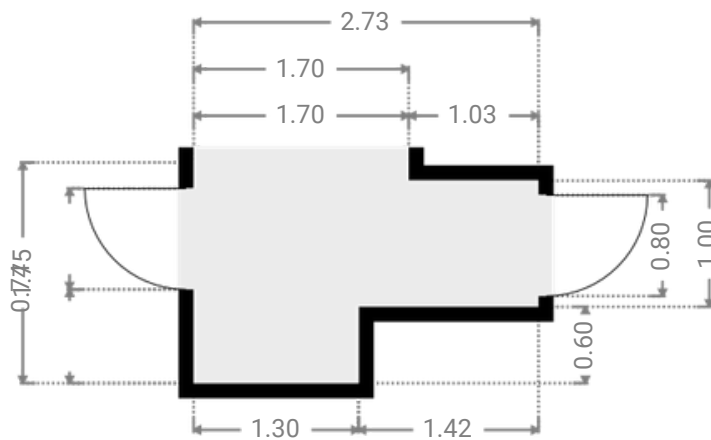
▼ Couloir Niveau 2

LARGEUR :5.57 m·LONGUEUR :0.85 m
SURFACE :4.74 m²·PÉRIMÈTRE :12.85 m



▼ Hall de Nuit Niveau 2

LARGEUR :2.73 m·LONGUEUR :1.75 m
SURFACE :3.76 m²·PÉRIMÈTRE :8.95 m



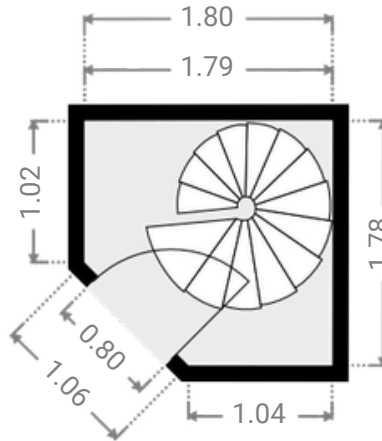
Chêne 2A

SURFACETOTALE:360.96 m²·SURFACE HABITABLE :284.85 m²·ÉTAGES :3·PIÈCES :20



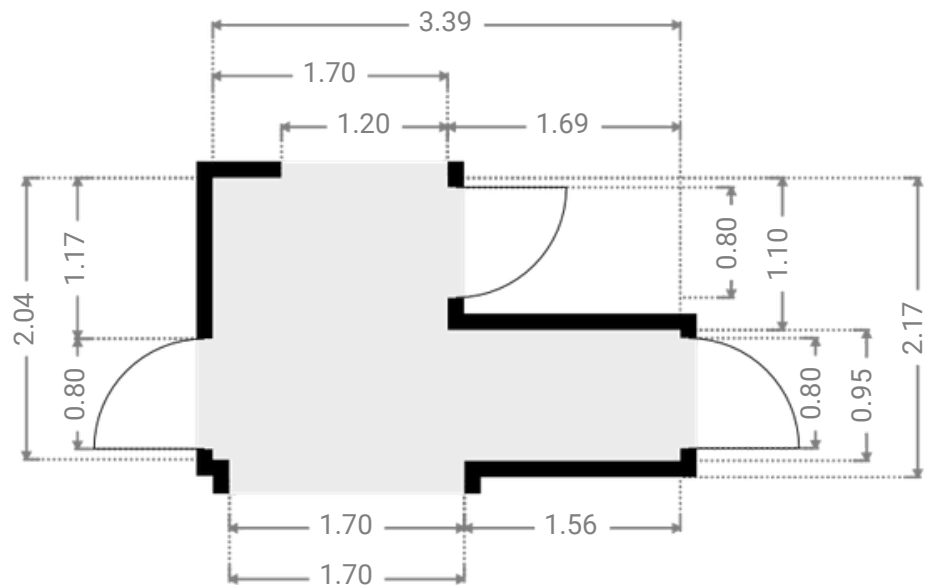
▼ Couloir Sous-sol

LARGEUR :1.80 m·LONGUEUR :1.78 m
SURFACE :2.90 m²·PÉRIMÈTRE :6.69 m



▼ Hall de Nuit Niveau 2

LARGEUR :3.39 m·LONGUEUR :2.17 m
SURFACE :5.29 m²·PÉRIMÈTRE :11.12 m



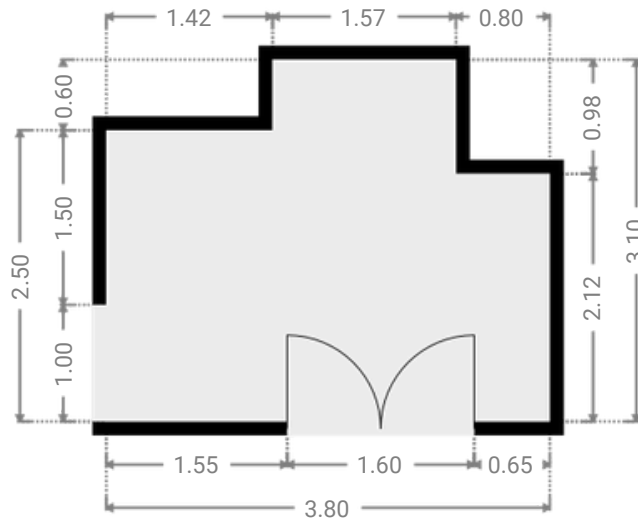
Chêne 2A

SURFACE TOTALE: 360.96 m² • SURFACE HABITABLE : 284.85 m² • ÉTAGES : 3 • PIÈCES : 20



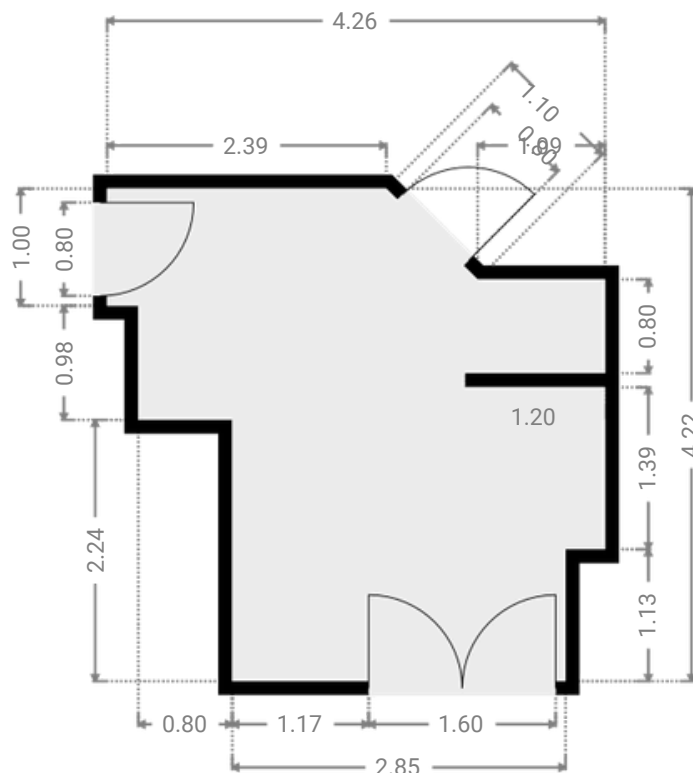
▼ Dressing Niveau 2

LARGEUR : 3.80 m • LONGUEUR : 3.10 m
SURFACE : 10.13 m² • PÉRIMÈTRE : 13.80 m



▼ S.D.B Niveau 2

LARGEUR : 4.26 m • LONGUEUR : 4.22 m
SURFACE : 13.66 m² • PÉRIMÈTRE : 18.92 m



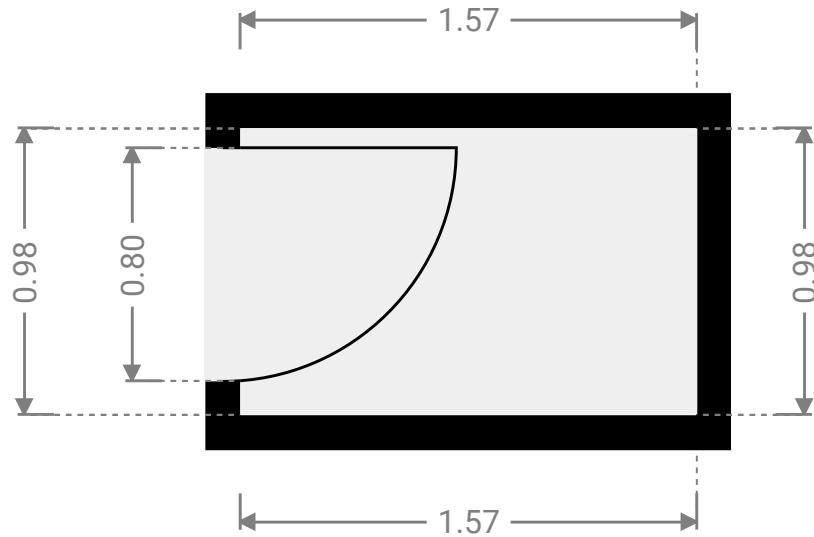
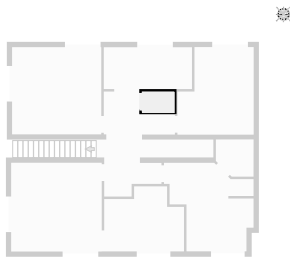
Chêne 2A

SURFACETOTALE:360.96 m²·SURFACE HABITABLE :284.85 m²·ÉTAGES :3·PIÈCES :20



▼ W.C Niveau 2

LARGEUR :1.57 m·LONGUEUR :0.98 m
SURFACE :1.54 m²·PÉRIMÈTRE :5.10 m



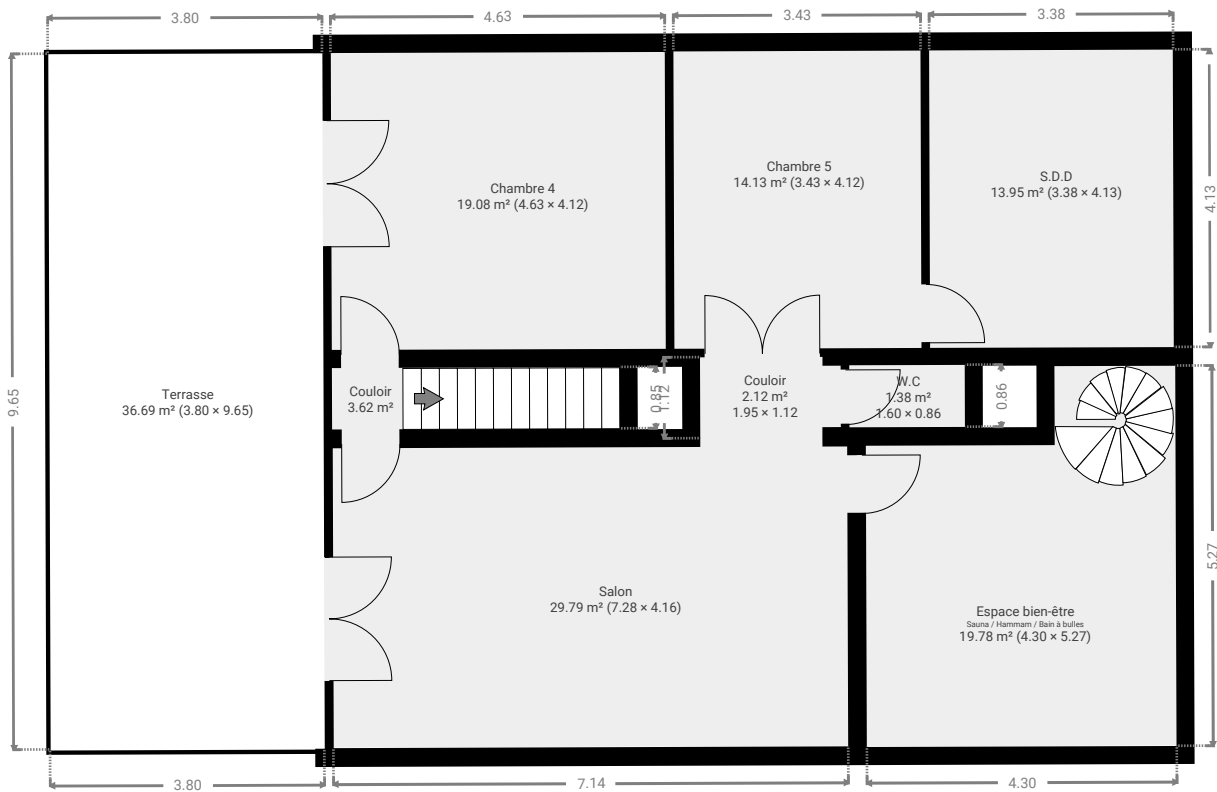
Chêne 2A

SURFACETOTALE:360.96 m²·SURFACE HABITABLE :284.85 m²·ÉTAGES :3·PIÈCES :20



▼ Niveau 3

SURFACE TOTALE :140.47 m²·SURFACE HABITABLE :103.80 m²·PIÈCES :8



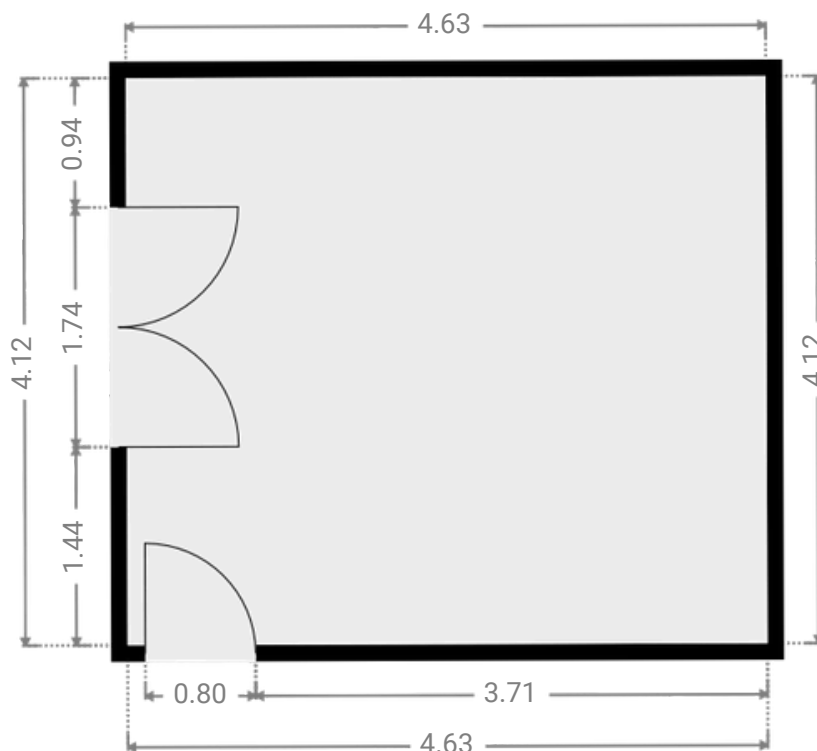
Chêne 2A

SURFACETOTALE:360.96 m²·SURFACE HABITABLE :284.85 m²·ÉTAGES :3·PIÈCES :20



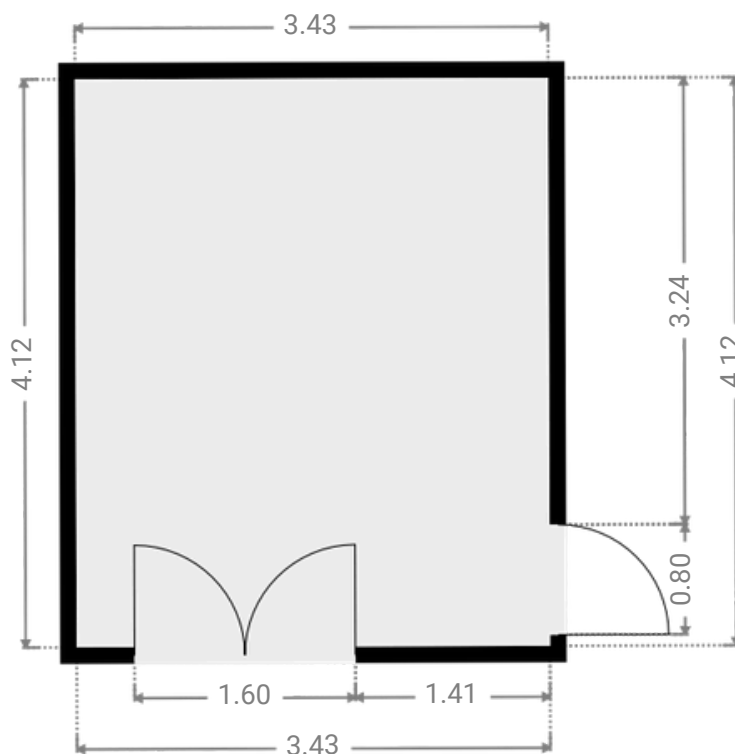
▼ Chambre 4 Niveau 3

LARGEUR :4.63 m·LONGUEUR :4.12 m
SURFACE :19.08 m²·PÉRIMÈTRE :17.50 m



▼ Chambre 5 Niveau 3

LARGEUR :3.43 m·LONGUEUR :4.12 m
SURFACE :14.13 m²·PÉRIMÈTRE :15.10 m



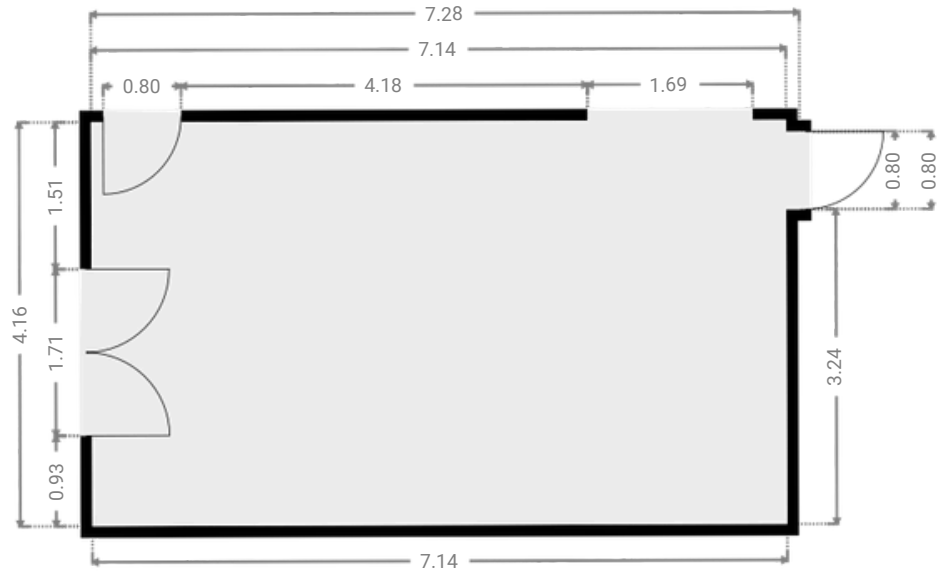
Chêne 2A

SURFACETOTALE:360.96 m²·SURFACE HABITABLE :284.85 m²·ÉTAGES :3·PIÈCES :20



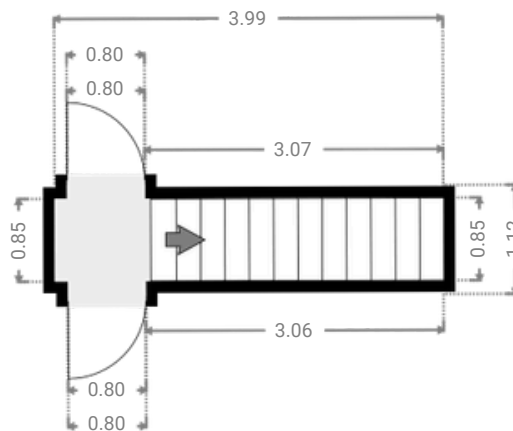
▼ Salon Niveau 3

LARGEUR :7.28 m·LONGUEUR :4.16 m
SURFACE :29.79 m²·PÉRIMÈTRE :22.87 m



▼ Couloir Niveau 3

LARGEUR :3.99 m·LONGUEUR :1.12 m
SURFACE :3.62 m²·PÉRIMÈTRE :10.23 m



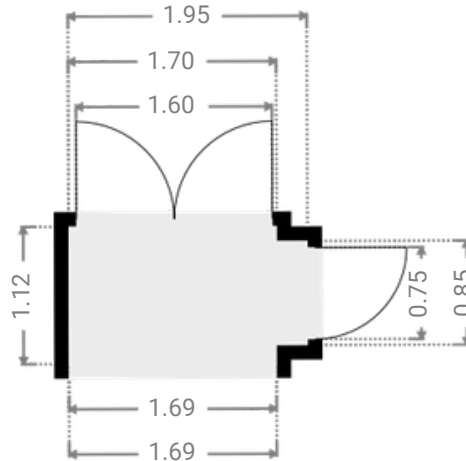
Chêne 2A

SURFACETOTALE:360.96 m²•SURFACE HABITABLE :284.85 m²•ÉTAGES :3•PIÈCES :20



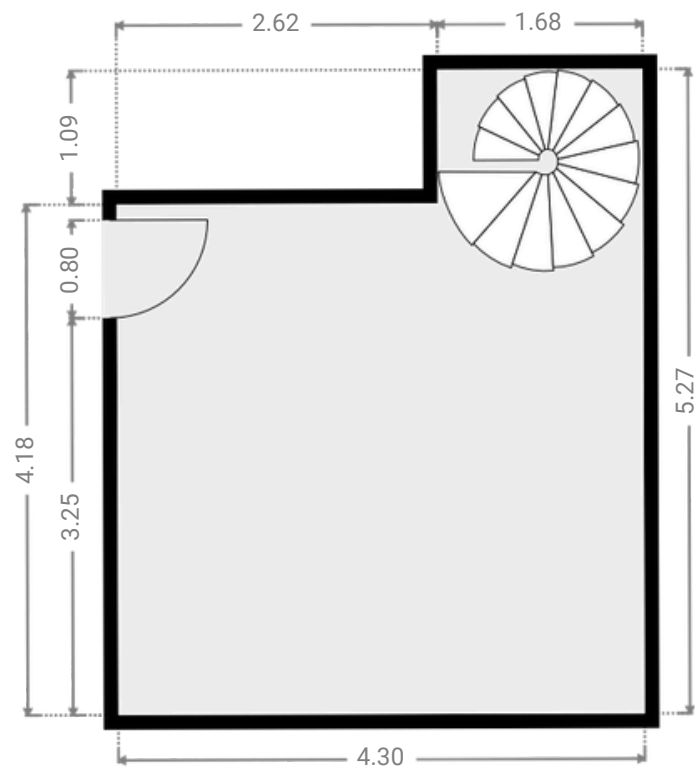
▼ Couloir Niveau 3

LARGEUR :1.95 m•LONGUEUR :1.12 m
SURFACE :2.12 m²•PÉRIMÈTRE :6.15 m



▼ Espace bien-être Niveau 3

LARGEUR :4.30 m•LONGUEUR :5.27 m
SURFACE :19.78 m²•PÉRIMÈTRE :19.14 m



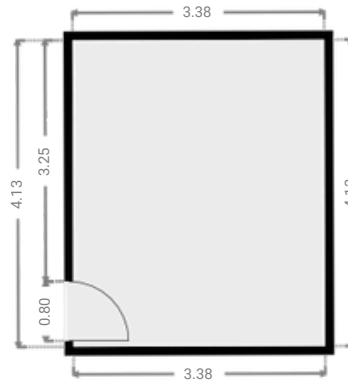
Chêne 2A

SURFACETOTALE:360.96 m²·SURFACE HABITABLE :284.85 m²·ÉTAGES :3·PIÈCES :20



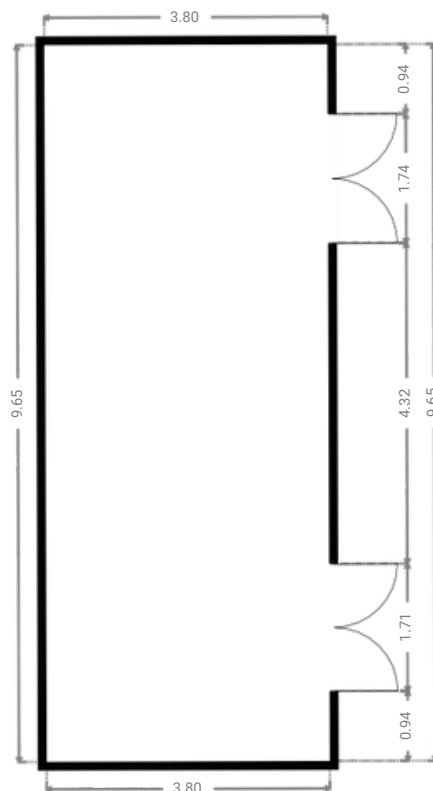
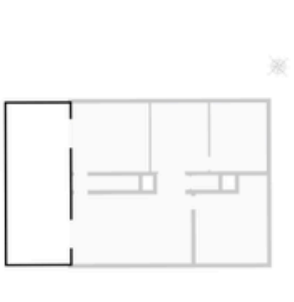
▼ S.D.D Niveau 3

LARGEUR :3.38 m·LONGUEUR :4.13 m
SURFACE :13.95 m²·PÉRIMÈTRE :15.02 m



▼ Terrasse Niveau 3

LARGEUR :3.80 m·LONGUEUR :9.65 m
SURFACE :36.69 m²·PÉRIMÈTRE :26.90 m



Chêne 2A

SURFACETOTALE:360.96 m²·SURFACE HABITABLE :284.85 m²·ÉTAGES :3·PIÈCES :20



▼ W.C Niveau 3

LARGEUR :1.60 m·LONGUEUR :0.86 m
SURFACE :1.38 m²·PÉRIMÈTRE :4.93 m

