

10

# SURFACE TERRAIN 7a15ca

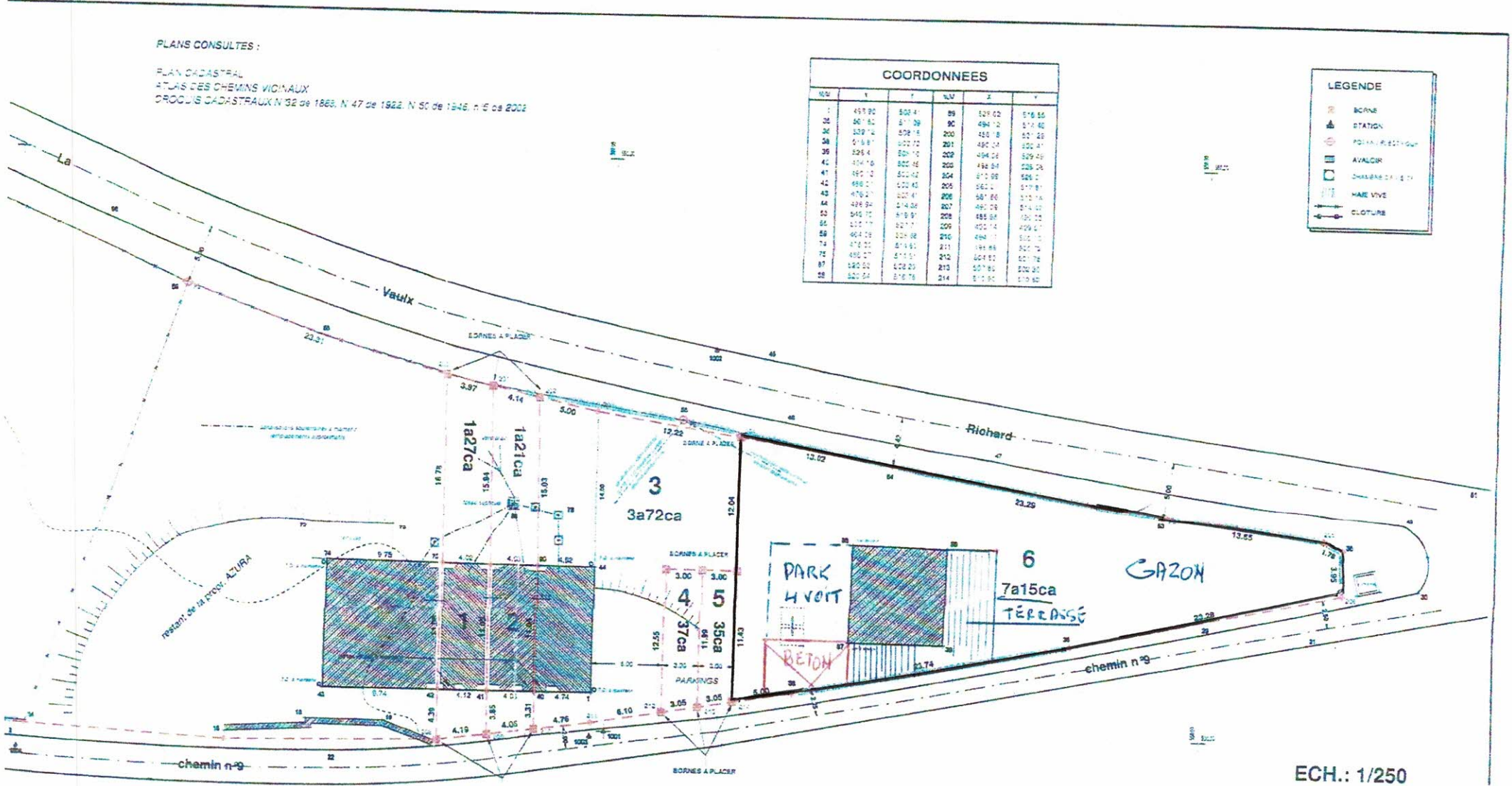
**PLANS CONSULTÉS :**

PLAN CADASTRAL  
 ATLAS DES CHEMINS VICINAUX  
 PRODUIS CADASTRAUX N°32 de 1868, N°47 de 1922, N°50 de 1948, n°5 de 2002

COORDONNEES					
NO	X	Y	NUM	Z	V
1	457.90	503.4	89	429.02	516.55
2	567.80	517.39	90	494.12	514.80
3	339.74	578.15	200	459.8	527.23
38	519.87	500.72	201	490.24	500.81
39	525.4	501.72	202	494.04	509.49
40	534.78	502.46	203	498.84	508.28
41	539.12	503.02	204	512.08	506.0
42	470.21	500.42	205	562.0	517.81
43	470.21	500.42	206	587.86	510.76
44	498.94	514.06	207	492.08	514.00
45	545.70	519.91	208	485.88	500.00
46	510.77	527.7	209	402.74	499.67
49	604.28	529.88	210	494.1	500.00
73	472.21	514.61	211	491.88	501.73
74	480.27	511.51	212	507.02	501.72
87	580.52	428.23	213	507.85	500.90
88	580.52	428.23	214	512.90	510.80

**LEGENDE**

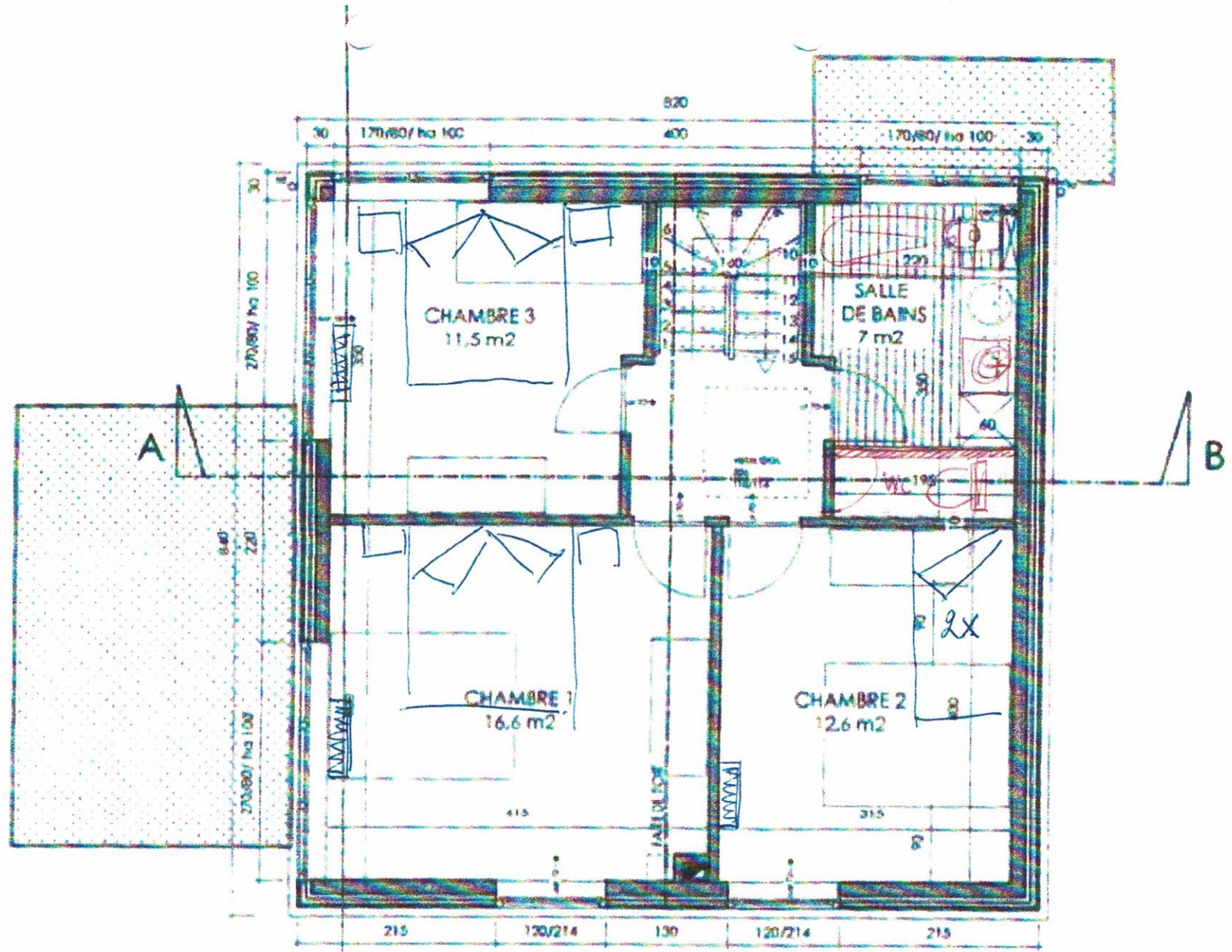
- BORNE
- STATION
- POINT DE NIVELLEMENT
- AVALOIR
- CHAMBRE D'ÉGOUT
- MURE VIVE
- CLÔTURE



ECH.: 1/250

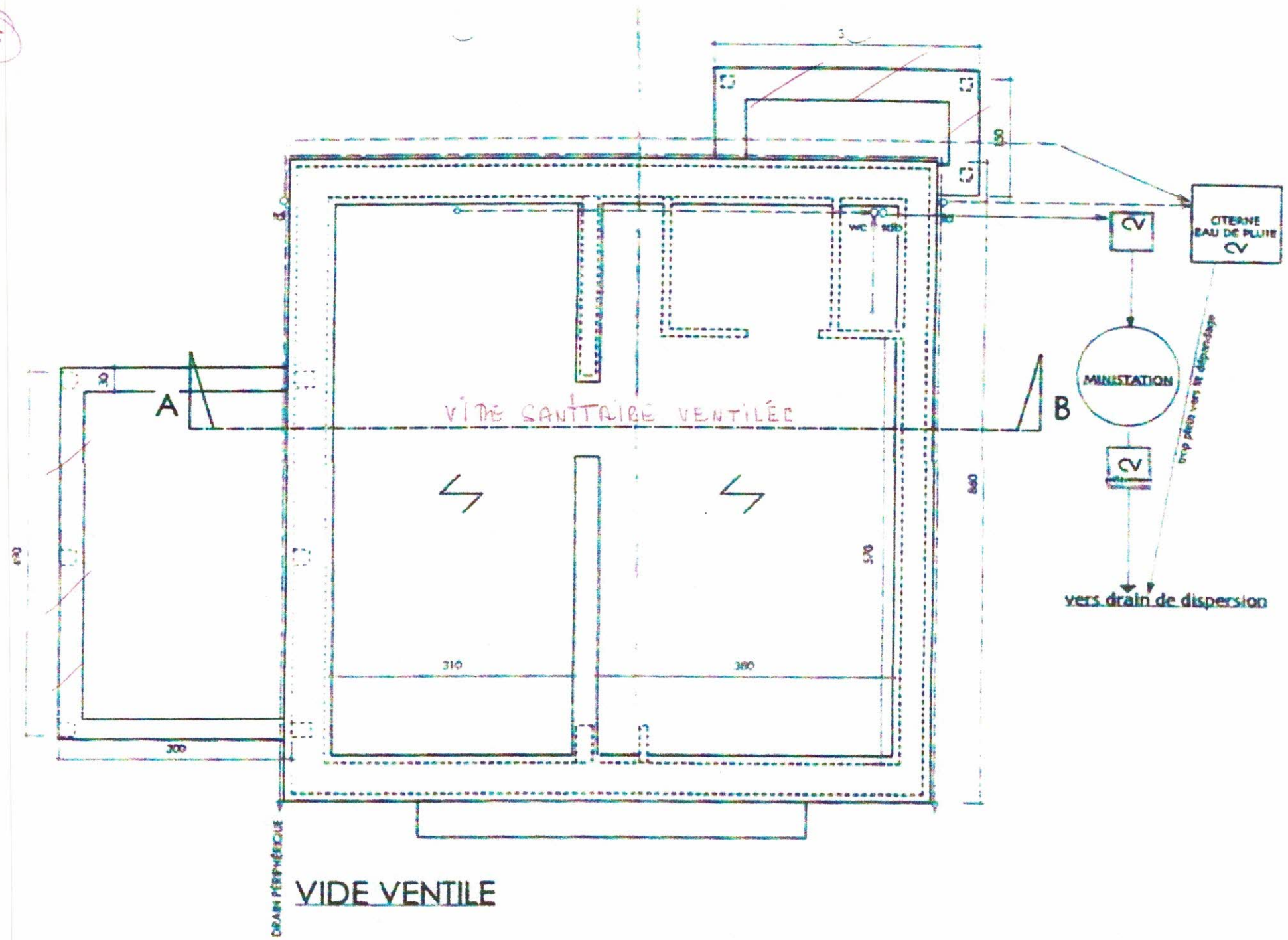


4

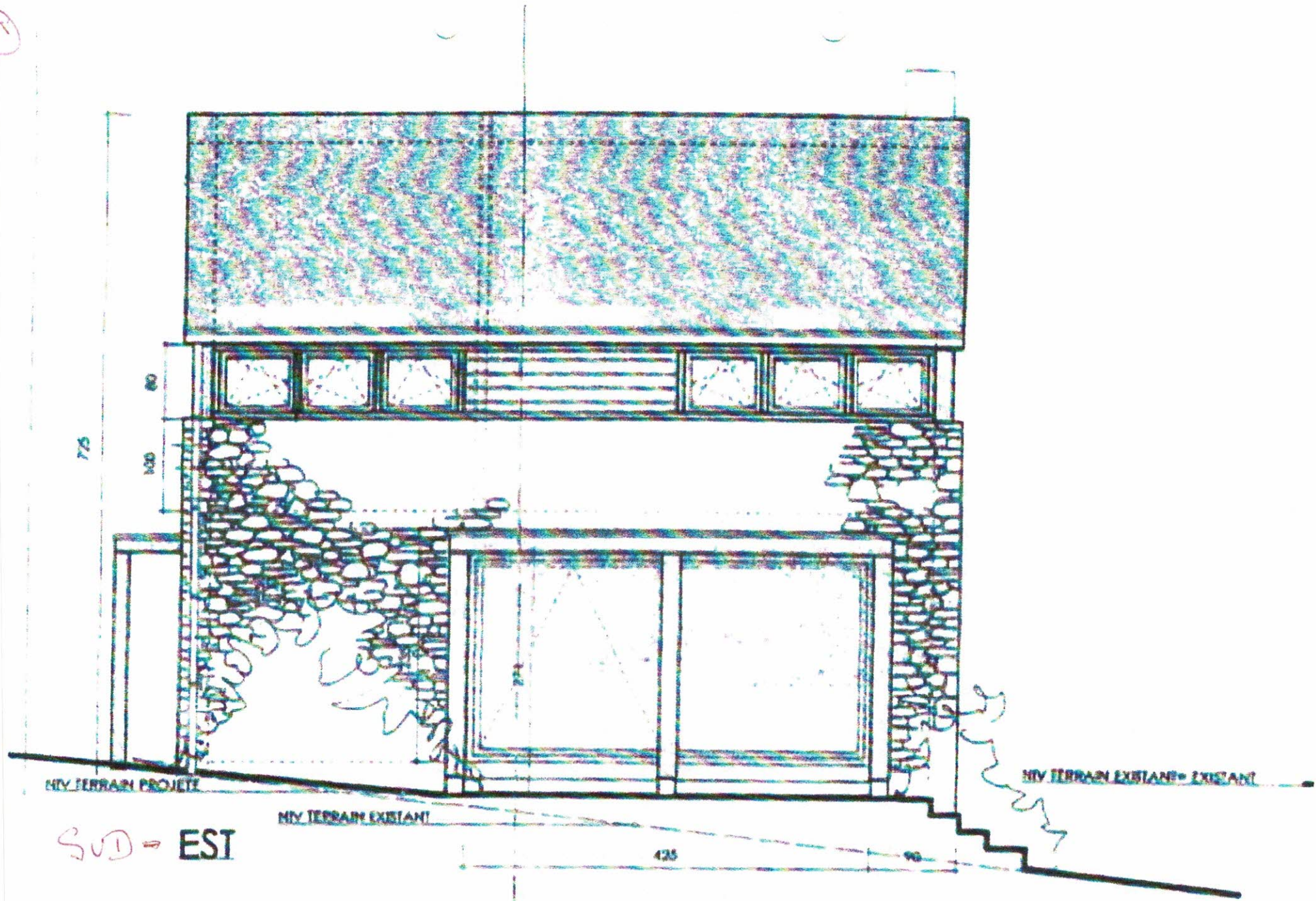


PREMIER ETAGE

0/10



5



75

80

100

NIV TERRAIN PROJETE

NIV TERRAIN EXISTANT

NIV TERRAIN EXISTANT = EXISTANT

SUD = EST

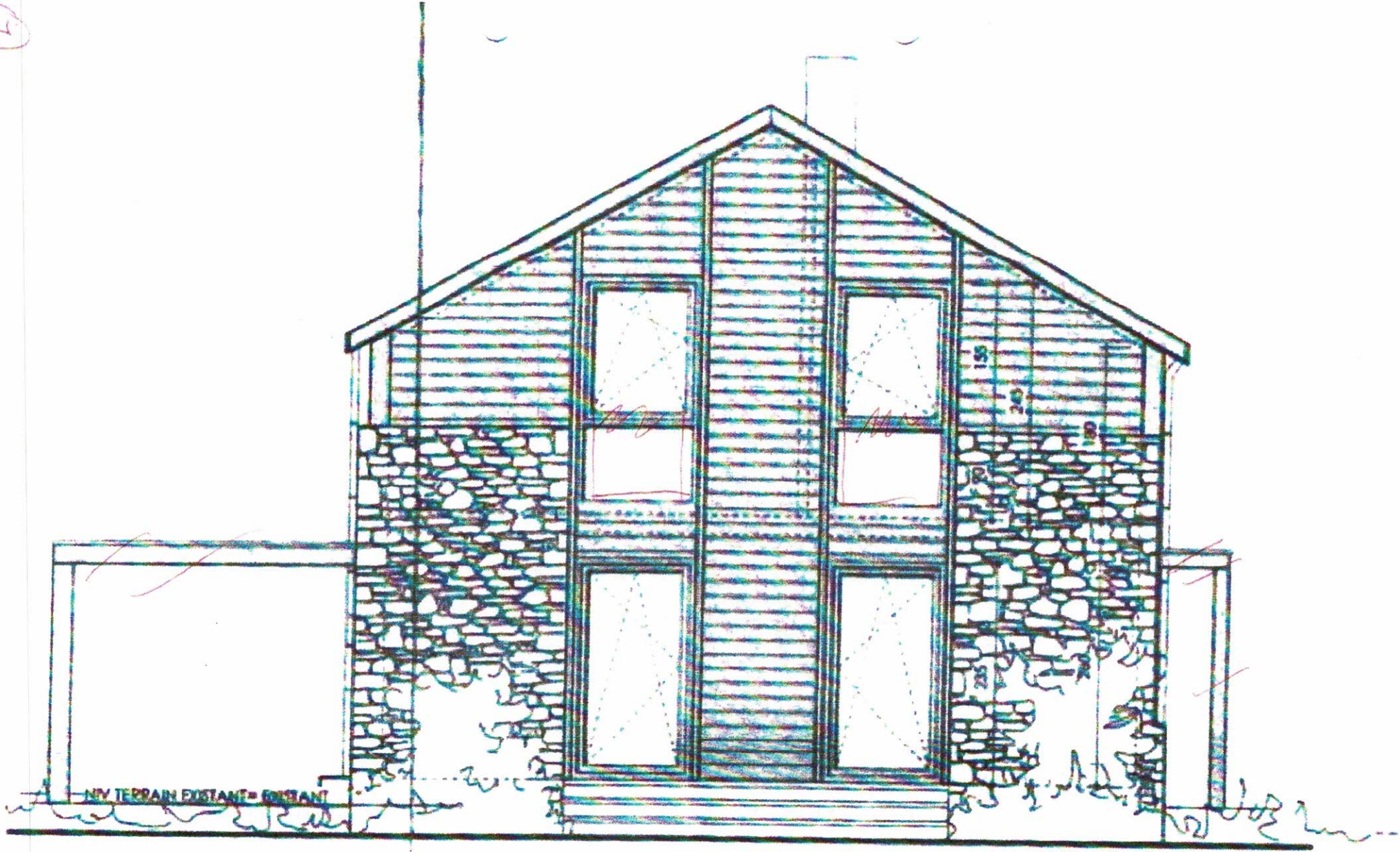
425

9



SUD - OUEST

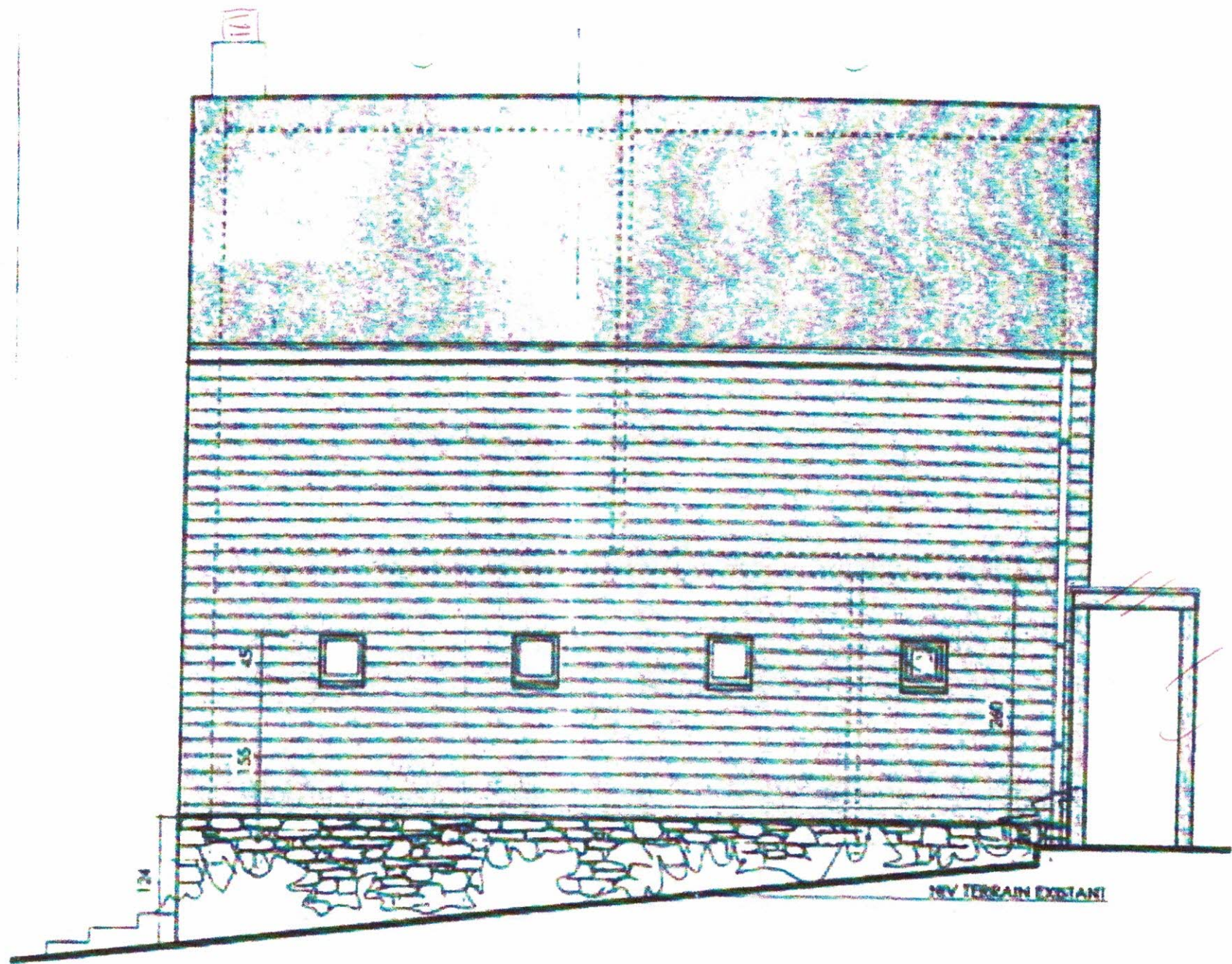
1



NOUVEAU TERRAIN EXISTANT = EXISTANT

NORD = EST

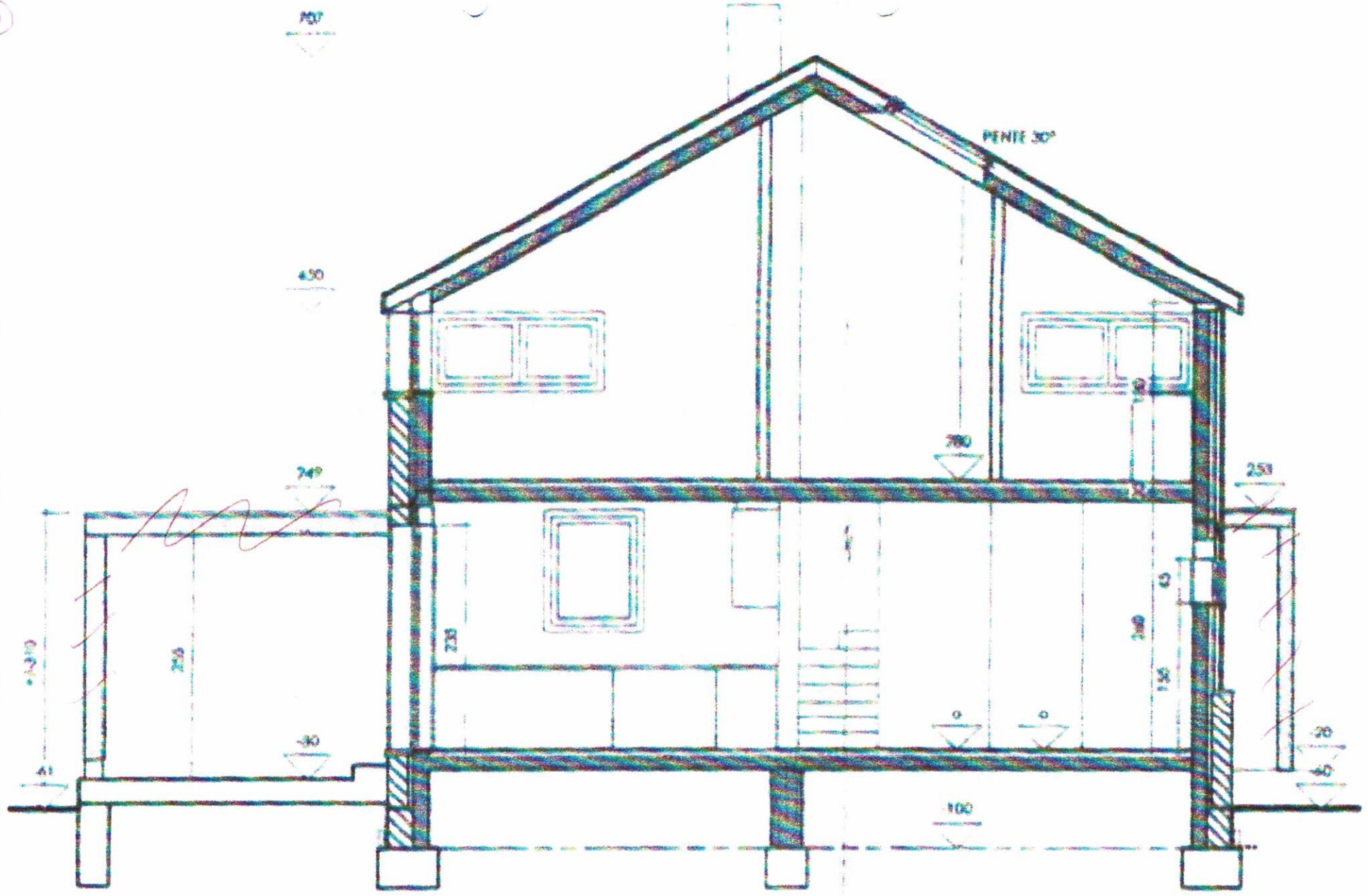
8



NORD - OUEST

NIV TERRAIN EXISTANT

9



COUPE A-B