

**Royalton
Group**

Real Estate Developers

www.royaltongroup.be

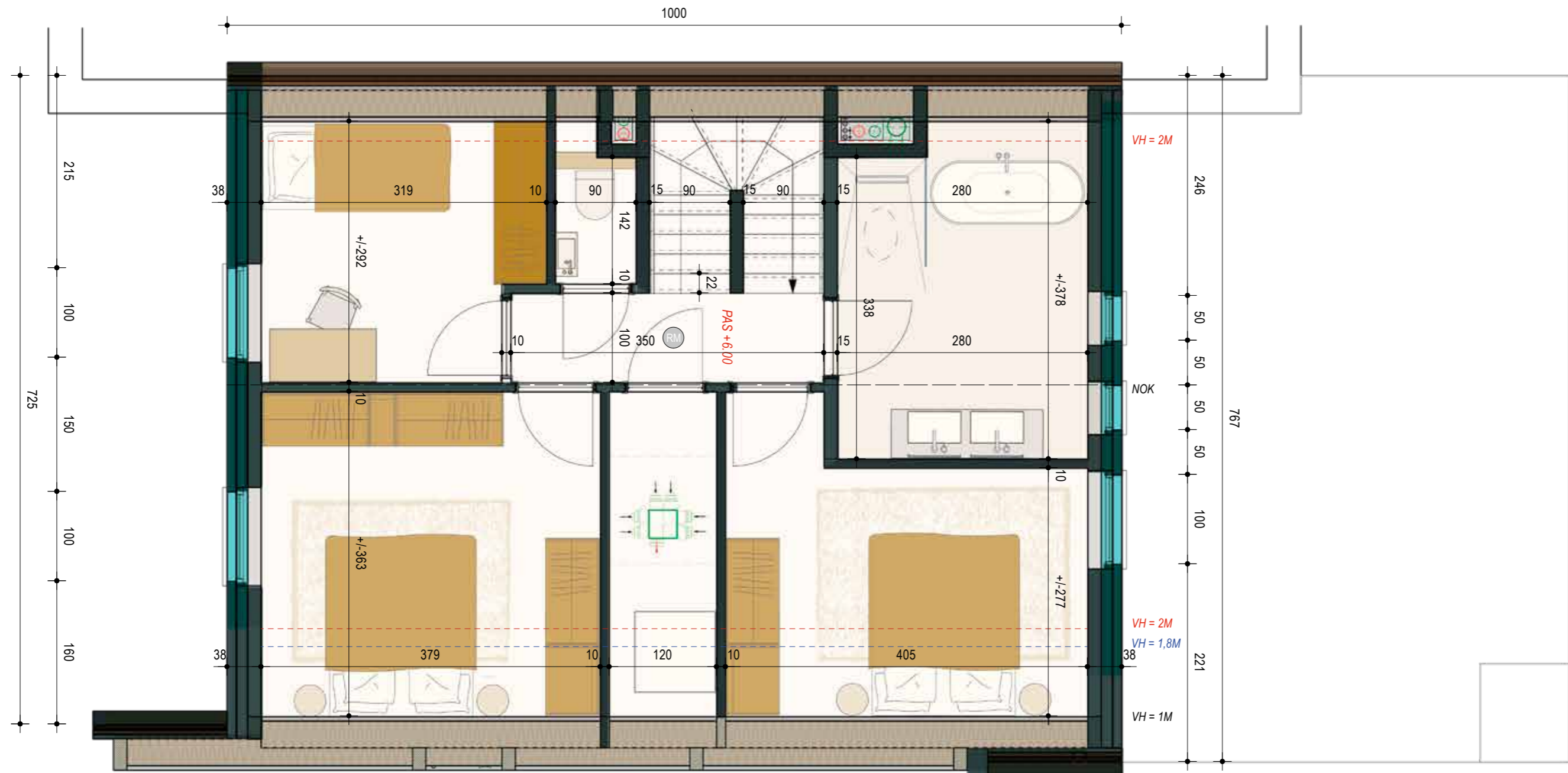
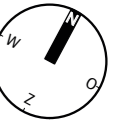


Belétage D1.8

verdieping 1 & 2 (blad 1)

bruto oppervlakte 138,7 m² • terras 27,8 m²

3 slaapkamers • 1 badkamer • 2 toiletten



**Royalton
Group**

Real Estate Developers

www.royaltongroup.be



Belétage D1.8

verdieping 1 & 2 (blad 2)

bruto oppervlakte 138,7 m² • terras 27,8 m²

3 slaapkamers • 1 badkamer • 2 toiletten