

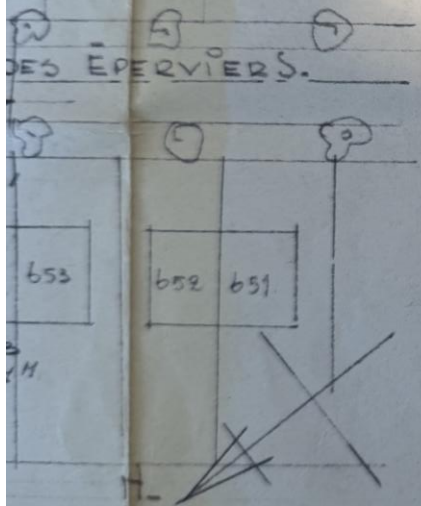
COMMUNE DE WOLUWÉ SAINT-PIERRE  
QUARTIER DE L'EUROPE.

PROPRIÉTÉ DE M<sup>me</sup> JONCKHEERE À ÉRIGER  
AV. DES ÉPERVIERS. LOT N<sup>o</sup> 654.

ÉCHELLE: 1/50<sup>e</sup>.

PLAN JOINT À MA DEMANDE DE BÂTIR EN DATE DU:

PLAN: REZ. BEL-ÉTAGE. ÉTAGE.  
FACADES: RUE. LATÉRALE. JARDIN. COUPE.



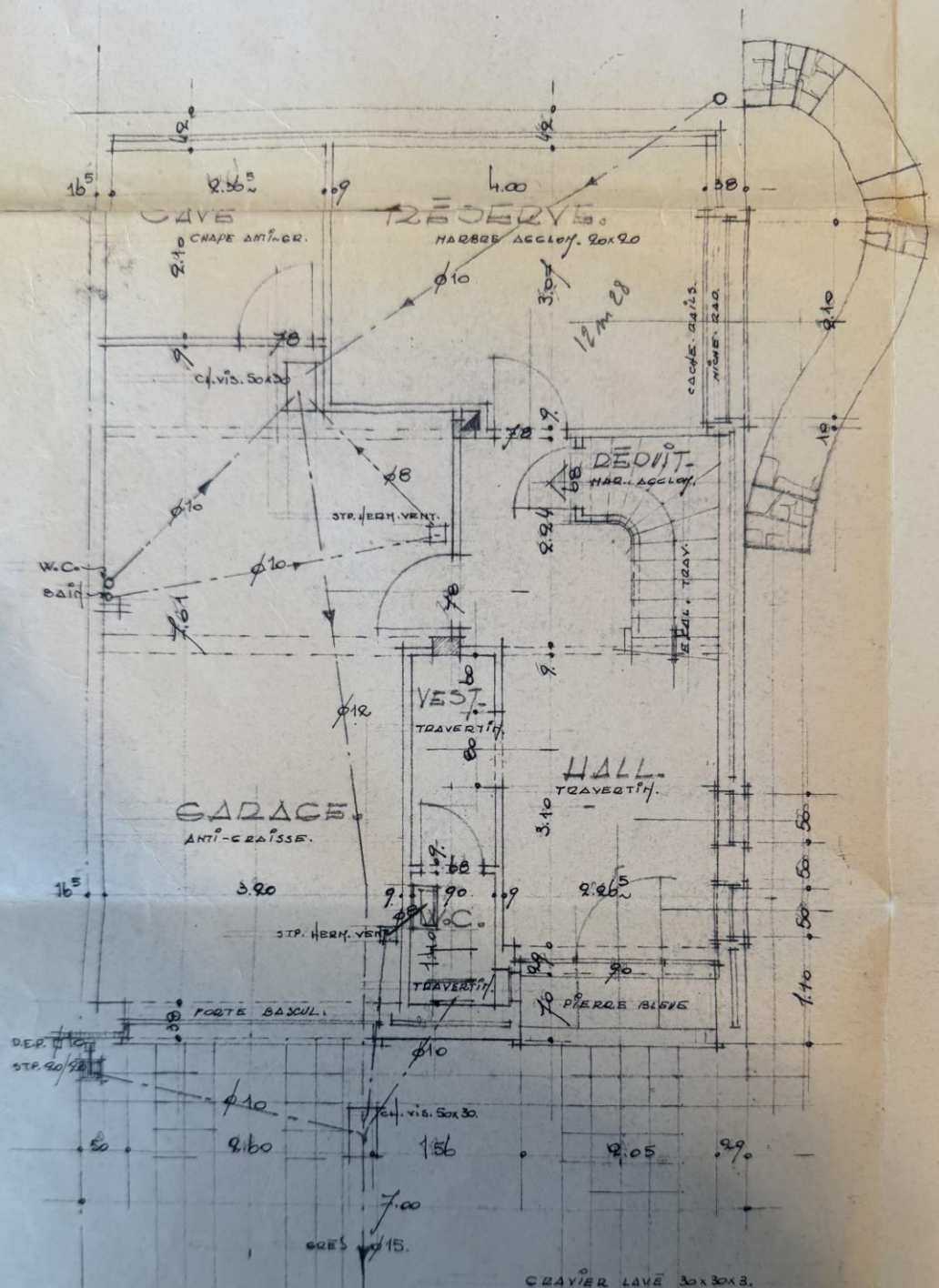
L'ARCHITECTE.  
GROUPE URBANISME S. A.  
Proban<sup>t</sup> n<sup>o</sup> 2310  
représenté par l'Architecte  
Christian VANDER ELST

LE PROPRIÉTAIRE  
M<sup>me</sup> JONCKHEERE  
VU POUR ACCORD  
Bruxelles, le  
Le Propriétaire,

L'ENTREPRENEUR.  
VU POUR ACCORD  
Bruxelles, le 14-1-64

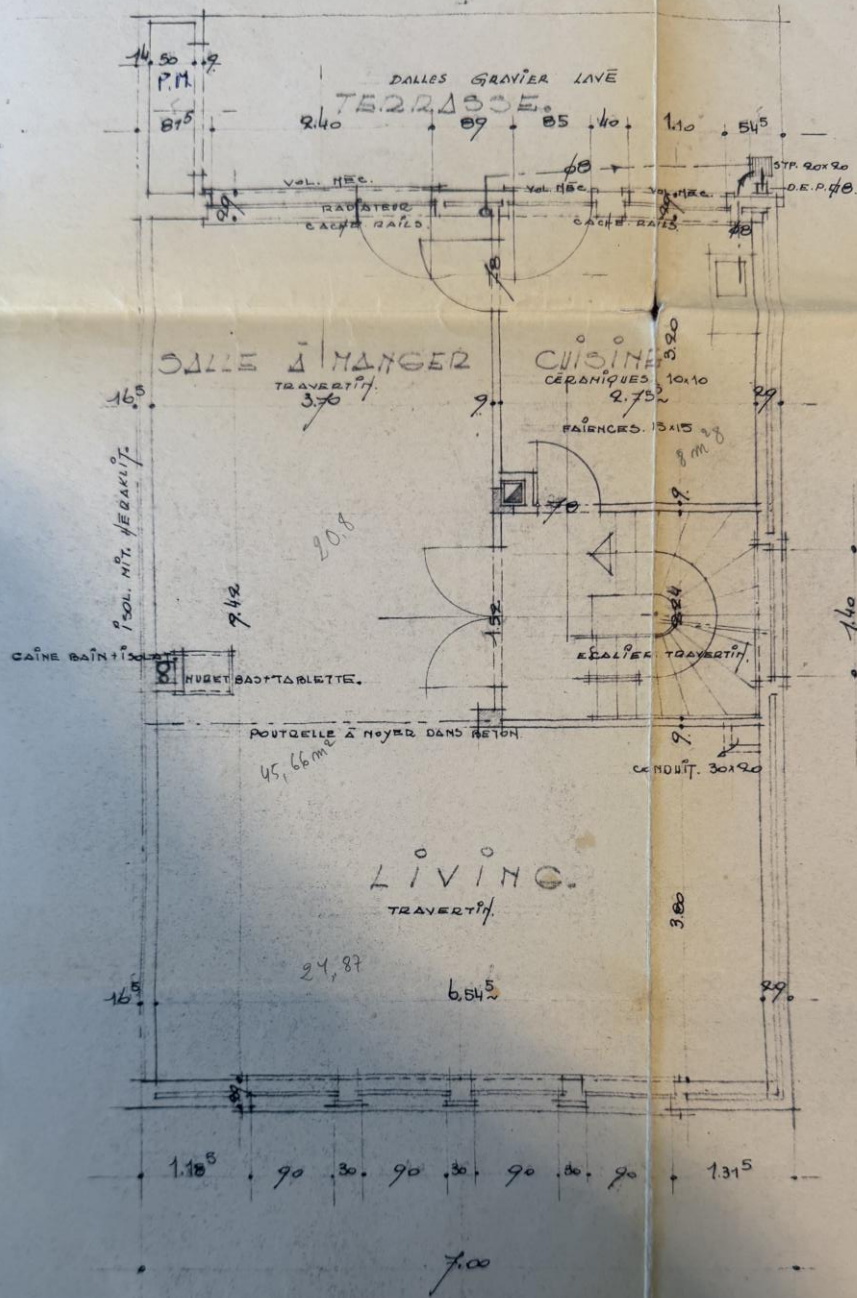
*V. Jonckheere*

*J. Beech*



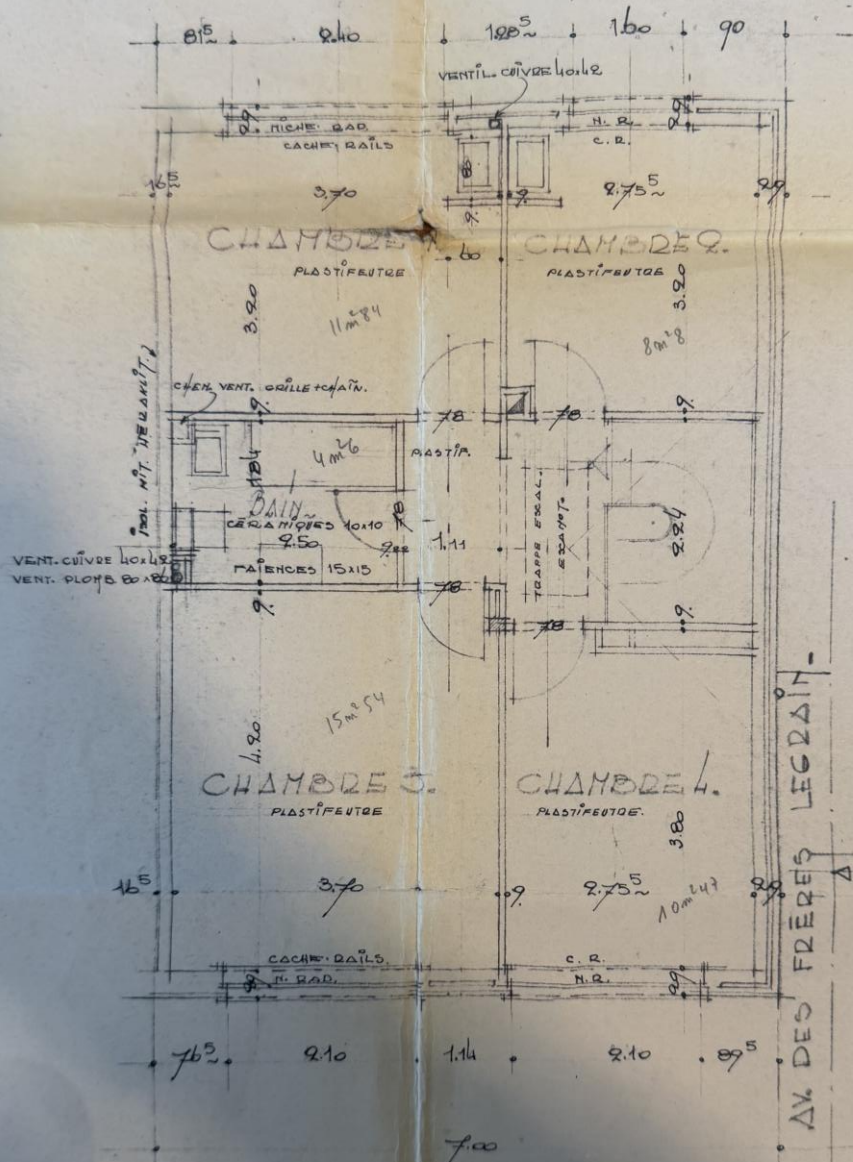
DEZ-DE-CHASSIS.

# FACADE LATÉRALE.



# DEL ÉTAGE.

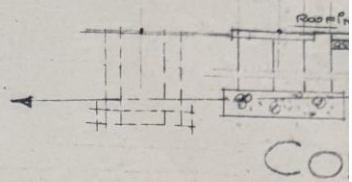
# FAÇADE JARDIN.

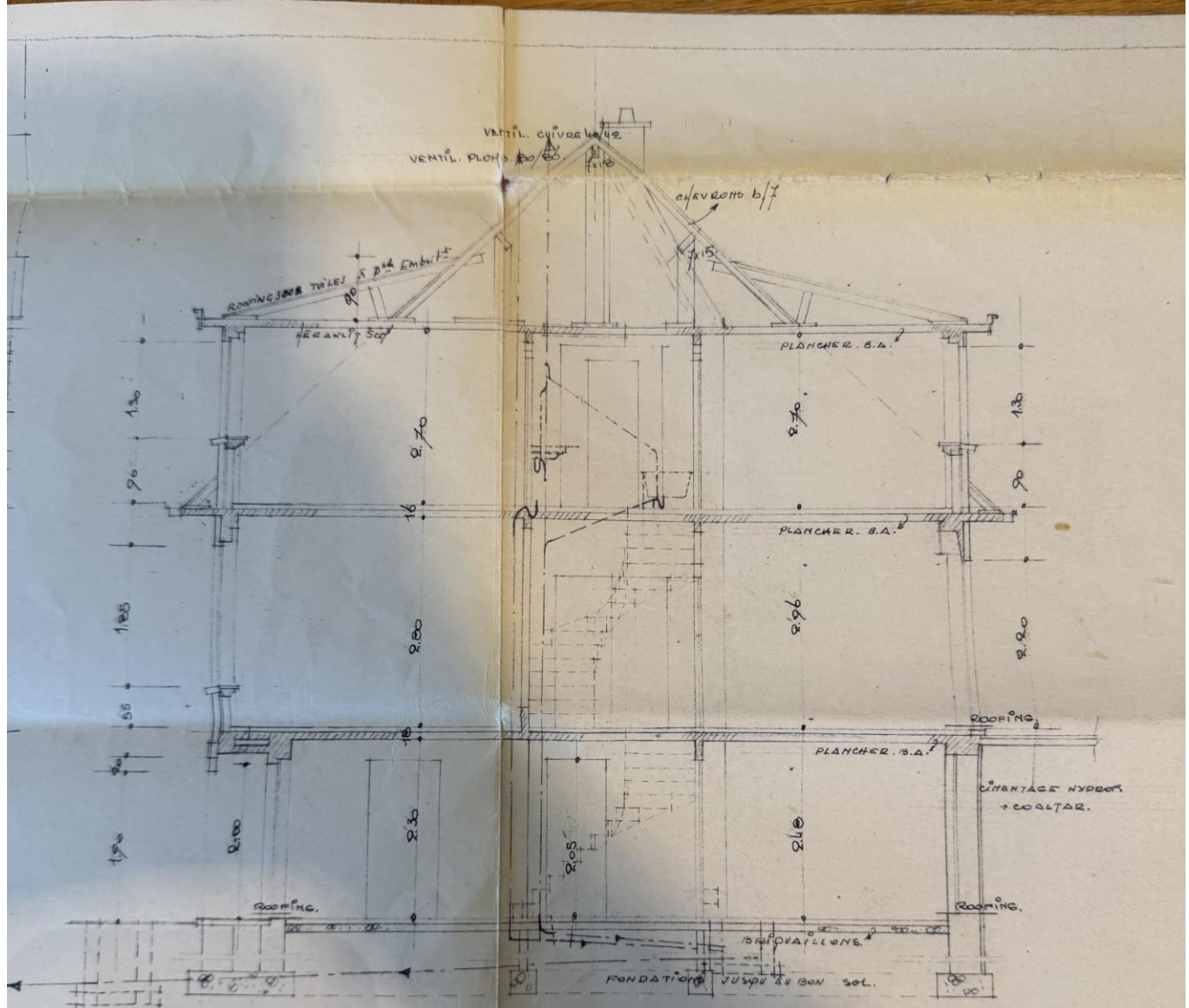


32  
54  
46

SITUATION

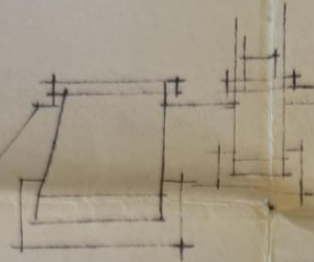
ÉTAGE.





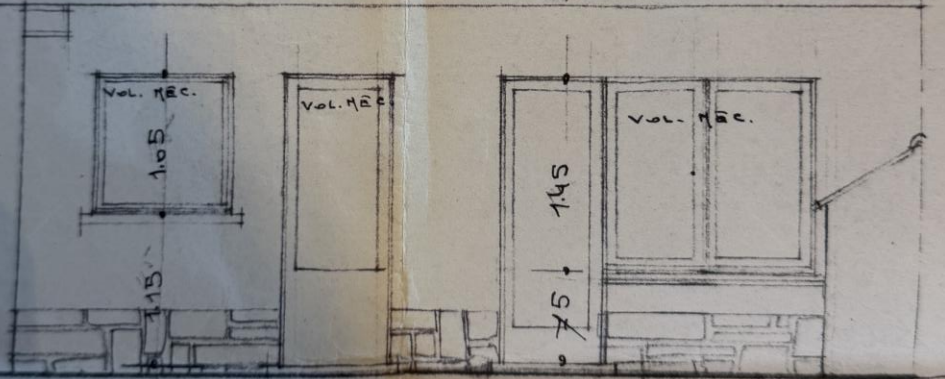
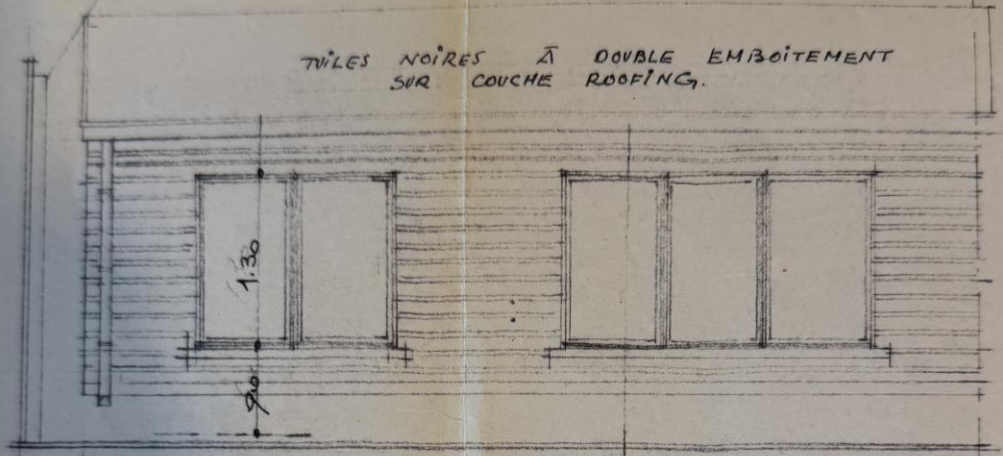
COIPE LONGITUDINALE.

COMMUNE DE WOLUWÉ SAINT-PIERRE  
 QUARTIER DE L'EUROPE.

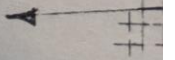


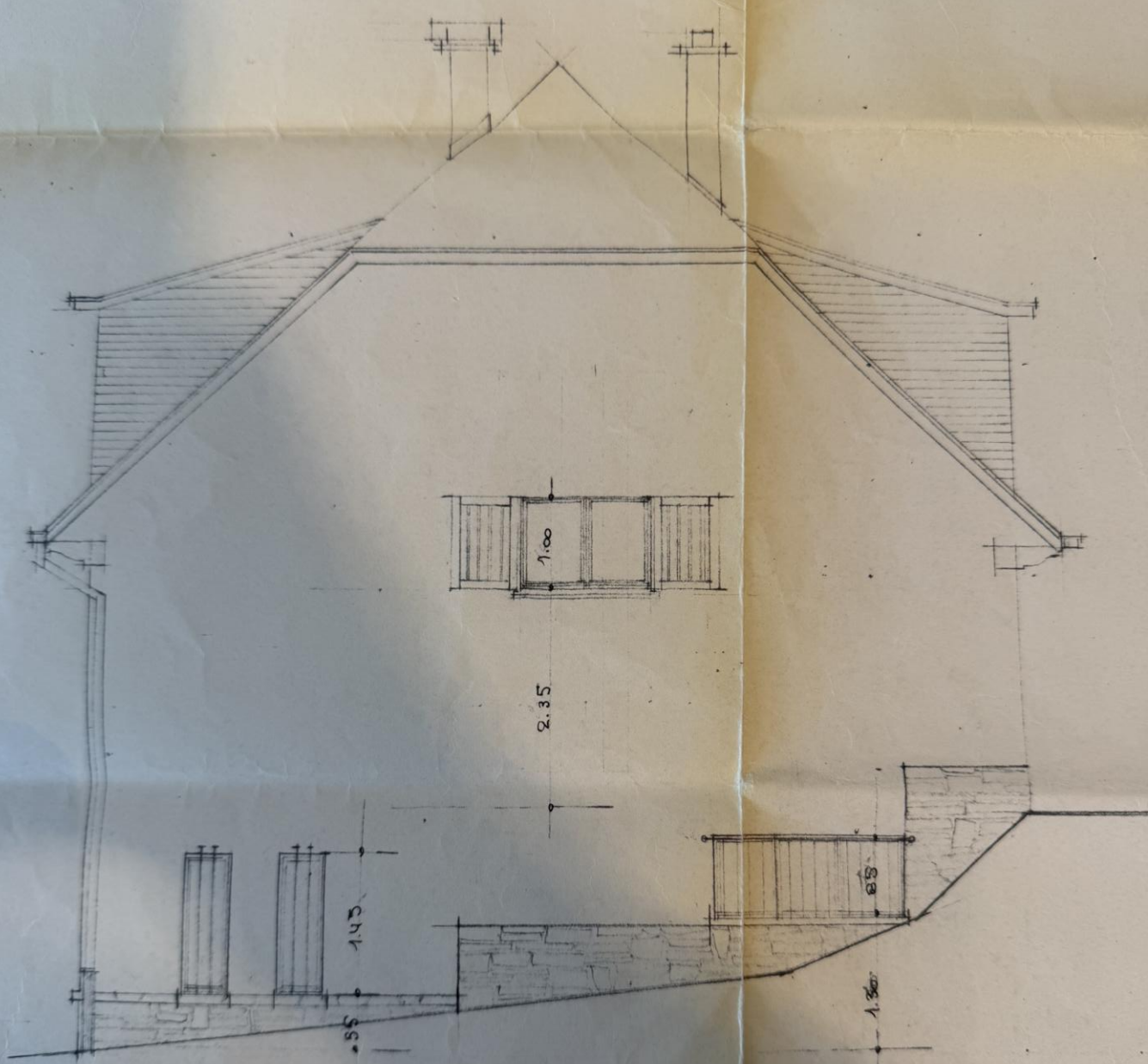
TUILES NOIRES

TUILES NOIRES À DOUBLE EMBOÏTEMENT  
SUR COUCHE ROOFING.

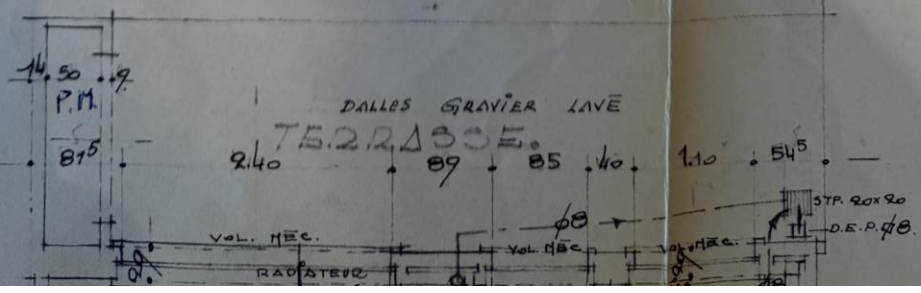


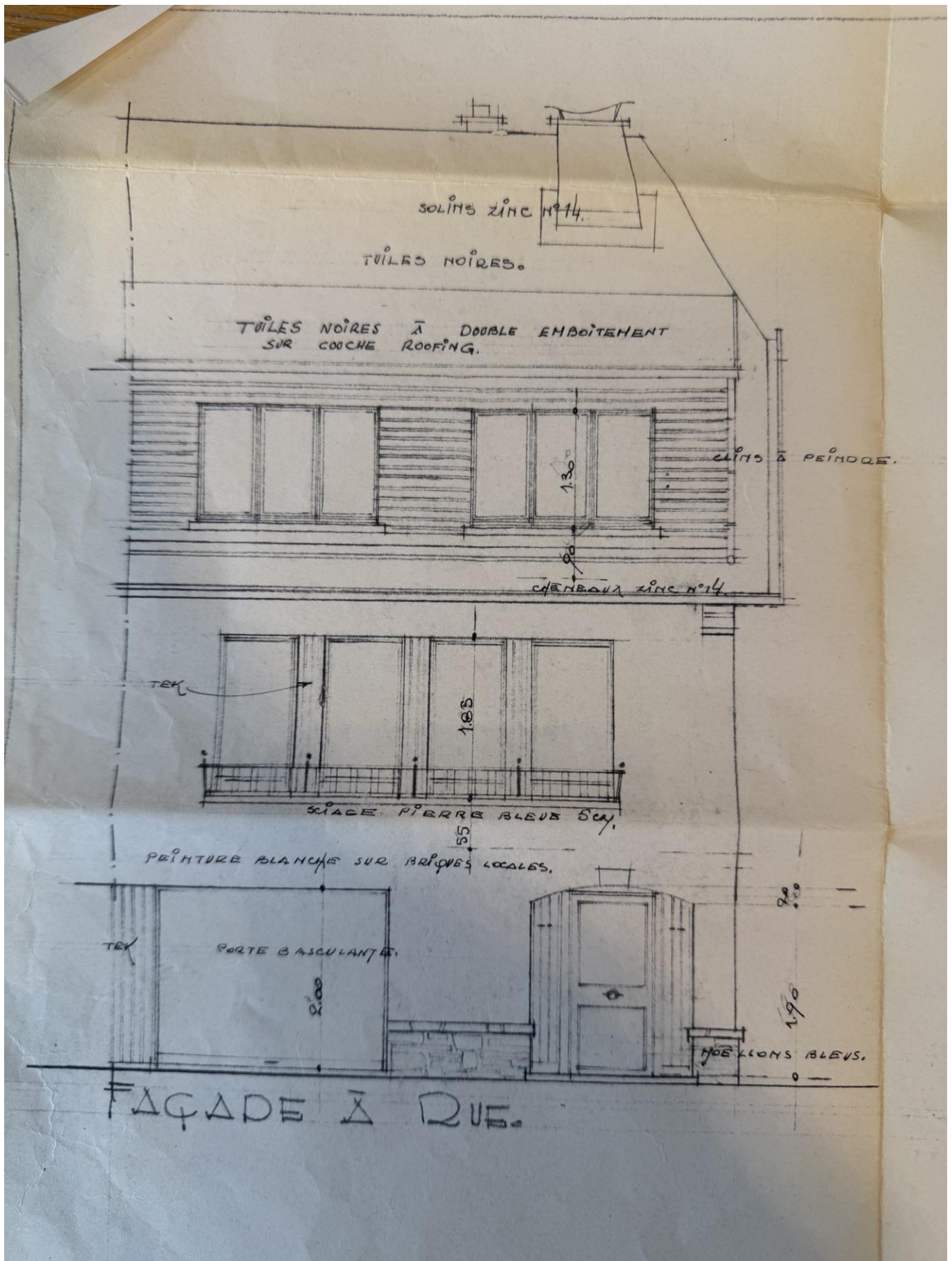
FAÇADE JARDIN

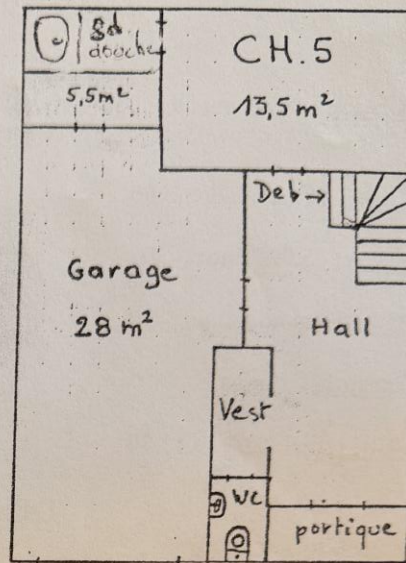
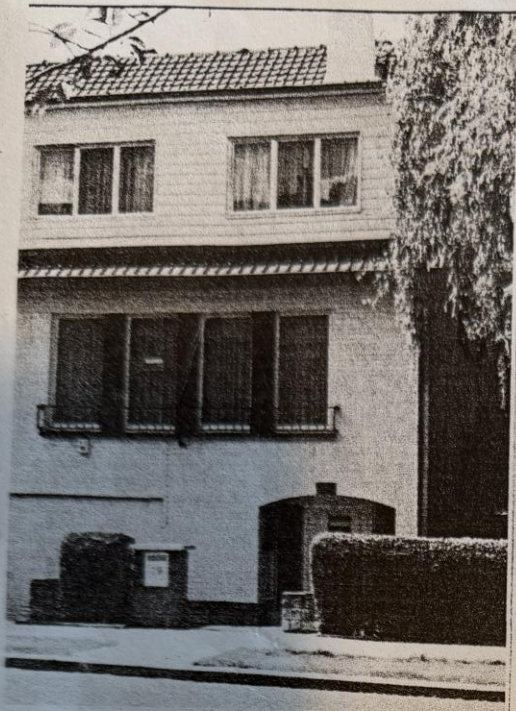




FACADE LATÉRALE.

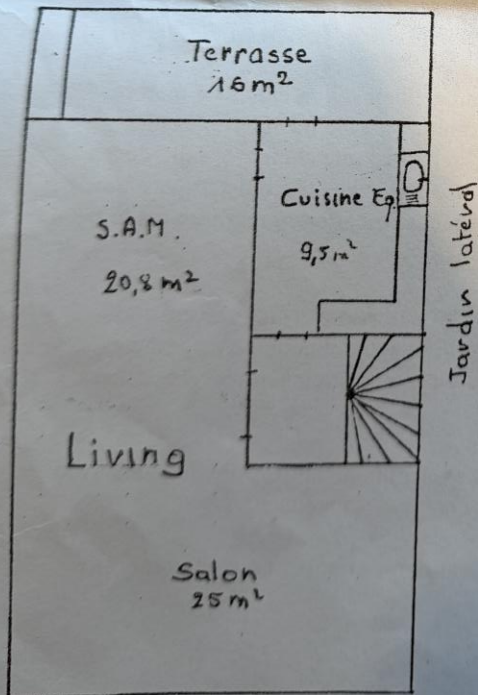




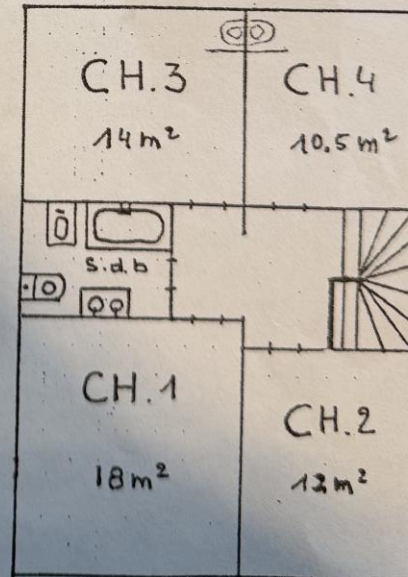


Rez-de-Chaussée

Jardin 100m<sup>2</sup>(±)



Bel-Etage



Etage