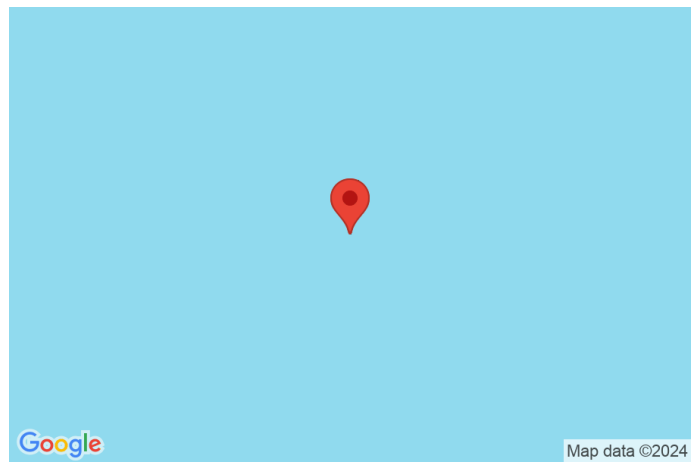


s23073

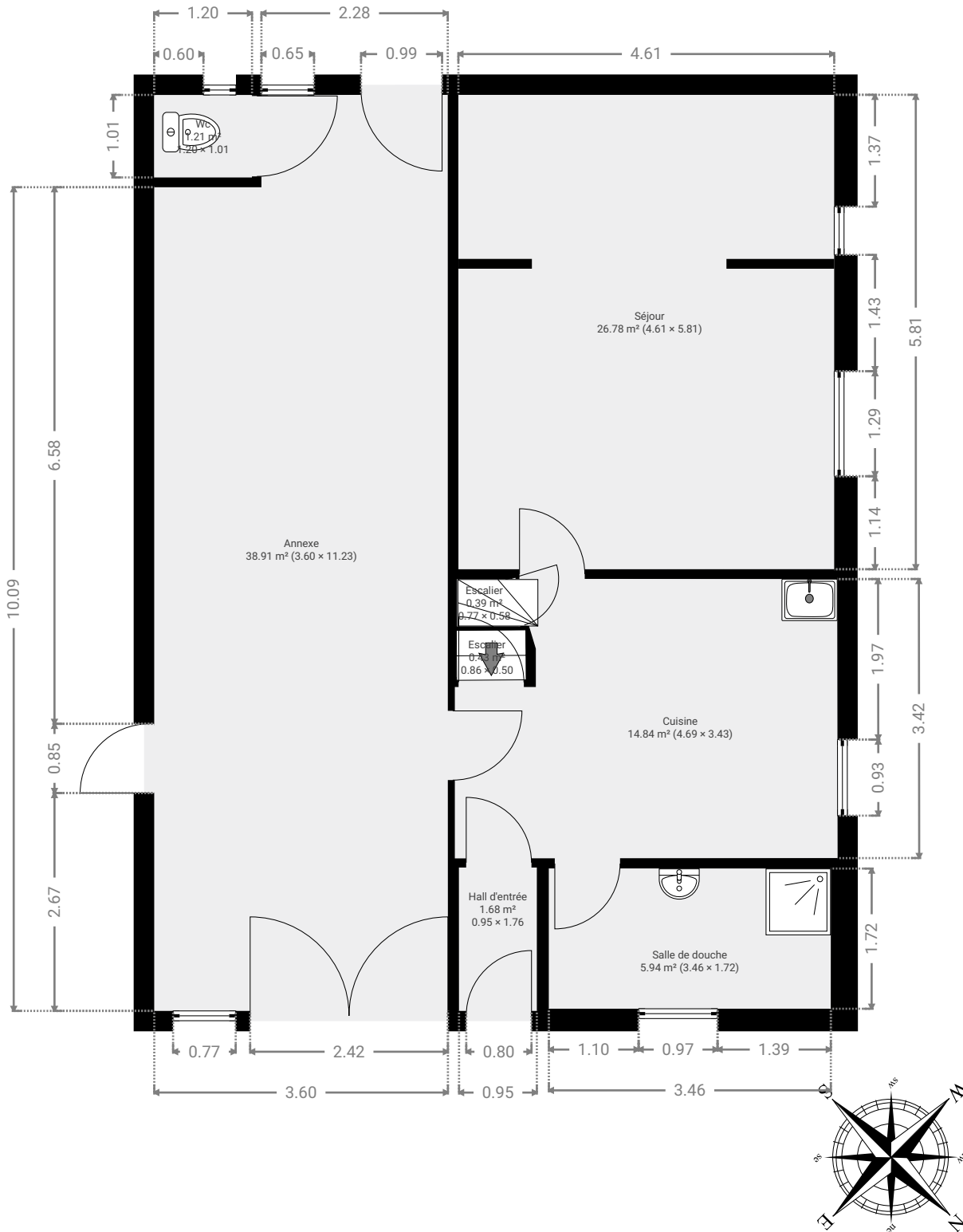
CRÉÉ LE
2024-11-04



Surface totale 240.13 m ²	Étages 4	Pièces 14	Salle de bains 0
--	--------------------	---------------------	----------------------------

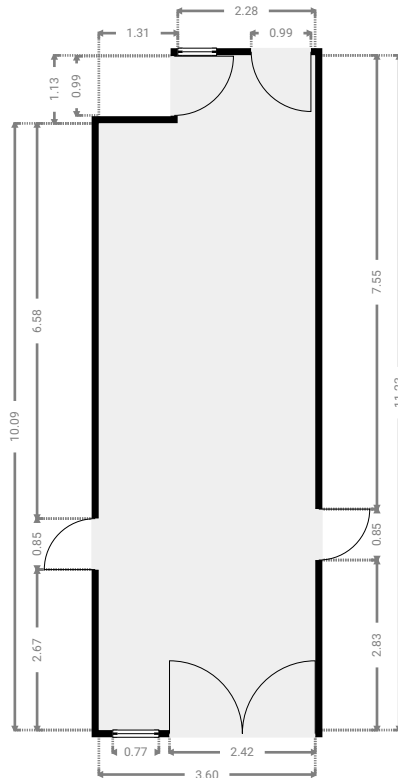
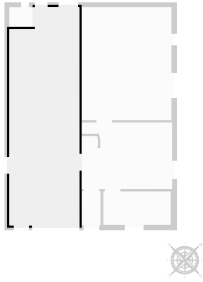
▼ Rez-de-chaussée

SURFACE TOTALE : 90.15 m² • SURFACE HABITABLE : 15.62 m² • PIÈCES : 8



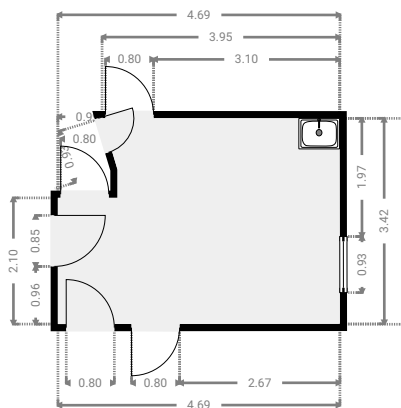
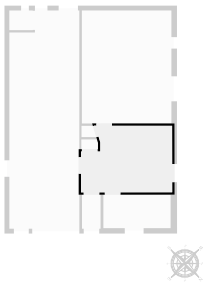
▼ **Annexe**
Rez-de-chaussée

LARGEUR : 3.60 m • LONGUEUR : 11.23 m
SURFACE : 38.91 m² • PÉRIMÈTRE : 29.65 m



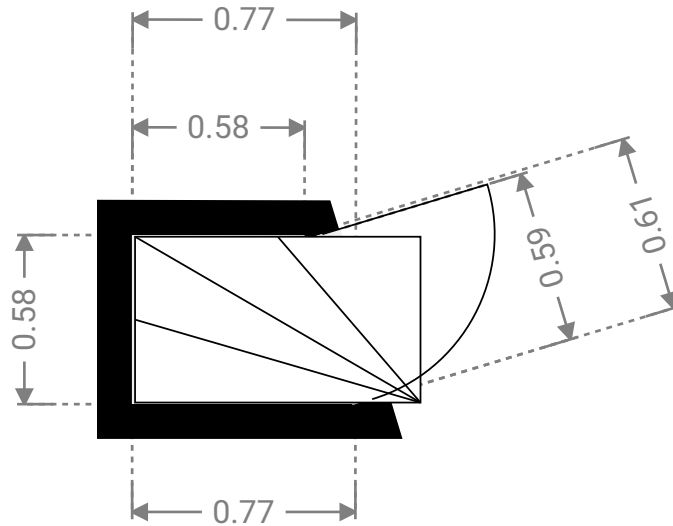
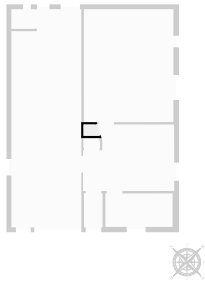
▼ **Cuisine**
Rez-de-chaussée

LARGEUR : 4.69 m • LONGUEUR : 3.43 m
SURFACE : 14.84 m² • PÉRIMÈTRE : 16.52 m



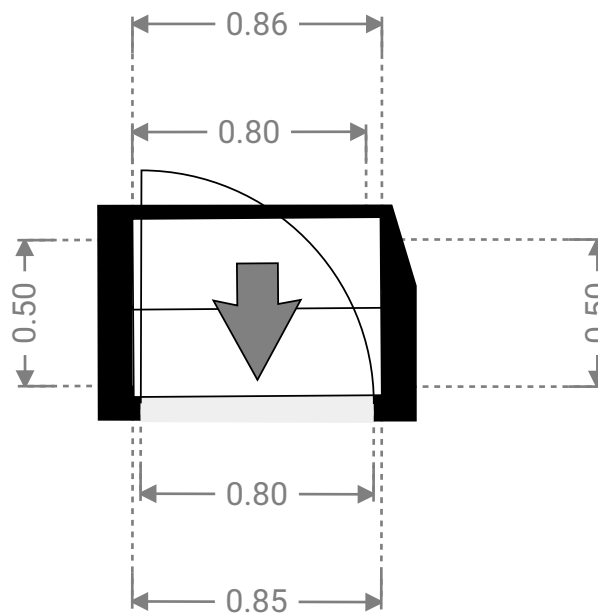
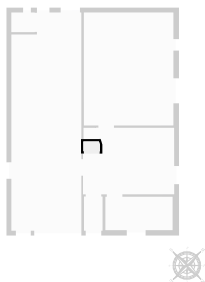
▼ Escalier
Rez-de-chaussée

LARGEUR : 0.77 m • LONGUEUR : 0.58 m
SURFACE : 0.39 m² • PÉRIMÈTRE : 2.54 m



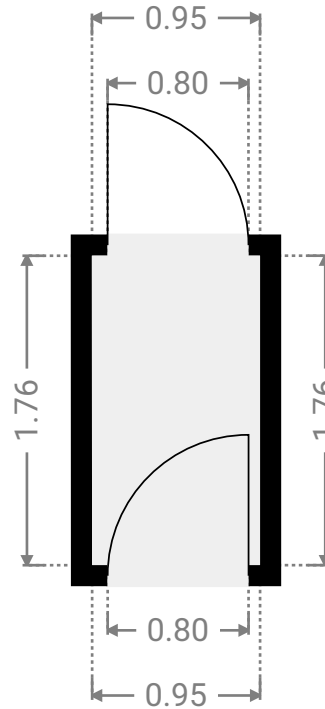
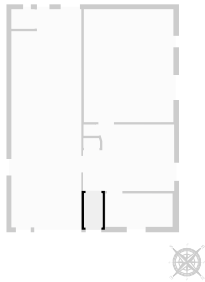
▼ Escalier
Rez-de-chaussée

LARGEUR : 0.86 m • LONGUEUR : 0.50 m
SURFACE : 0.43 m² • PÉRIMÈTRE : 2.67 m



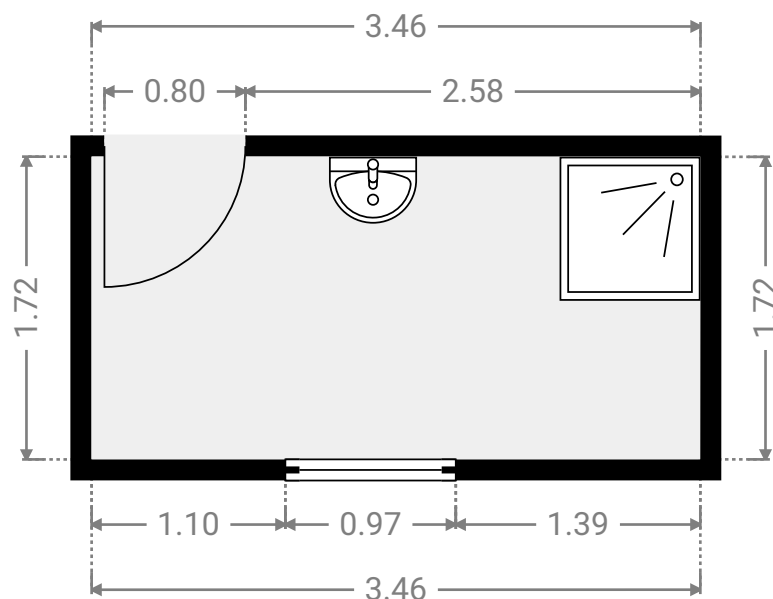
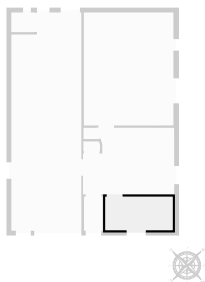
▼ **Hall d'entrée**
Rez-de-chaussée

LARGEUR : 0.95 m • LONGUEUR : 1.76 m
SURFACE : 1.68 m² • PÉRIMÈTRE : 5.42 m



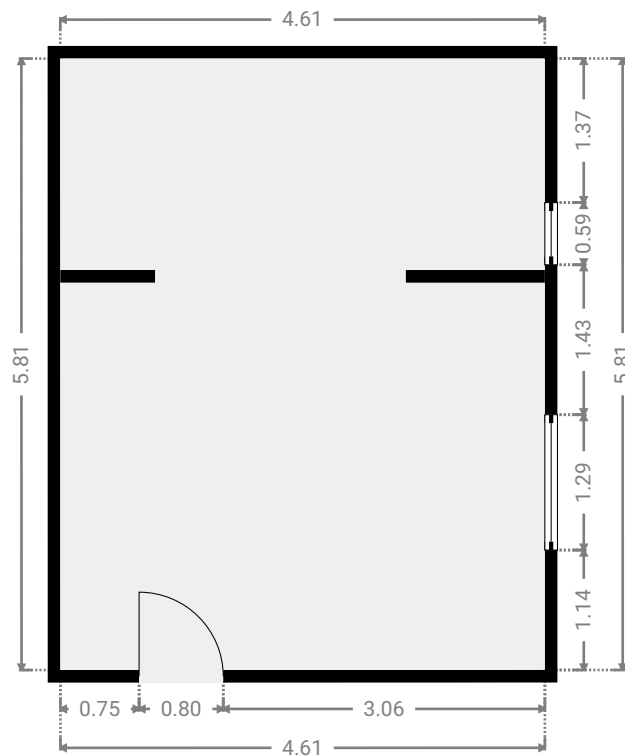
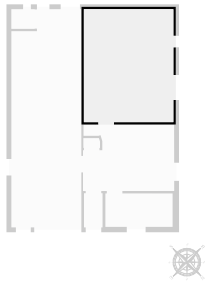
▼ **Salle de douche**
Rez-de-chaussée

LARGEUR : 3.46 m • LONGUEUR : 1.72 m
SURFACE : 5.94 m² • PÉRIMÈTRE : 10.35 m



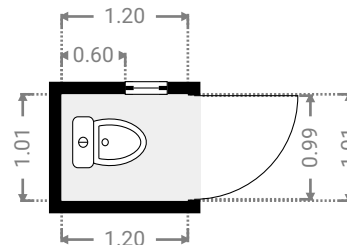
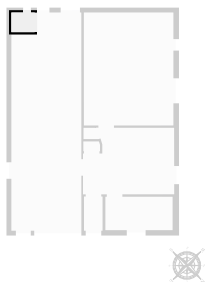
▼ **Séjour**
Rez-de-chaussée

LARGEUR : 4.61 m • LONGUEUR : 5.81 m
SURFACE : 26.78 m² • PÉRIMÈTRE : 20.84 m



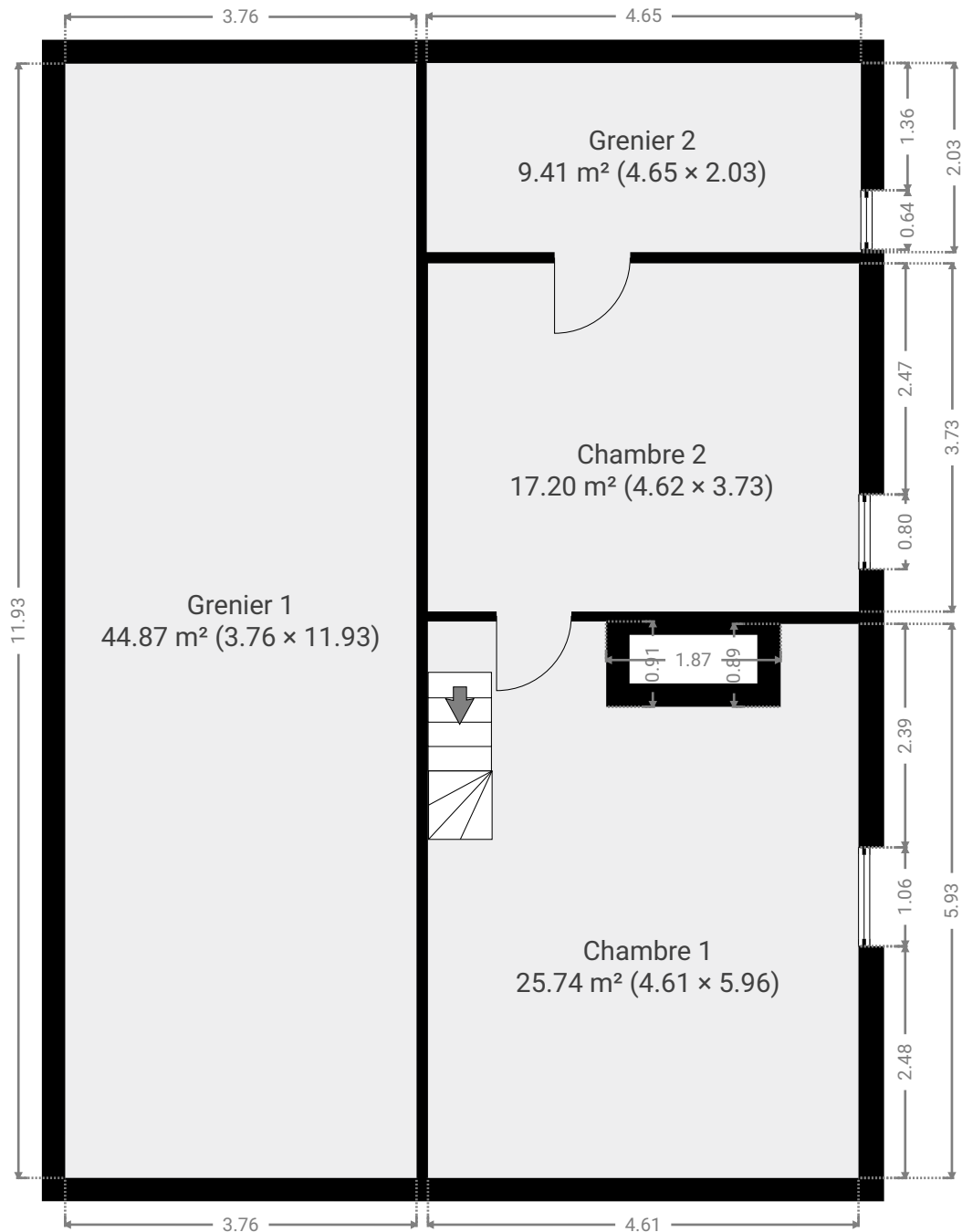
▼ **Wc**
Rez-de-chaussée

LARGEUR : 1.20 m • LONGUEUR : 1.01 m
SURFACE : 1.21 m² • PÉRIMÈTRE : 4.42 m



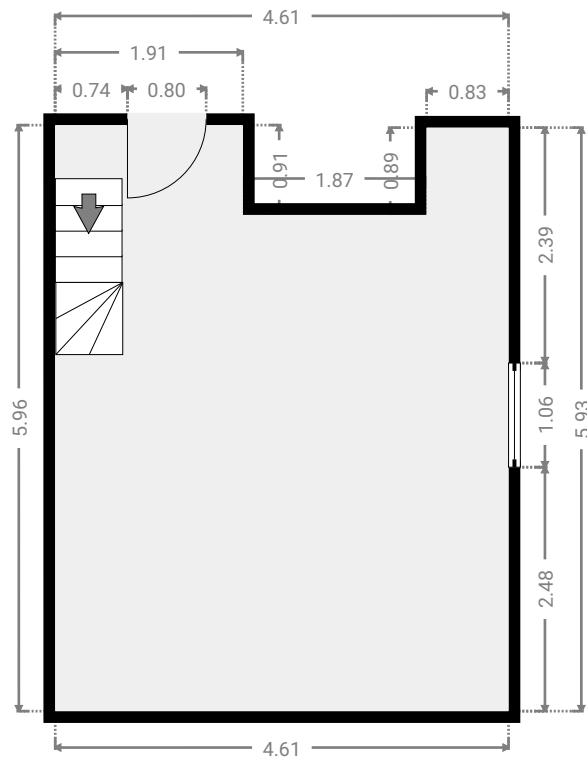
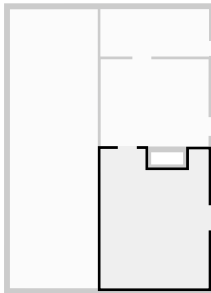
▼ 1er étage

SURFACE TOTALE : 97.19 m² • SURFACE HABITABLE : 42.91 m² • PIÈCES : 4



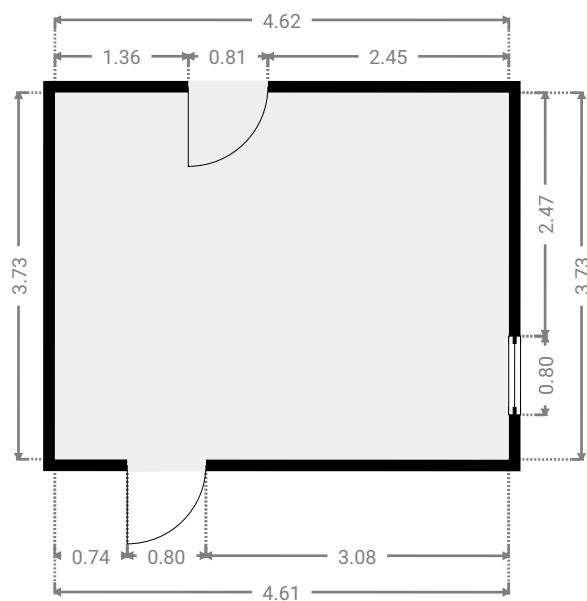
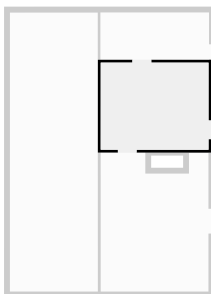
▼ **Chambre 1**
1er étage

LARGEUR : 4.61 m • LONGUEUR : 5.96 m
SURFACE : 25.74 m² • PÉRIMÈTRE : 22.91 m



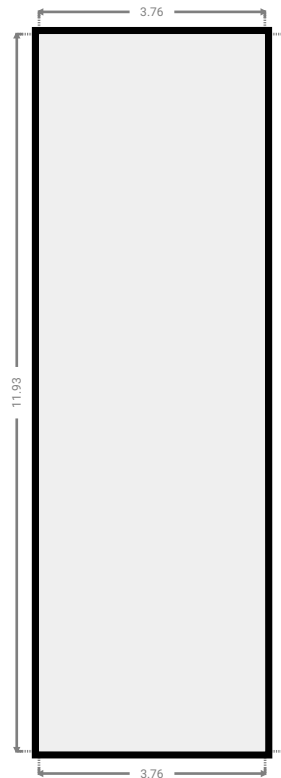
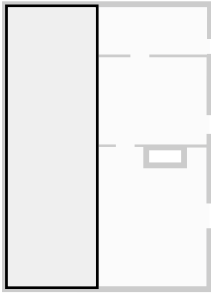
▼ **Chambre 2**
1er étage

LARGEUR : 4.62 m • LONGUEUR : 3.73 m
SURFACE : 17.20 m² • PÉRIMÈTRE : 16.69 m



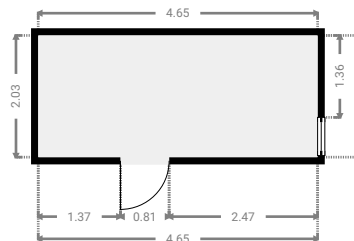
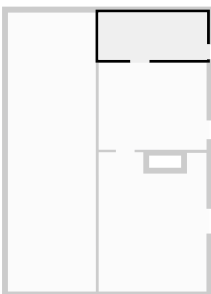
▼ **Grenier 1**
1er étage

LARGEUR : 3.76 m • LONGUEUR : 11.93 m
SURFACE : 44.87 m² • PÉRIMÈTRE : 31.38 m



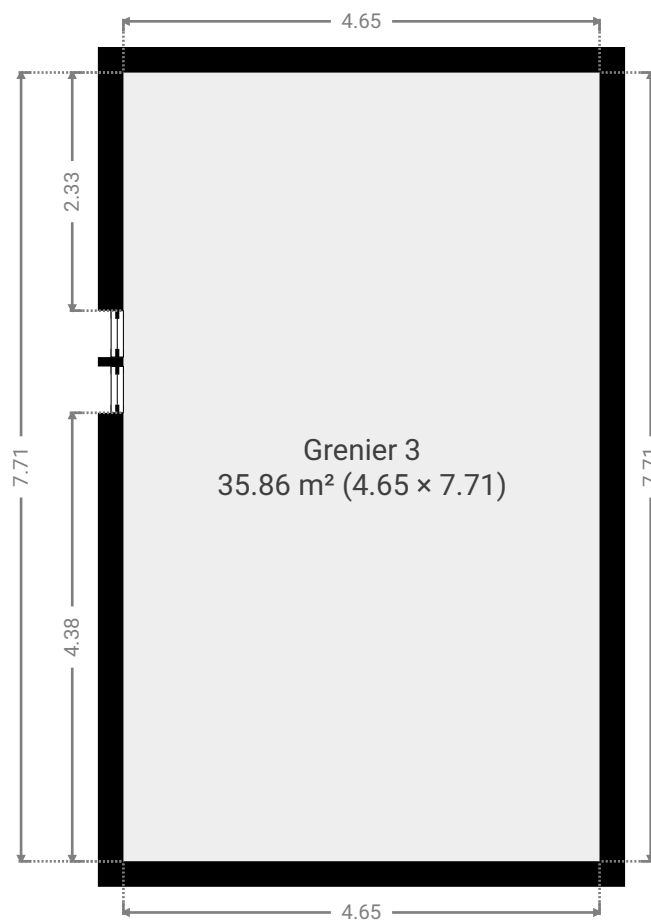
▼ **Grenier 2**
1er étage

LARGEUR : 4.65 m • LONGUEUR : 2.03 m
SURFACE : 9.41 m² • PÉRIMÈTRE : 13.35 m



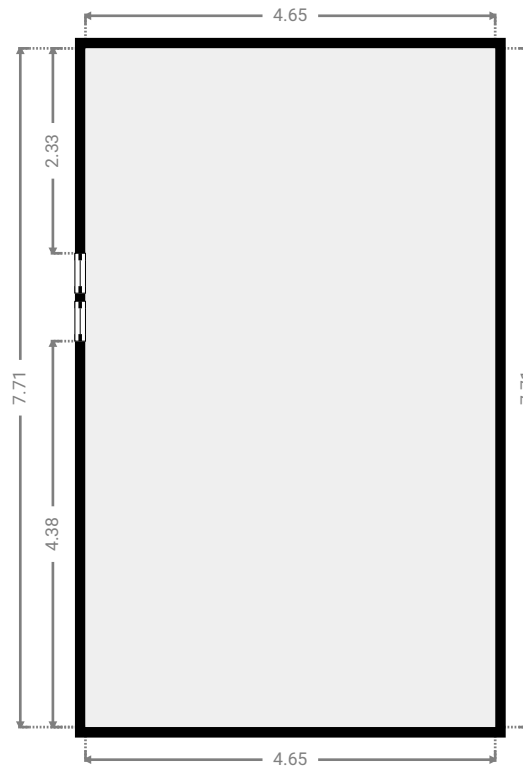
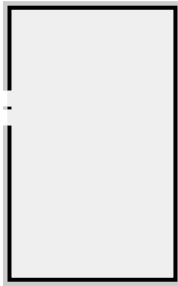
▼ 2e étage

SURFACE TOTALE : 35.85 m² • SURFACE HABITABLE : 0.00 m² • PIÈCES : 1



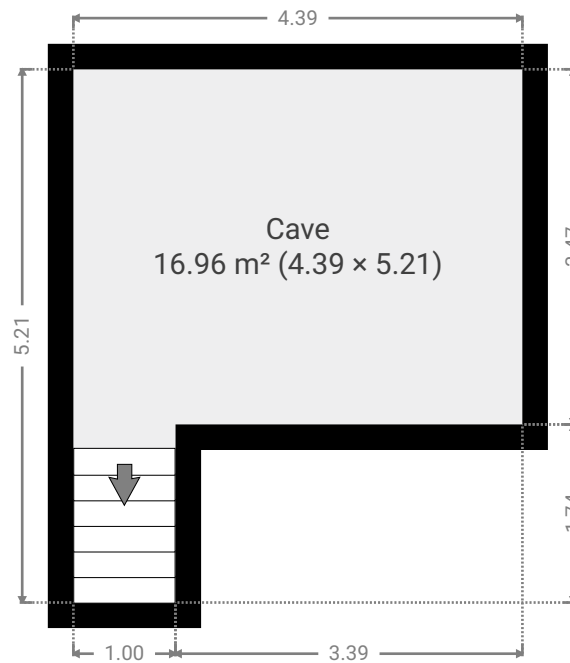
▼ Grenier 3
2e étage

LARGEUR : 4.65 m • LONGUEUR : 7.71 m
SURFACE : 35.86 m² • PÉRIMÈTRE : 24.72 m



▼ Sous-sol

SURFACE TOTALE : 16.95 m² • SURFACE HABITABLE : 0.00 m² • PIÈCES : 1



▼ Cave
Sous-sol

LARGEUR : 4.39 m • LONGUEUR : 5.21 m
SURFACE : 16.96 m² • PÉRIMÈTRE : 19.20 m

