

# The Becerra Dehesa





# Index



Introduction



Location



Land use



Features agrologic



Fauna



Equipment and buildings



Photo Gallery

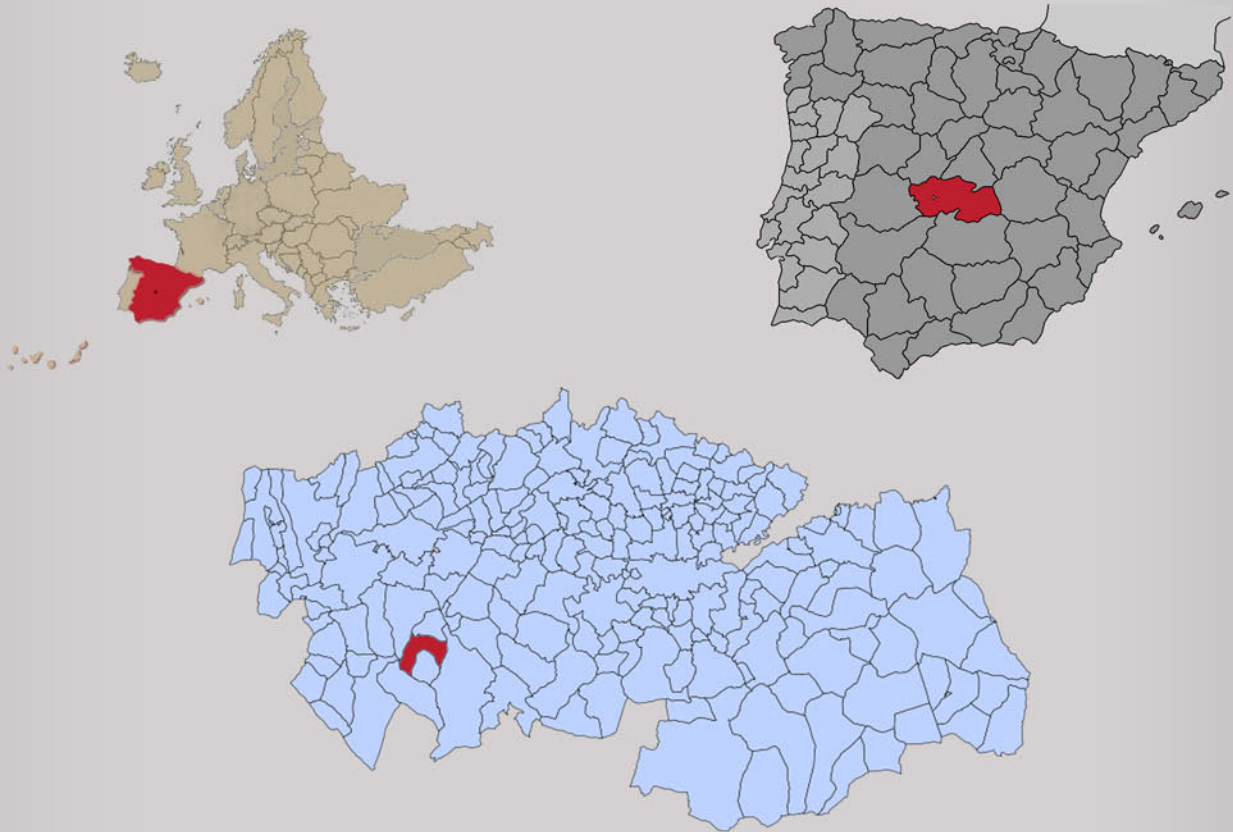


# Introduction

In such an environment is as privileged as the province of Toledo is the property known as "Dehesa the calf" with an area of 1,030 hectares.

Located in the Toledo mountains has an excellent situation and terrain for hunting, agriculture and livestock.

The enviroment in which the property is located is unique about the situation, as well as vegetation, fauna and close to many tourist attractions.





## Location

The Dehesa la Becerra is in the west of the province of Toledo, owned by the municipalities of Torrecilla de la Jara and Retamoso. Located 170 km from Madrid on the Extremadura motorway exit Erustes and about 75 km from Toledo, capital of the Autonomous Government of Castilla la Mancha.

It has its main access via the local road Alcaudete de la Jara to Fresneda.

## Bouendaries

North: of the farm land Castrejon, in the municipality of Retamoso.

West: Thorny local road from the King to Talavera de la Reina and the path of "La Berciosa".

South: Road neighborhood of Robledo del Mazo. East: the private property of residents and Retamoso Torrecilla.

East: the private property of residents and Retamoso Torrecilla.





PARCELA N°9 SUPERFICIE 126.862,02 m<sup>2</sup>

PARCELA N°9 SUPERFICIE 256.284,26 m<sup>2</sup>

PARCELA N°10 SUPERFICIE 406.172,16 m<sup>2</sup>

PARCELA N°11 SUPERFICIE 192.865,83 m<sup>2</sup>

PARCELA N°12 SUPERFICIE 233.630,12 m<sup>2</sup>

PARCELA N°13 SUPERFICIE 802.118,15 m<sup>2</sup>

PARCELA N°14 SUPERFICIE 254.880,47 m<sup>2</sup>

PARCELA N°15 SUPERFICIE 141.688,61 m<sup>2</sup>

PARCELA N°16 SUPERFICIE 7.585,71 m<sup>2</sup>

PARCELA N°17 SUPERFICIE 201.107,03 m<sup>2</sup>

PARCELA N°18 SUPERFICIE 42.823,69 m<sup>2</sup>

PARCELA N°19 SUPERFICIE 209.358,02 m<sup>2</sup>

PARCELA N°20 SUPERFICIE 3.232,50 m<sup>2</sup>

PARCELA N°21 SUPERFICIE 157.888,17 m<sup>2</sup>

PARCELA N°22 SUPERFICIE 977,56 m<sup>2</sup>

PARCELA N°23 SUPERFICIE 358.074,80 m<sup>2</sup>

PARCELA N°24 SUPERFICIE 42.286,34 m<sup>2</sup>

PARCELA N°25 SUPERFICIE 35.704,12 m<sup>2</sup>

PARCELA N°26 SUPERFICIE 47.832,49 m<sup>2</sup>

PARCELA N°27 SUPERFICIE 11.432,91 m<sup>2</sup>

PARCELA N°28 SUPERFICIE 55.292,30 m<sup>2</sup>

PARCELA N°29 SUPERFICIE 66.721,39 m<sup>2</sup>

PARCELA N°30 SUPERFICIE 14.858,48 m<sup>2</sup>

PARCELA N°31 SUPERFICIE 38.935,17 m<sup>2</sup>

PARCELA N°32 SUPERFICIE 9.785,22 m<sup>2</sup>

PARCELA N°33 SUPERFICIE 4.330,42 m<sup>2</sup>

PARCELA N°34 SUPERFICIE 14.824,15 m<sup>2</sup>

PARCELA N°35 SUPERFICIE 11.824,15 m<sup>2</sup>

PARCELA N°36 SUPERFICIE 14.858,48 m<sup>2</sup>

PARCELA N°37 SUPERFICIE 1.862,10 m<sup>2</sup>

PARCELA N°38 SUPERFICIE 35.735,85 m<sup>2</sup>

PARCELA N°39 SUPERFICIE 72.607,18 m<sup>2</sup>

PARCELA N°40 SUPERFICIE 67.389,30 m<sup>2</sup>

PARCELA N°41 SUPERFICIE 159.171,10 m<sup>2</sup>

PARCELA N°42 SUPERFICIE 1.773,47 m<sup>2</sup>

PARCELA N°43 SUPERFICIE 14.824,15 m<sup>2</sup>

PARCELA N°44 SUPERFICIE 216.776,62 m<sup>2</sup>

PARCELA N°45 SUPERFICIE 139.471,50 m<sup>2</sup>

PARCELA N°46 SUPERFICIE 55.850,50 m<sup>2</sup>

PARCELA N°47 SUPERFICIE 56.607,33 m<sup>2</sup>

PARCELA N°48 SUPERFICIE 3.246,53 m<sup>2</sup>

PARCELA N°49 SUPERFICIE 226.548,68 m<sup>2</sup>

PARCELA N°50 SUPERFICIE 166.027,37 m<sup>2</sup>

PARCELA N°51 SUPERFICIE 3.064,61 m<sup>2</sup>

PARCELA N°52 SUPERFICIE 9.438,17 m<sup>2</sup>

PARCELA N°53 SUPERFICIE 562.564,81 m<sup>2</sup>

PARCELA N°54 SUPERFICIE 118.246,80 m<sup>2</sup>

PARCELA N°55 SUPERFICIE 1.120.476,63 m<sup>2</sup>

PARCELA N°56 SUPERFICIE 440.451,47 m<sup>2</sup>

PARCELA N°57 SUPERFICIE 440.451,47 m<sup>2</sup>

PARCELA N°58 SUPERFICIE 373.308,37 m<sup>2</sup>

PARCELA N°59 SUPERFICIE 289.438,23 m<sup>2</sup>

PARCELA N°60 SUPERFICIE 1.352,65 m<sup>2</sup>

PARCELA N°61 SUPERFICIE 1.352,65 m<sup>2</sup>

PARCELA N°62 SUPERFICIE 1.352,65 m<sup>2</sup>

PARCELA N°63 SUPERFICIE 1.352,65 m<sup>2</sup>

PARCELA N°64 SUPERFICIE 1.352,65 m<sup>2</sup>

PARCELA N°65 SUPERFICIE 1.352,65 m<sup>2</sup>

PARCELA N°66 SUPERFICIE 1.352,65 m<sup>2</sup>

PARCELA N°67 SUPERFICIE 1.352,65 m<sup>2</sup>

PARCELA N°68 SUPERFICIE 1.352,65 m<sup>2</sup>

PARCELA N°69 SUPERFICIE 1.352,65 m<sup>2</sup>

PARCELA N°70 SUPERFICIE 1.352,65 m<sup>2</sup>

PARCELA N°71 SUPERFICIE 1.352,65 m<sup>2</sup>

PARCELA N°72 SUPERFICIE 1.352,65 m<sup>2</sup>

PARCELA N°73 SUPERFICIE 1.352,65 m<sup>2</sup>

PARCELA N°74 SUPERFICIE 1.352,65 m<sup>2</sup>

PARCELA N°75 SUPERFICIE 1.352,65 m<sup>2</sup>

PARCELA N°76 SUPERFICIE 1.352,65 m<sup>2</sup>

PARCELA N°77 SUPERFICIE 1.352,65 m<sup>2</sup>

PARCELA N°78 SUPERFICIE 1.352,65 m<sup>2</sup>

PARCELA N°79 SUPERFICIE 1.352,65 m<sup>2</sup>

PARCELA N°80 SUPERFICIE 1.352,65 m<sup>2</sup>

PARCELA N°81 SUPERFICIE 1.352,65 m<sup>2</sup>

PARCELA N°82 SUPERFICIE 1.352,65 m<sup>2</sup>

PARCELA N°83 SUPERFICIE 1.352,65 m<sup>2</sup>

PARCELA N°84 SUPERFICIE 1.352,65 m<sup>2</sup>

PARCELA N°85 SUPERFICIE 1.352,65 m<sup>2</sup>

PARCELA N°86 SUPERFICIE 1.352,65 m<sup>2</sup>

PARCELA N°87 SUPERFICIE 1.352,65 m<sup>2</sup>

PARCELA N°88 SUPERFICIE 1.352,65 m<sup>2</sup>

PARCELA N°89 SUPERFICIE 1.352,65 m<sup>2</sup>

PARCELA N°90 SUPERFICIE 1.352,65 m<sup>2</sup>

PARCELA N°91 SUPERFICIE 1.352,65 m<sup>2</sup>

PARCELA N°92 SUPERFICIE 1.352,65 m<sup>2</sup>

PARCELA N°93 SUPERFICIE 1.352,65 m<sup>2</sup>

PARCELA N°94 SUPERFICIE 1.352,65 m<sup>2</sup>

PARCELA N°95 SUPERFICIE 1.352,65 m<sup>2</sup>

PARCELA N°96 SUPERFICIE 1.352,65 m<sup>2</sup>

PARCELA N°97 SUPERFICIE 1.352,65 m<sup>2</sup>

PARCELA N°98 SUPERFICIE 1.352,65 m<sup>2</sup>

PARCELA N°99 SUPERFICIE 1.352,65 m<sup>2</sup>

PARCELA N°100 SUPERFICIE 1.352,65 m<sup>2</sup>

FINCA "LA BECERRA"

LEYENDA

- LINEA
- LIMITES PARCELA
- BOVEDA
- BOVEDA
- LIMITES PARCELA
- LIMITES PARCELA
- TERRA CULTIVO
- MONTAÑA
- CLASIFICACION
- CLASIFICACION
- CLASIFICACION

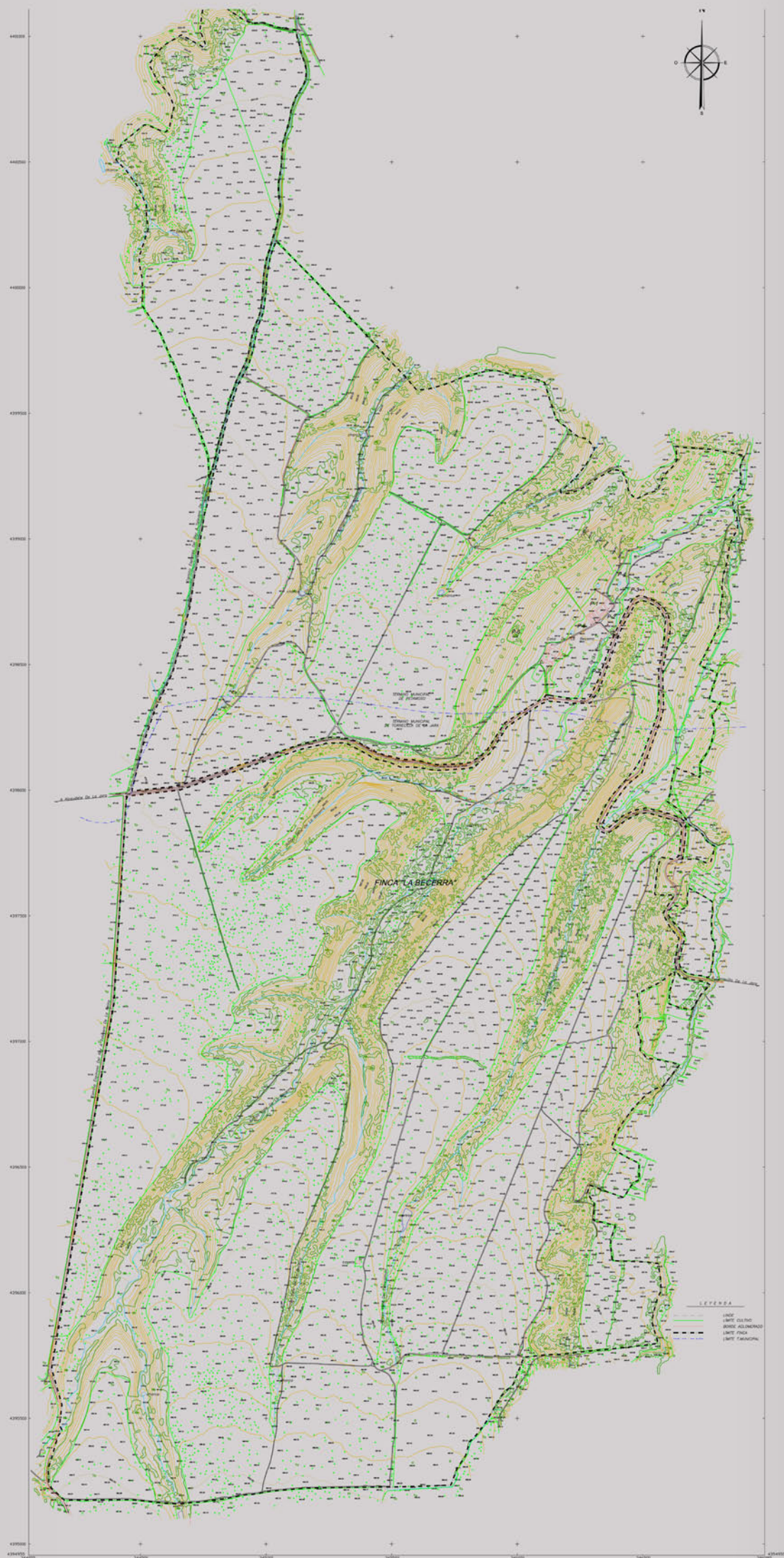
PARCELA	SUPERFICIE
P.1	5.688,31 m <sup>2</sup>
P.2	4.688,31 m <sup>2</sup>
P.3	5.688,31 m <sup>2</sup>
P.4	18.024,95 m <sup>2</sup>
P.5	3.688,07 m <sup>2</sup>
P.6	4.204,13 m <sup>2</sup>
P.7	7.101,17 m <sup>2</sup>

**LEYENDA**

	LÍNEA
	LÍMITE PARCELA
	BORDE AGUADERO
	LÍMITE FINCA
	LÍMITE MUNICIPAL
	TERRA CULTIVO
	MONTE BAJO
	OLIVO
	ERVAL



# Location





# Location





## Land Use

It has an area of 1,030 hectares.

685 hectares in Torrecilla de la Jara

345 hectares in Retamoso de la Jara

The length of the perimeter of the property is 19,500 m.

Of the total area of the property:

-590 You have to work on flat surface with dry clay soil and land vega. Crops that are best suited oats, wheat and rye, with a production of 4409 lb / ha.

-46 Olive has a frame 11 x 11 to 4,000 feet with olives a production of 220462 lb per year.

-394 Hectares of forest consisting of oaks, kermes and gall.





### Edafología

The soils in the Preserve Superfoot are the following, as described by FAO, 1974.

**RANKER:** Formed from siliceous materials and a single rather dark surface horizon and high organic matter content, but poorly HUMIDIFIED. Has a limited depth and a high sand content in stony texture are found in higher dimensions.

The area of hillside and valley run, consists of a Cambisol soil type, characterized by having a cambic horizon formed by in situ alteration of minerals in the rock or the materials of this case are Cambisols partida.En calcium -chromic, with a reddish color of the horizon (B). Its texture is clay loam of variable depth and rich in calcium carbonate, which gives an alkaline reaction.

### Orografía Hydrographic

The estate is characterized by the presence of valleys called: Castrejon Valley, Valley of the Calf, White Cliffs Valley, Hip Valley, distributed by the curb and the stream of Becerra, also found ponds, wells, springs and waterholes.





## Features agrologic

## Climatology

The climate effect on biotic and abiotic elements is of such importance that largely determines the functioning of ecosystems.

The data are presented below are related to the meteorological station of Toledo.

Area is characterized by a temperate-continental climate corresponding to a typical Mediterranean, and dry periods between the months of June and September, and a maximum rainfall in the spring and less pronounced in the fall.

The area under consideration would be included within mesomediterranean bioclimatic floor, with rainfall of 650 mm.

The average annual temperature is 64.4 F

The average maximum of 82.4 F

The average minimum 46.4 F

The frost period 4 months 33.4-35.4 "

Average annual ETP 13.7 "

Average annual deficit Average length dry period 5-6 months

Winters are cool, appearing only in January as the month of frost safe and February, March and April as months of frost likely.





# Fauna

## Game species

There are many different species present on the preserve to be an area with ideal conditions for maintaining bird populations and hunting.

Hunted species within the preserve, and which develops the technical plan of hunting are:

### Small Game :

- Rabbit
- Hare
- Partridge Red
- Woodpigeon
- Tórtola
- Thrushes
- Magpie
- Fox
- Pheasant
- Woodcock

All species are traditionally hunted in the area, either in the form of browsing, either by hand or fixed position. Abundant small game in relation to wood pigeons, doves and thrushes.





# Fauna

## Game species

### Big game :

- Corzo
- Deer
- Boar

Highlights in this section to install a perimeter fence approved October 24, 2007 and will affect the management of the box, in relation to the big game. Results of the last hunt on 12 November 2011:

- 69 deer and deer
- 15 boars
- Number of posts 25

Authorization of a hunt and a hook to stalking deer year.

Hunting for deer stalking and deer.

Technical Plan referred to in the release of pheasants and partridges.

Areas unaffected by farm Zepa or Lic.





## Equipment and buildings

It has a warehouse and agricultural machinery of 39370 " with a annexed area of 5905 " workshop.

At the top of the vessel are located two housing with three each bedroom, kitchen and bathroom.

About this facility is for machinery porch with tank for diesel and pre-installation for cold to room quartering camps.

Approved project in Ministry of Environment to bring light to the farm from the village of La Fresneda.





## Photo Gallery





# Photo Gallery





# Photo Gallery





# Photo Gallery





# Photo Gallery





## Photo Gallery

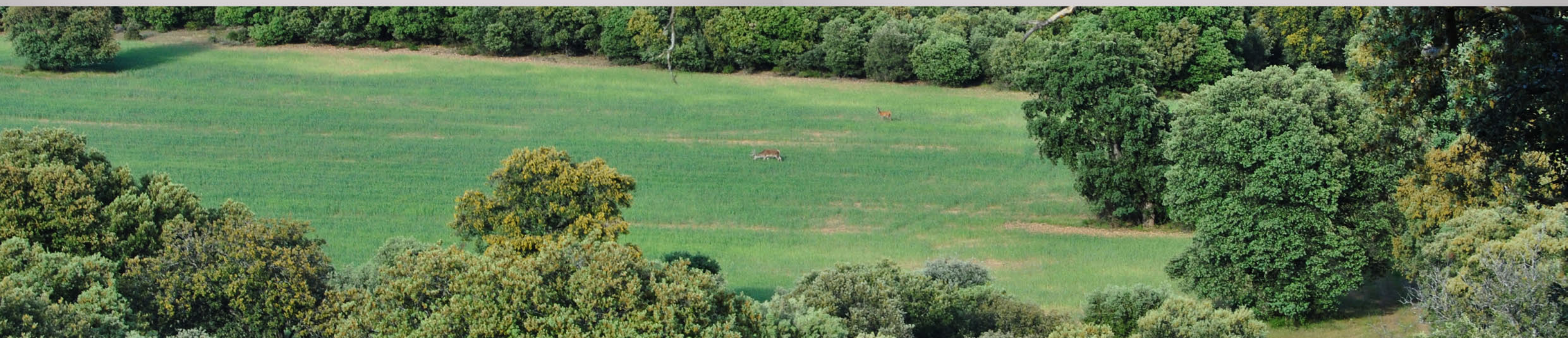
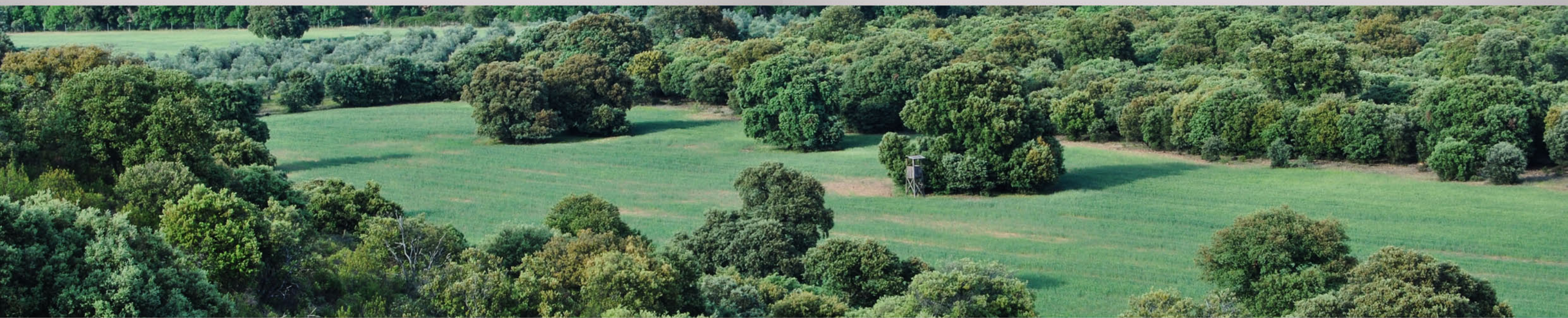


Cinegetic fence detail





# Photo Gallery





## Photo Gallery

