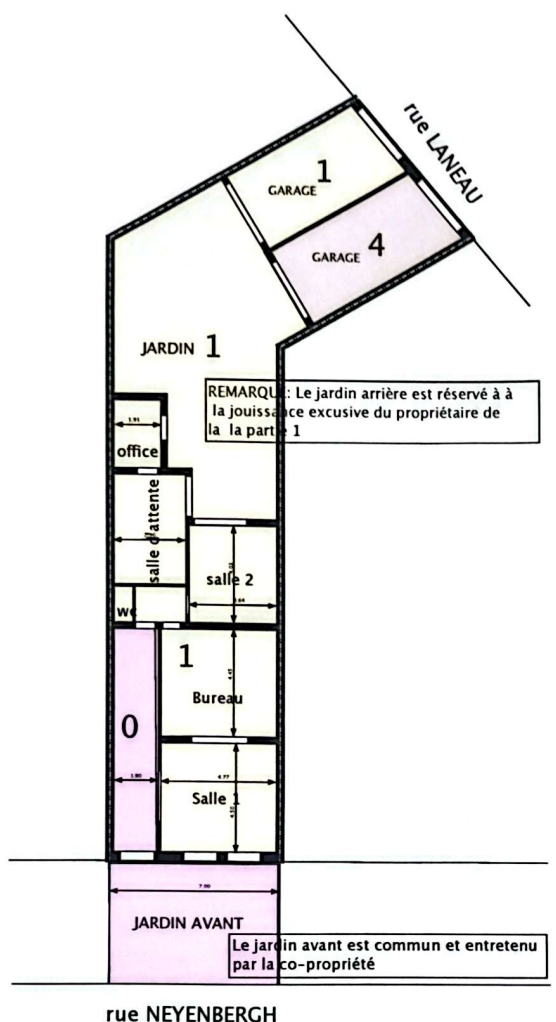


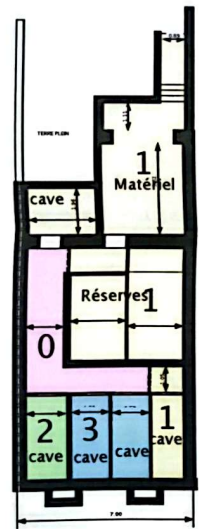
IMMEUBLE SITUÉ A BRUXELLES AVENUE RICHARD NEYBERGH 143		BUREAU D'ARCHITECTURE <b>Quentin G. HOUYOUX</b> inscrit à l'Ordre du Brabant	
DIVISIONS DES ESPACES POUR ACTE DE BASE			
l'architecte		échelle: 0,5 cm p m	date: E 21/2004



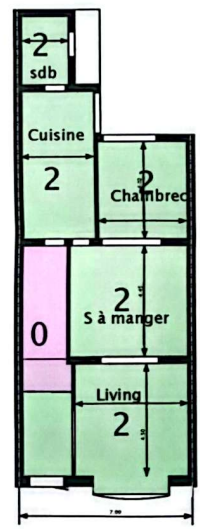
REZ

rue NEYENBERGH

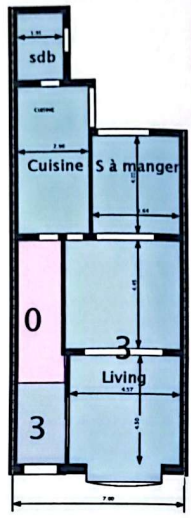
cave



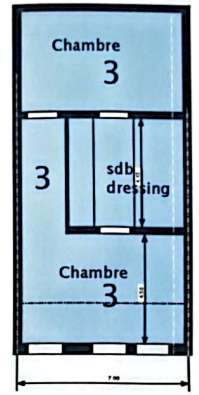
SOUS-SOL



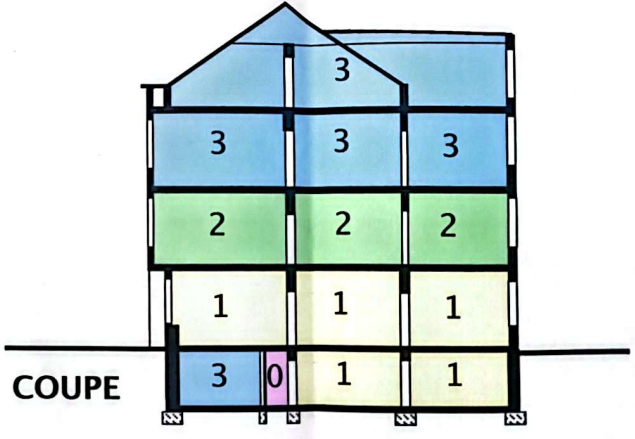
NIV 1



NIV 2



GRENIER



COUPE

0	PARTIES COMMUNES	55,19 m <sup>2</sup>	
1	APPARTEMENT REZ+ CAVES GARAGE	209,11 m <sup>2</sup>	352,4 %
2	APPARTEMENT PREMIER+ CAVE	135,15 m <sup>2</sup>	227,8%
3	DUPLEX DEUXIEME + CAVE	220,87 m <sup>2</sup>	372,2 %
4	GARAGE	28,3 m <sup>2</sup>	47,7%
SURFACE PRIVATIVE TOTALE		593,43 m <sup>2</sup>	1000%